

Cannot see it? [View in a web browser](#)
[Subscribe](#) . [Unsubscribe](#) . [Previous Newsletters](#)



A Monthly Publication of the CGA at Harvard University

FEBRUARY 2016

HIGHLIGHTS

- [2016 CGA Conference: Space, Place, and Geographic Thinking in the Humanities](#)
- Call for Applications:
 - [2016 Fisher Prize and EDC Award](#)
 - [Cartography Workshop Spring 2016](#)
- [Upcoming GIS Technical Training Workshops](#)
- [CGA's Monthly GIS Presentations](#)
- [Esri Demographic and Lifestyle Data 2015 Available](#)
- [NSF REU Fellow Opportunity](#)
- [Special Event at Weatherhead Center - Why Geography Matters](#)
- [Sanborn Maps GeoEdition](#)
- [Hexagon Geospatial App Development Contest](#)
- [Call for Papers: Special Issue "Web/Cloud Based Mapping and Geoinformation"](#)
- [Third Call for Papers - GIScience 2016](#)
- [Esri Free MOOC: Do-It-Yourself Geo Apps](#)
- [Esri Unveils ArcGIS Earth to the World - Free Interactive 3D Globe](#)
- [How the Epidemic of Drug Overdose Deaths Ripples Across America](#)
- [Surging Seas Interactive Sea Level Rise Forecast Map](#)
- [More...](#)

CGA NEWS

Call for Registration - 2016 CGA Conference: Space, Place, and Geographic Thinking in the Humanities

This year's CGA conference is aimed at bringing humanists together with geospatial technologists and theorists, reviewing current status, achievements, lessons learned, unmet needs, challenges, potentials and perspectives of applying geographic analysis in the humanities. Invited speakers will present their on-going explorations, inspiring cases, and expert views across a range of domains and disciplines, and engage with each other and the audience in discussion and debate. Open to public. CGIS South Concourse level, 1730 Cambridge St., Cambridge, MA. The conference [preliminary program](#) is available online. To register, please click [here](#).

Call for Applications:

- **2016 Fisher Prize and EDC Award** Submissions are now being accepted for two Harvard student awards for GIS excellence. Click the links below for more information and to apply: [Fisher Prize](#) | [ESRI Development Center Student of the Year](#).
- **Cartography Workshop Spring 2016**
This full-day hands-on workshop focuses on the visual representation of geographic information. Cartographic fundamentals will also be introduced. **May 4th, 2016**. Room B129, Northwest Building. More information about this workshop can be found [here](#).

Upcoming GIS Technical Training Workshops

CGA offers several non-credit technical training workshops related to GIS (Free to Harvard affiliates but registration is required). The workshops are:

- **Making Sense out of Spatial Data-Cambridge**, by Wendy Guan, 1:00-3:00pm, February 12th, 2016
- **Three-Dimensional GIS**, by Paul Cote, 1:00-3:00pm, February 17th, 2016
- **Worldmap Training**, by Ben Lewis, 1:00-3:00pm, February 19th, 2016
- **Open Source QGIS 2.0**, by Merrick Lex Berman, 1:00-3:00pm, February 26th, 2016
- **ArcGIS Online & Esri Maps for MS Office**, by Giovanni Zambotti, 1:00-3:00pm, March 4th, 2016
- **Exploring Google's Mapping Products**, by Jeff Blossom, 1:00-3:00pm, March 11th, 2016
- More information about technical training workshops and registrations can be found [here](#).

CGA's Monthly GIS Presentations-come join the discussion

- [ABCD-GIS Presentation Series](#)
"Drone Mapping On the Cheap", presented by Faine Greenwood, research assistant at the Signal Program at the Harvard Humanitarian Initiative. **February 25th, 2016, 12:00-1:30pm**. Room S030, CGIS South Building, 1730 Cambridge St, Cambridge, MA.
- [GIS Colloquium](#)
"A Decision Support System for Monitoring, Reporting and Forecasting Ecological Conditions of the Appalachian National Scenic Trail ", presented by Yeqiao (Y.Q.) Wang, professor at the Department of Natural Resources Science, University of Rhode Island. **March 3rd, 2016, 12:00-1:00pm**. Room K401, CGIS Knafel Building, 1737 Cambridge St, Cambridge, MA.



Esri Demographic and Lifestyle Data 2015 Available (For Harvard Affiliates Only)

Esri Data 2015 is now available in the HMDC computer lab. It contains Esri 2015-2020 updated demographic data, Esri 2015 consumer spending, Esri 2015 Tapestry data, 2009-2013 American community survey data, and 2010 census data. [Read more](#).

NSF REU Fellow Opportunity

The NSF Spatiotemporal Innovation Center is looking for six undergraduate research assistants to serve as NSF REU Summer Fellows in 2016. The Student interns will work in a team with graduate students, postdocs, and faculty at one of the three center sites (George Mason University, Harvard University, and University of California, Santa Barbara) and will conduct research related to spatiotemporal issues. The application deadline is February 29, 2016. [For more information and apply](#)

HARVARD GIS COMMUNITY NEWS

Special Event at Weatherhead Center - Why Geography Matters

Have you ever wondered why there is geospatial analysis at Harvard and yet you can't seem to find many geography classes on campus? Have you wondered why Americans don't study much geography? This panel will explore why geography matters, to scholarship and intellectual debates, in politics, policy-making, culture, history, humanities, and higher education. Come to learn the history of what happened to geography at Harvard, current initiatives on campus and in the discipline more broadly. Panelists will discuss why and how geography matters, now more than ever.

February 11, 2016 - 3:30pm to 5:00pm. Belfer Case Study Room (S020), CGIS South Building, 1730 Cambridge Street, Cambridge, MA. [Read more](#)



Sanborn Maps GeoEdition

The Harvard Library has set up a trial of the Sanborn Maps Geo Edition (1867-1970) from Proquest, available [here](#). You will have to provide your HarvardKey/PIN to access the service. This product provides digital access to thousands of large-scale maps of American towns and cities, searchable by address and GPS coordinates. The images are georeferenced and can be downloaded as GeoTiffs. This is a selected subset of the Sanborn Digital Maps product that is already available from a library subscription. The trial runs until March 31, 2016.

CONFERENCES, CALLS, EVENTS & EMPLOYMENT

Hexagon Geospatial App Development Contest

This competition is to create an innovative Hexagon Smart M.App that will solve real world issues in a smart, fresh way. You are invited to plan and build a dynamic information experience that provides an elegant solution to a mainstream, global issue. [Read more.](#)



Call for Papers: Special Issue "Web/Cloud Based Mapping and Geoinformation"

You are invited to consider the submission of original and scientific research for this Special Issue (Web/cloud based mapping and geoinformation) of the ISPRS International Journal of Geo-information. The challenge is how to discover, integrate, manipulate and present this



geoinformation at the appropriate level to users/applications in an environment that comprises GIS, mobile mapping, digital virtual globes, volunteered geographic information, sensor networks, etc. [Read more.](#)

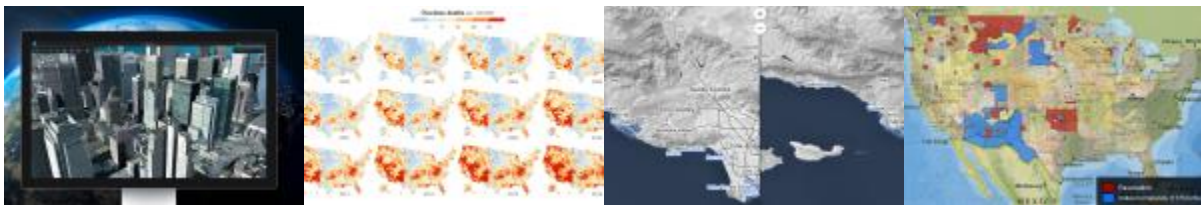
Third Call for Papers - GIScience 2016

GIScience 2016 continues a highly successful series of conferences started in 2000 that regularly brings together approximately 300 international participants from academia, industry, and government organizations to discuss and advance the state-of-the-art in Geographic Information Science. The conference consists of two refereed paper tracks: full papers and extended abstracts. [Read more.](#)

Esri Free MOOC: Do-It-Yourself Geo Apps

This course will show you how to combine location and narrative in one application to better communicate and broadcast your story, create custom web applications that solve problems in your community, and build powerful native applications for iOS and Android devices without touching a piece of code. [Read more.](#)

NEWS ON GIS RESEARCH AND SERVICES



[Esri Unveils ArcGIS Earth to the World - Free Interactive 3D Globe](#)

[How the Epidemic of Drug Overdose Deaths Ripples Across America](#)

[Surging Seas Interactive Sea Level Rise Forecast Map](#)

[The Invasion of America](#)

[Overpass turbo-web based data mining tool for OpenStreetMap](#)

The CGA Newsletter is published monthly. Editors of this issue are Fei Carnes and Jeff Blossom.

[CGA Home Page](#) . [Contact us](#) . Follow us on [Twitter](#)