

# **Growing Trust and Transparency in Communities Where Predictive Algorithms are Deployed**

**Amen Ra Mashariki, Ph.D.,  
Urban Analytics Practice Lead, Esri  
Fellow, Harvard Kennedy School**

## Current State of Affairs

- **Cities are aggressively deploying analytics teams or solutions to improve the lives of residents.**
- **Universities are growing their data science programs, as well as their urban analytics research focus such that personnel capability in this area is growing rapidly.**
- **Urban centers are growing and shifting at such a rapid pace that there is a race to provide strong analytics solutions to Cities via, private sector, academia, non-profits and others.**
- **Citizens and activist groups are becoming more and more interested in how their government is using data on their behalf and how they are communicating the decisions they make with the data they have. (Data 4 Black Lives , Data & Civil Rights, [mappingpoliceviolence.org](http://mappingpoliceviolence.org))**
- **Police departments across cities internationally are aggressively deploying predictive policing technology**

# Baltimore Mayor Crime Prevention Press Availability

- What to Deploy ?
- Where to Deploy?

TECHNOLOGY

# Facial Recognition Is Accurate, if You're a White Guy

The New York Times

By STEVE LOHR FEB. 9, 2018

# HOW CODERS ARE FIGHTING BIAS IN FACIAL RECOGNITION SOFTWARE

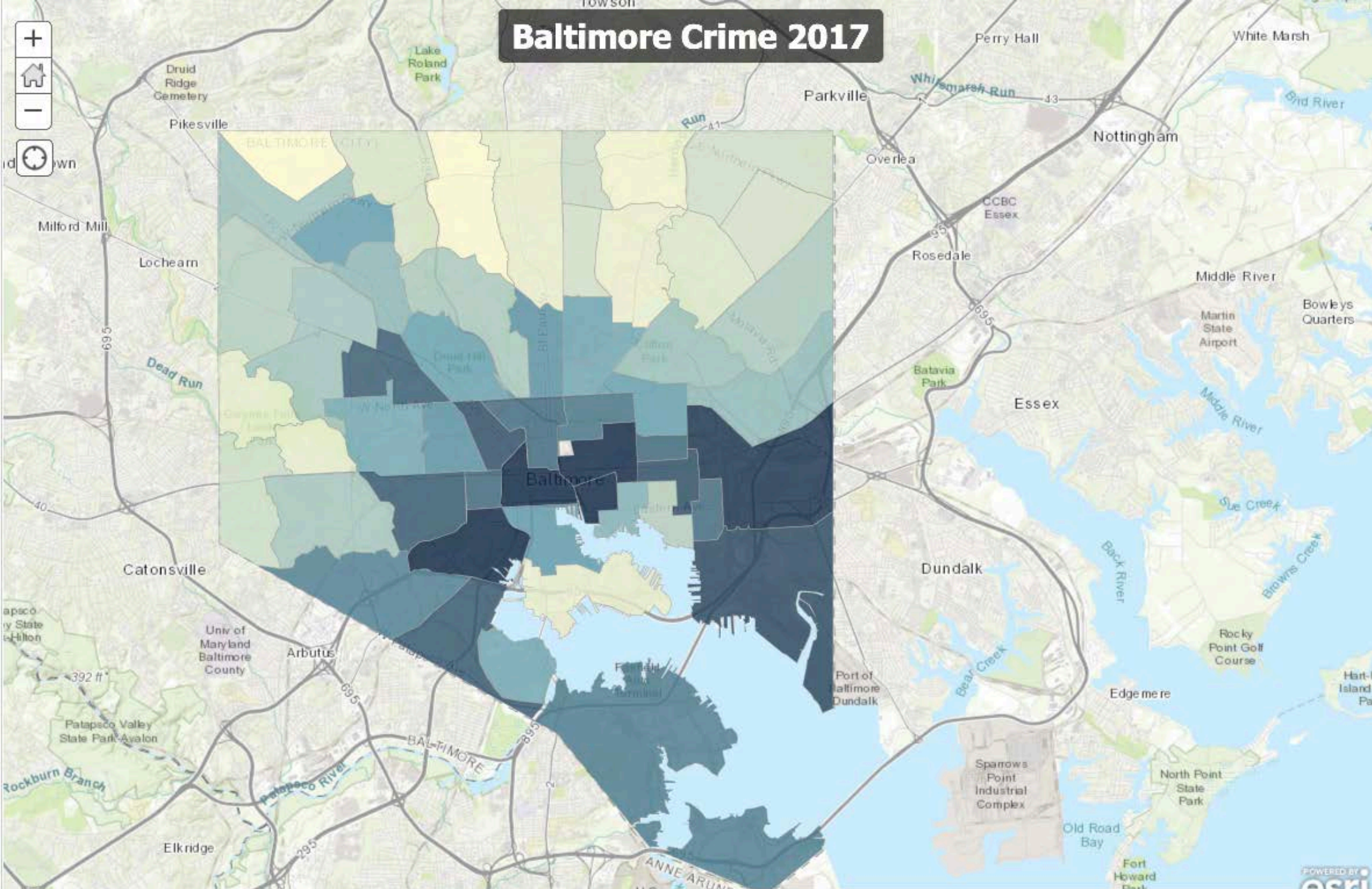


## Facial recognition software is biased towards white men, researcher finds

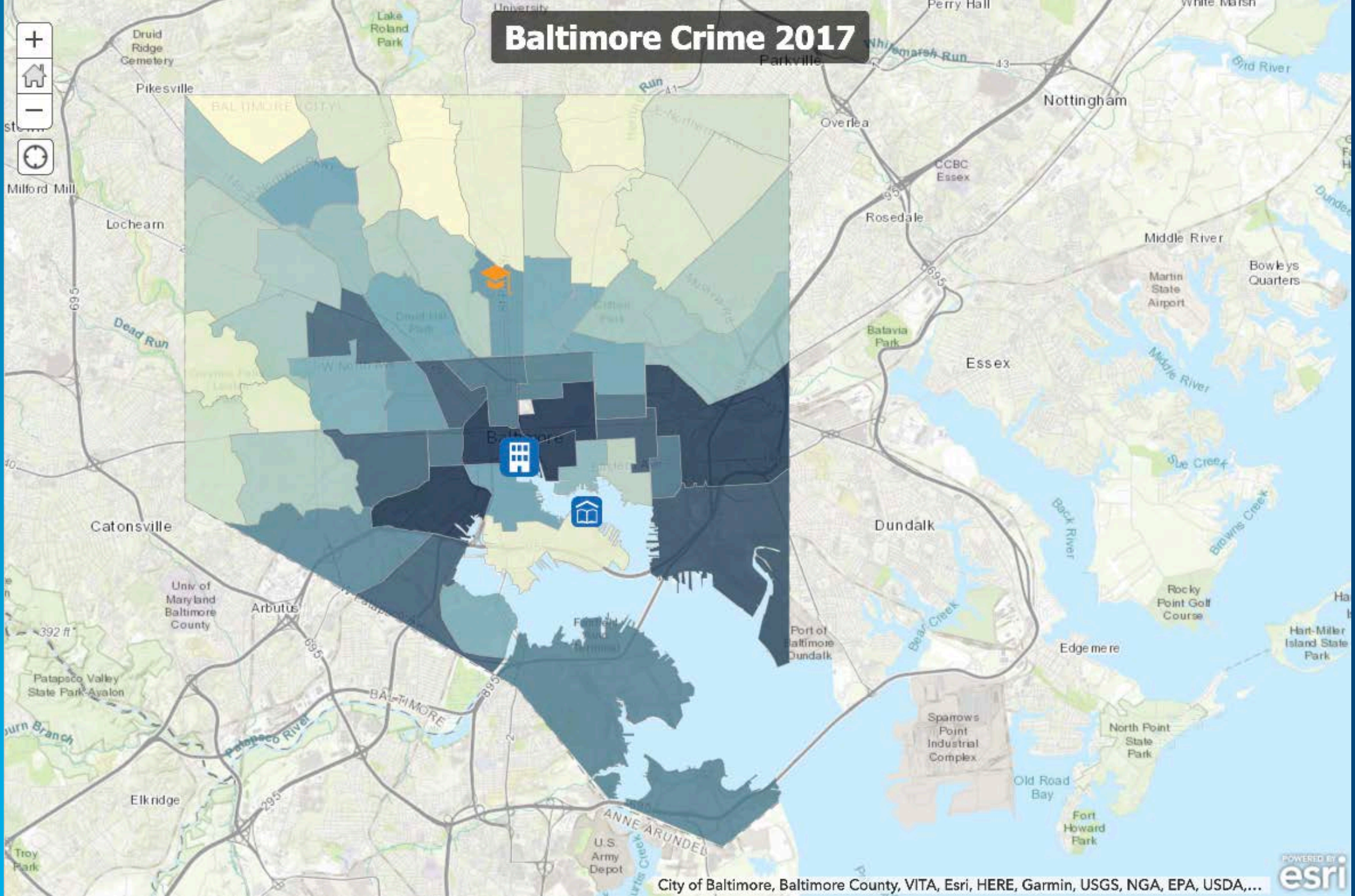
*Biases are seeping into software*

**THE VERGE**

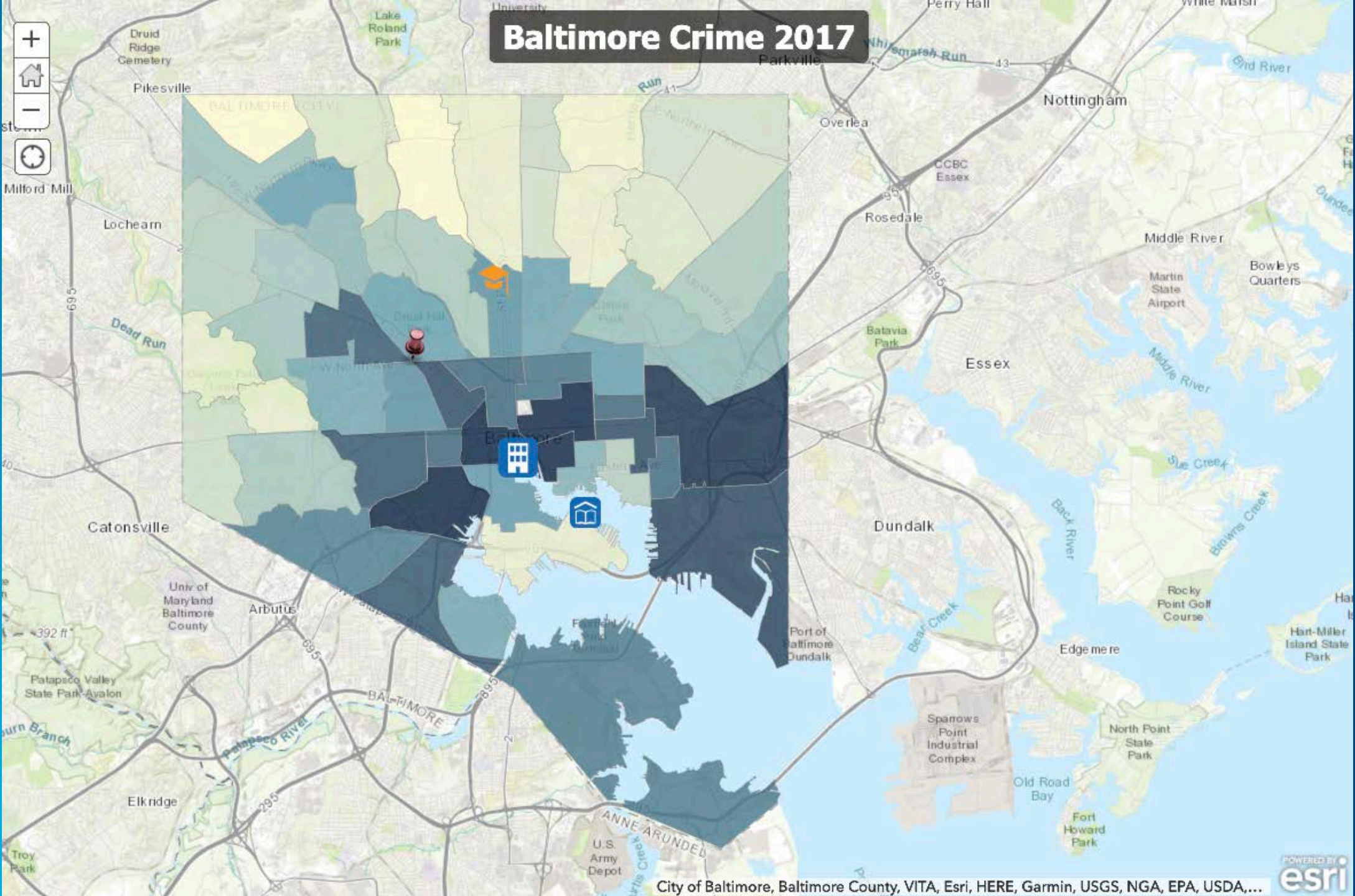
# Baltimore Crime 2017



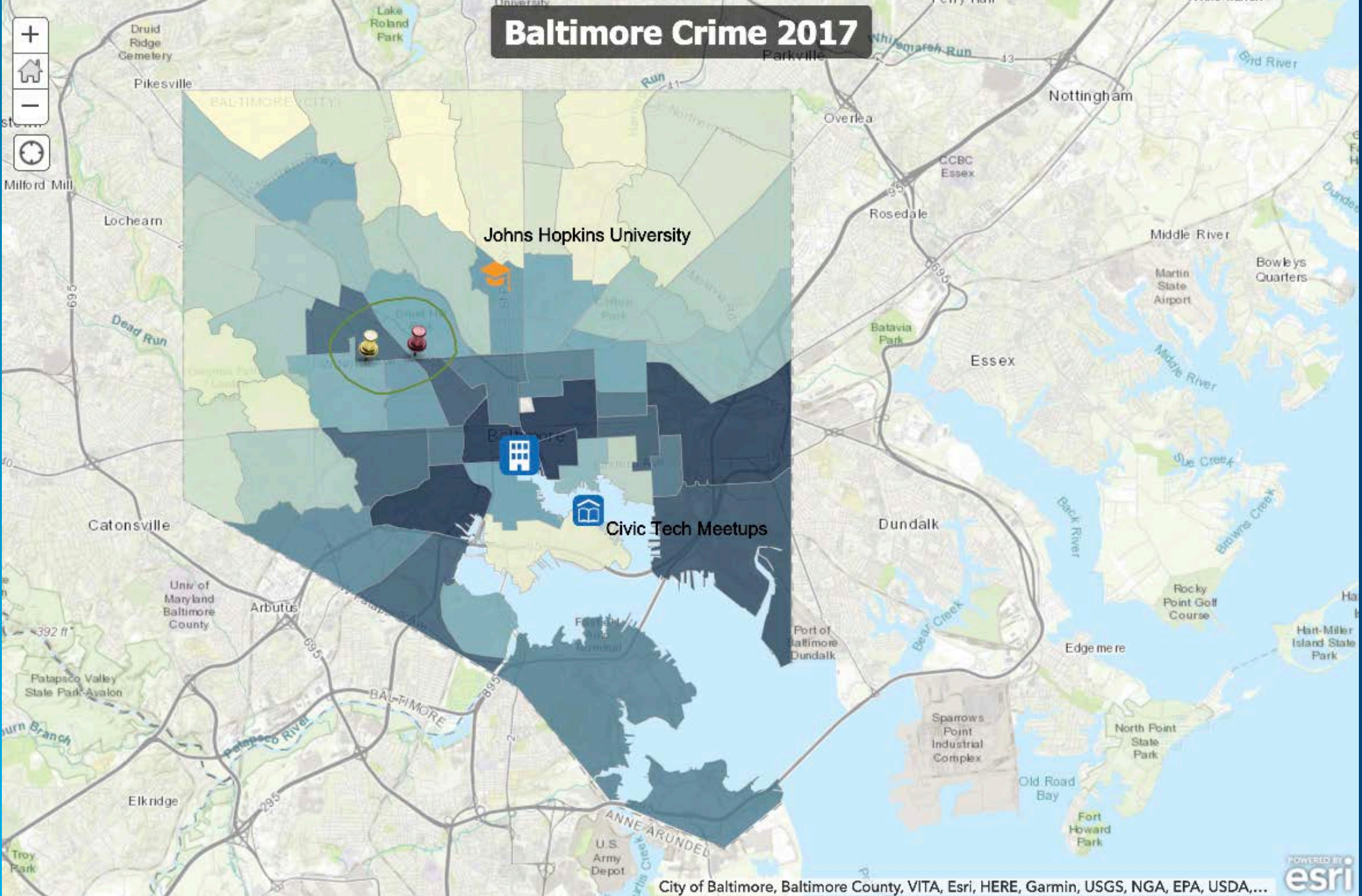
# Baltimore Crime 2017



# Baltimore Crime 2017



# Baltimore Crime 2017





# Algorithm Deployment and Transparency Campaign

- Identify a Use case that will drive value within the City of Baltimore
- Identify the analytics question that will need to be solved.
- Define the creators, users, and recipients of the solution algorithm to the analytics question.
- Identify all data sources that will and can be used by the algorithm.
- Show whom the “algorithm” impacts, how it will impact them (short and long term), how they can contribute to the development (ideation), input on how and where it will be deployed, and
- Build and deploy the “algorithm”.
- Translate into “community speak”, what the algorithm does and the data sources that are being used.
- Provide visibility into tracking the outcomes of the deployed analytics algorithm.
- Maintain a capability for community feedback.
- Provide ability to iterate on this process in a continuous fashion.