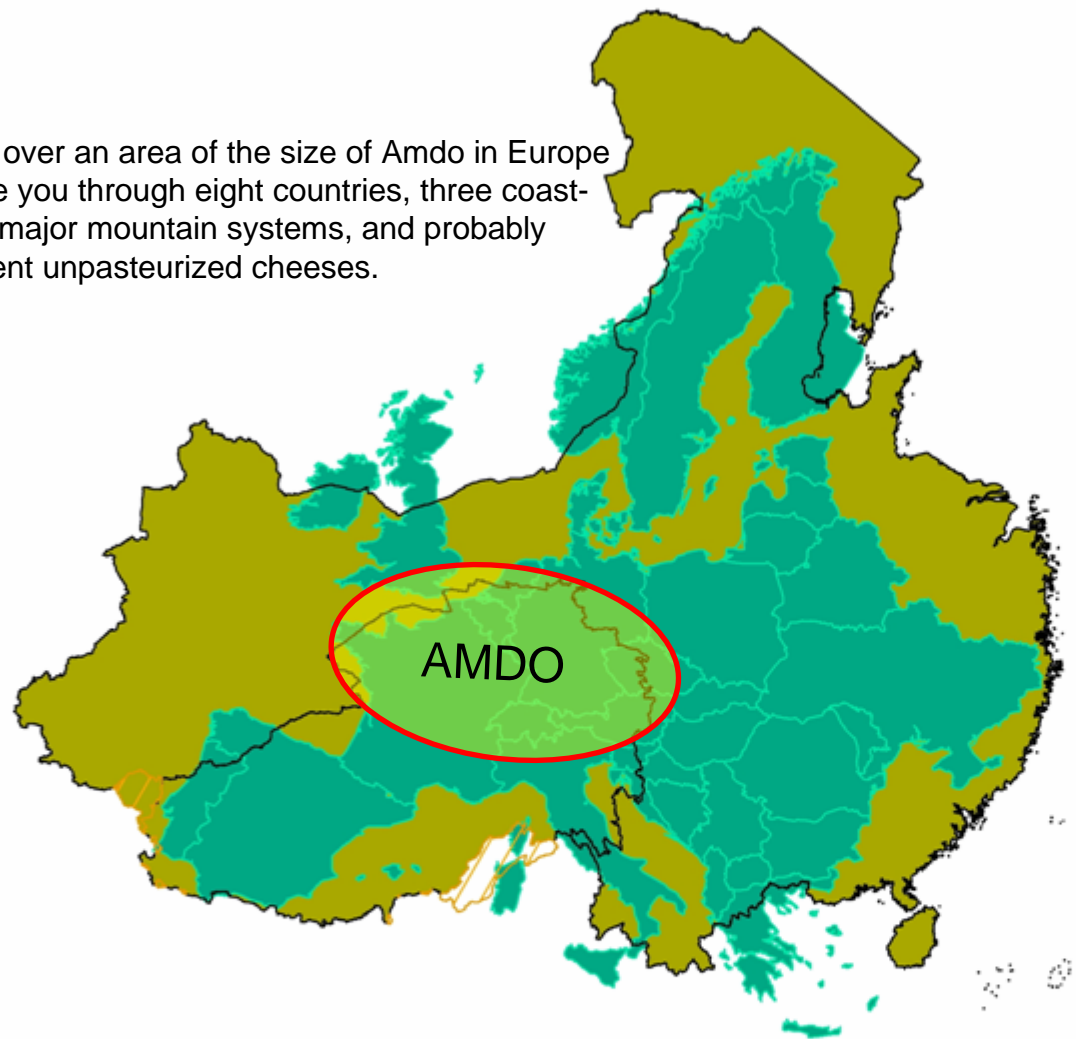


Gray Tuttle, Columbia University

# **NETWORK ANALYSIS OF TIBETAN BUDDHIST MONASTERIES AND LEADERS**



Travelling over an area of the size of Amdo in Europe would take you through eight countries, three coast-lines, two major mountain systems, and probably 800 different unpasteurized cheeses.



**Europe & China overlaid with the same scale**

 contested territories



WESTERN EUROPE FITS ALMOST ENTIRELY WITHIN THE VARIOUS TIBETAN POLITICAL AUTONOMOUS UNITS AS RECOGNIZED BY THE PEOPLE'S REPUBLIC OF CHINA.

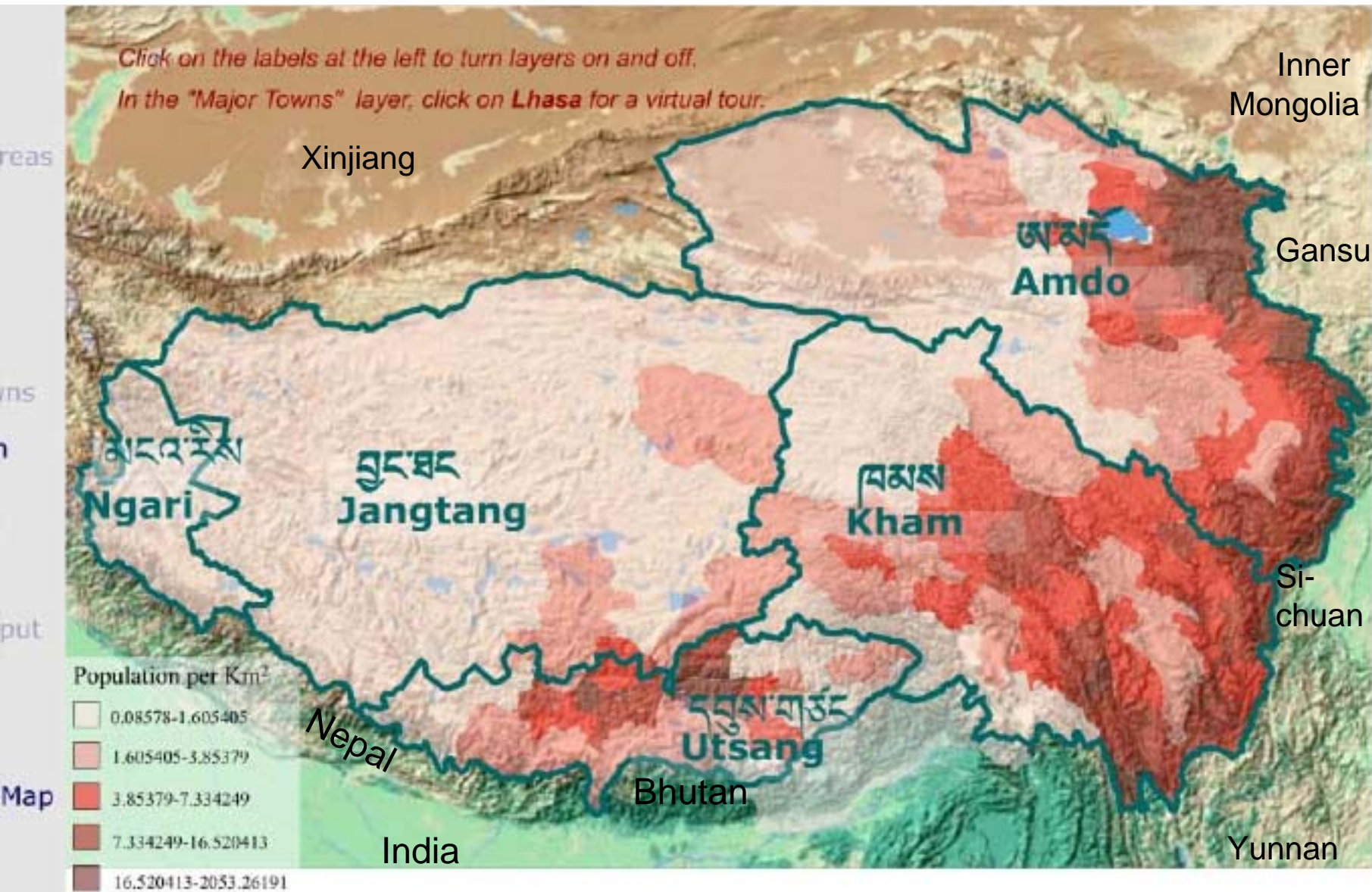
AMDO IS IN NORTHEASTERN TIBET PLATEAU, JUST WEST OF CENTRAL CHINA IN THIS IMAGE.

MAP BY QUENTIN DEVERS OF THE TIBETAN AND HIMALAYAN LIBRARY (THL)



# Tibetan Cultural Regions, with Population Density

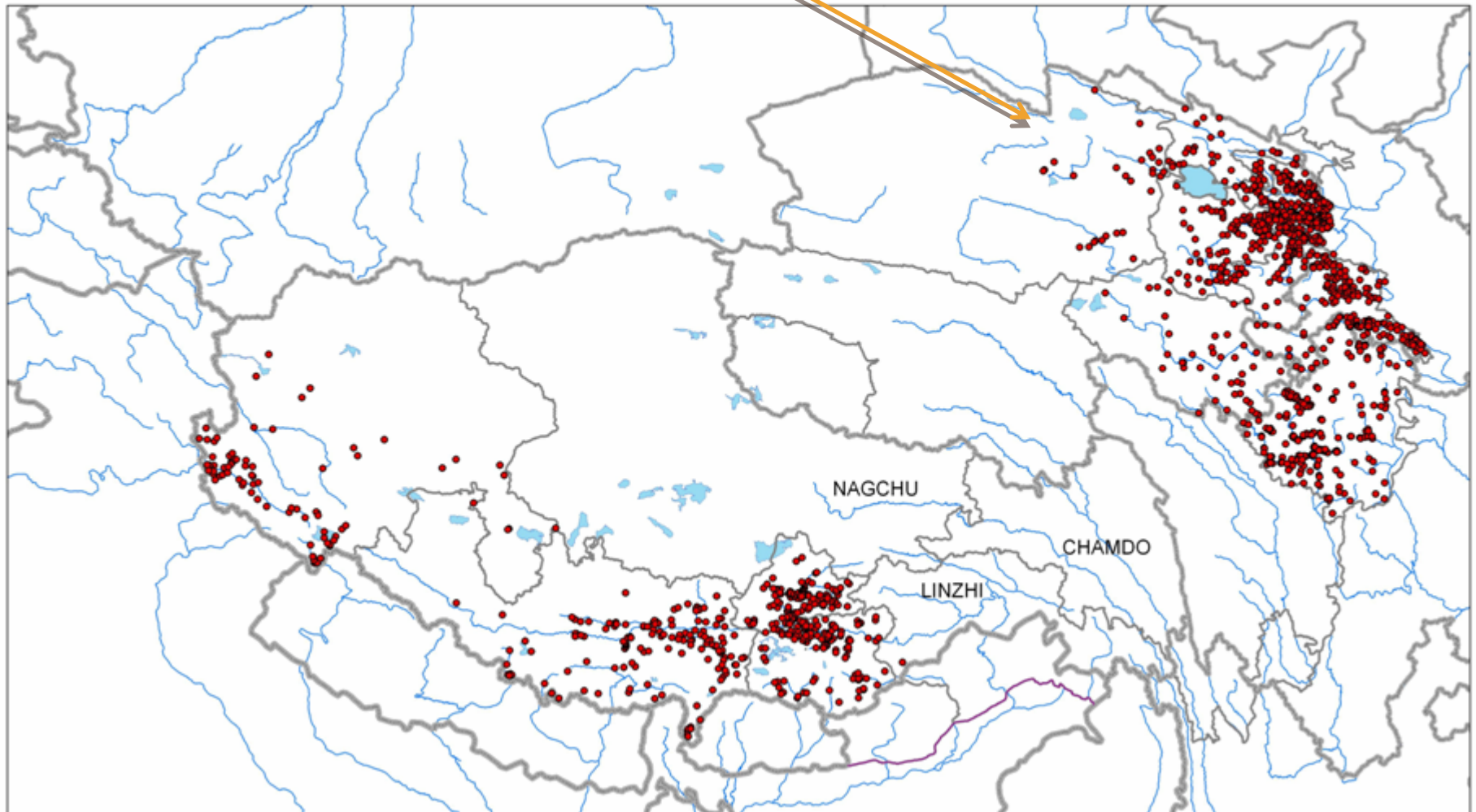
(Compare Amdo with Central Tibet, labeled Utsang here) Source: Tibetan & Himalayan Library



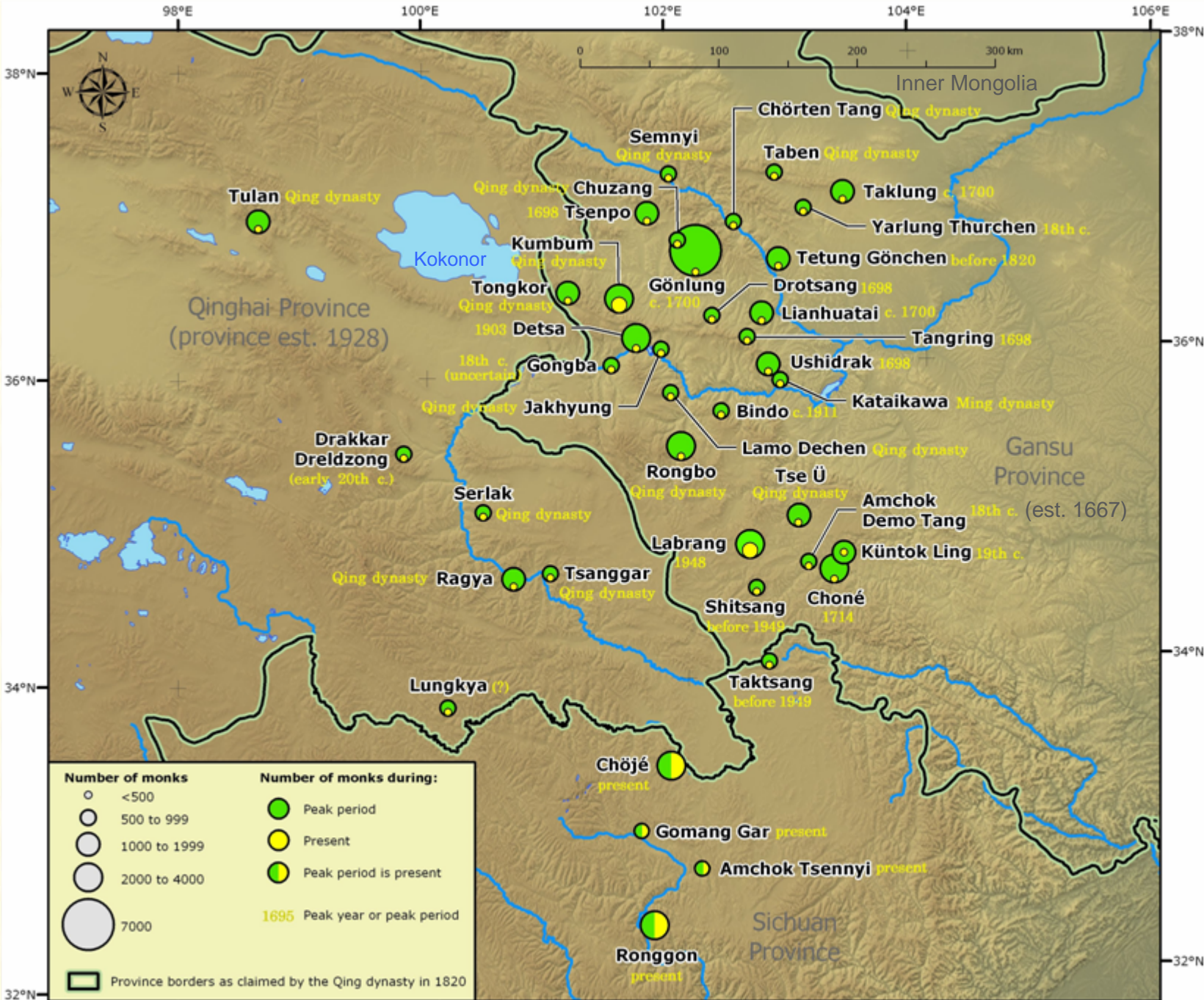
# AMDO MONASTERIES (IN NORTHEAST TIBET)

MAP BY KARL RYAVEC

Himlayan Temples/Monasteries - GIS database status Feb. 2010





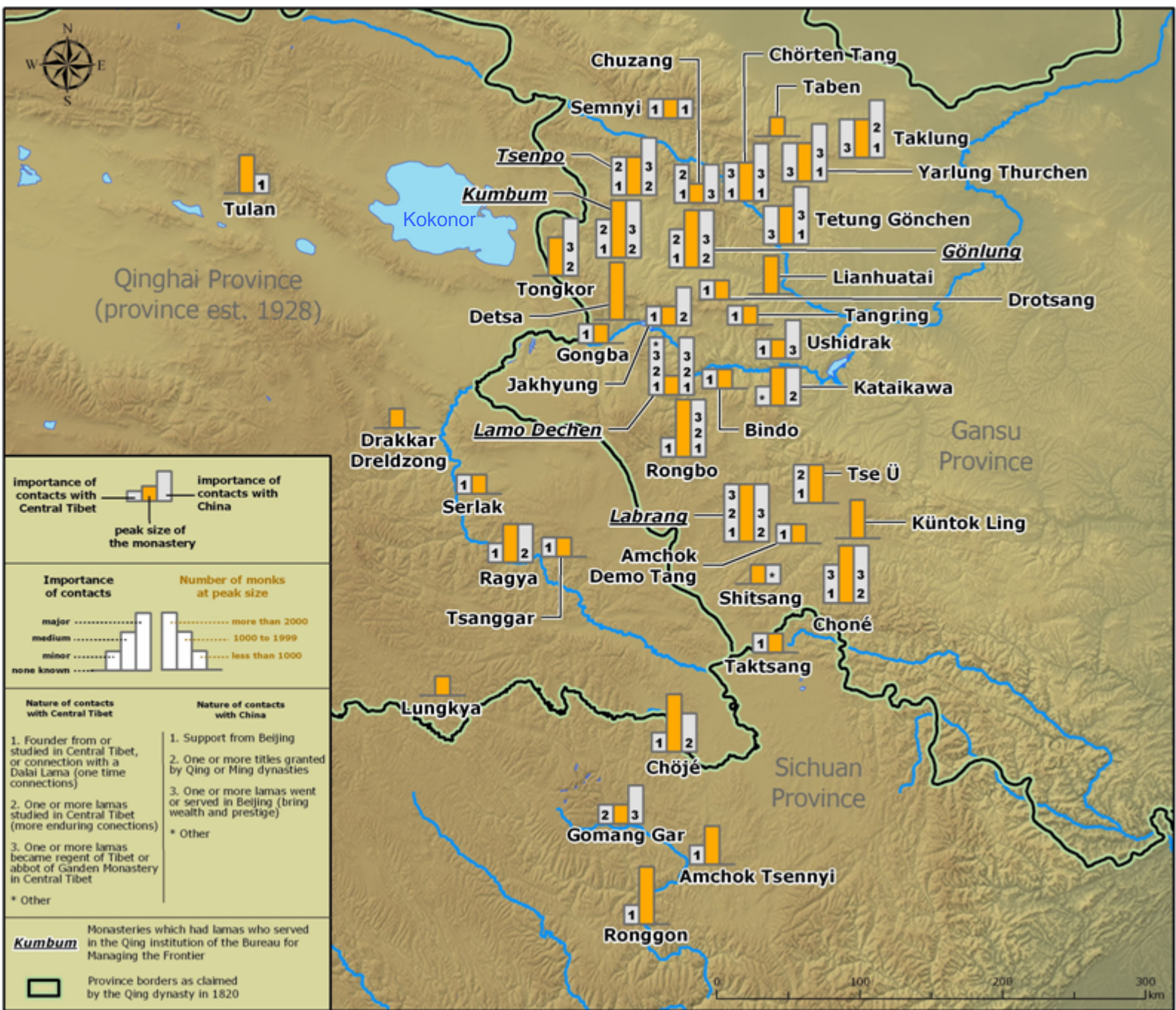


MASS  
MONASTIC  
CENTERS  
IN AMDO  
(ALL PEAK  
GROWTH  
RECORDED  
IN LATE  
17<sup>TH</sup> C. OR  
LATER)

MAP BY  
QUENTIN  
DEVERS



# CONTACTS BETWEEN AMDO, BEIJING & CENTRAL TIBET



MAP BY  
QUENTIN  
DEVERS