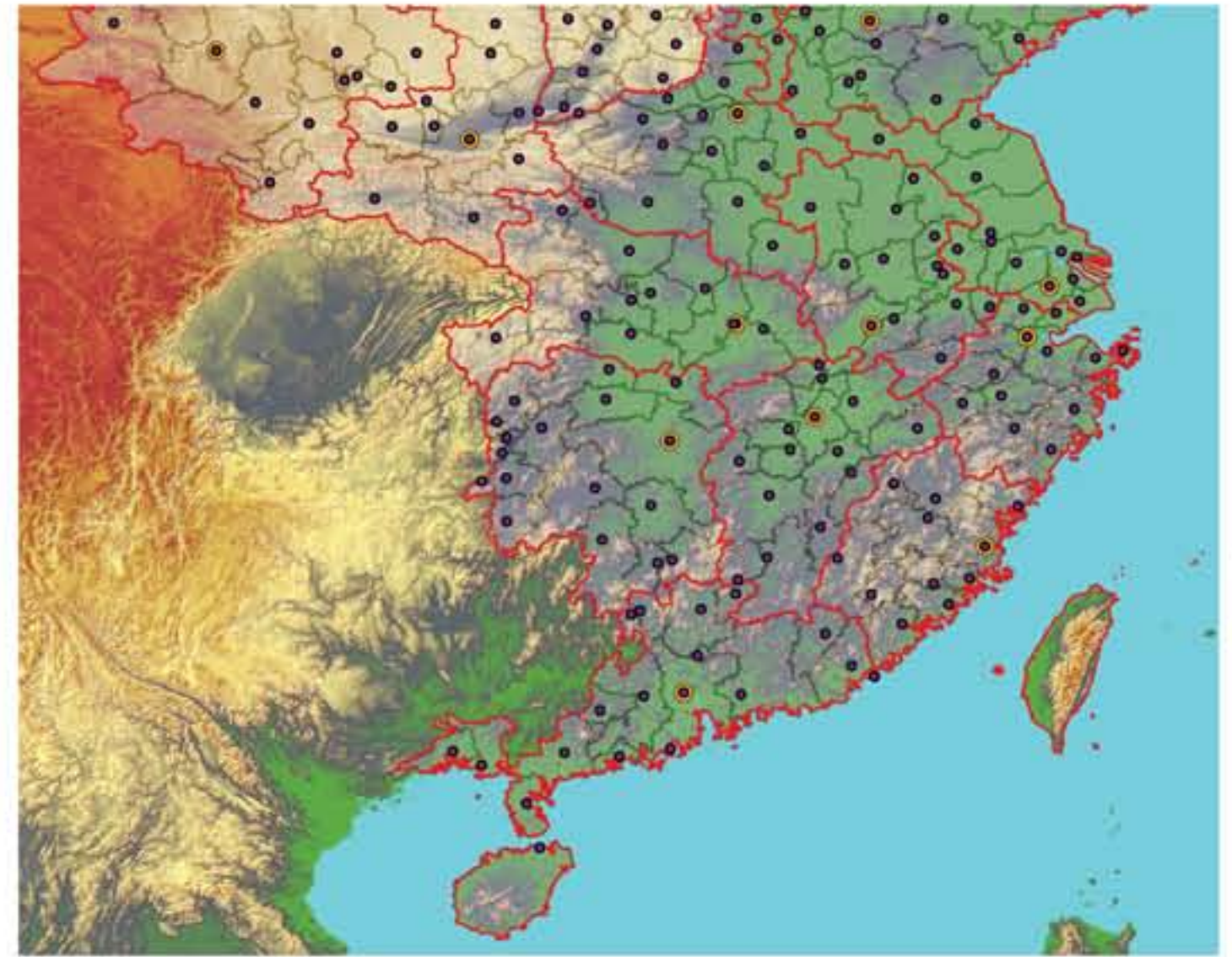


CHINA HISTORICAL GIS

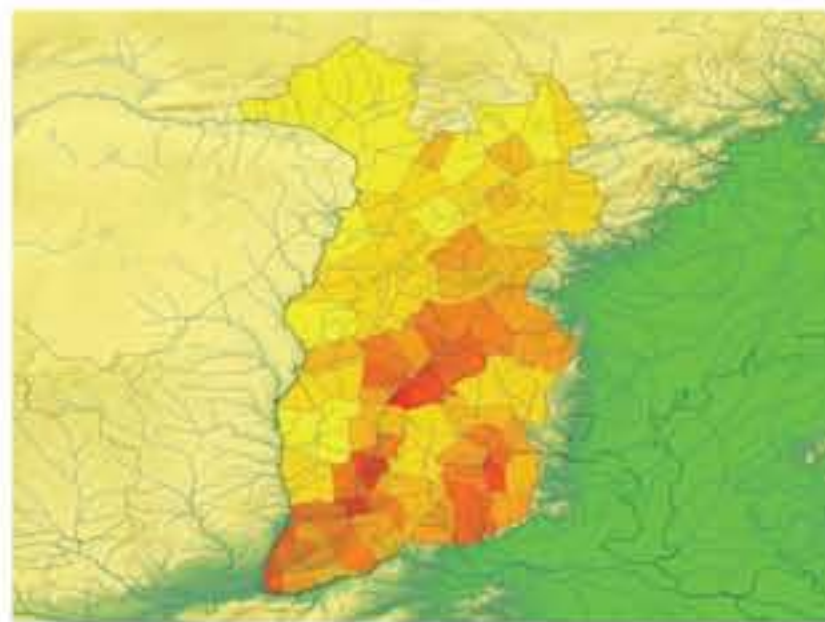
GIS datasets of historical administrative units from 222 BCE to 1911 CE



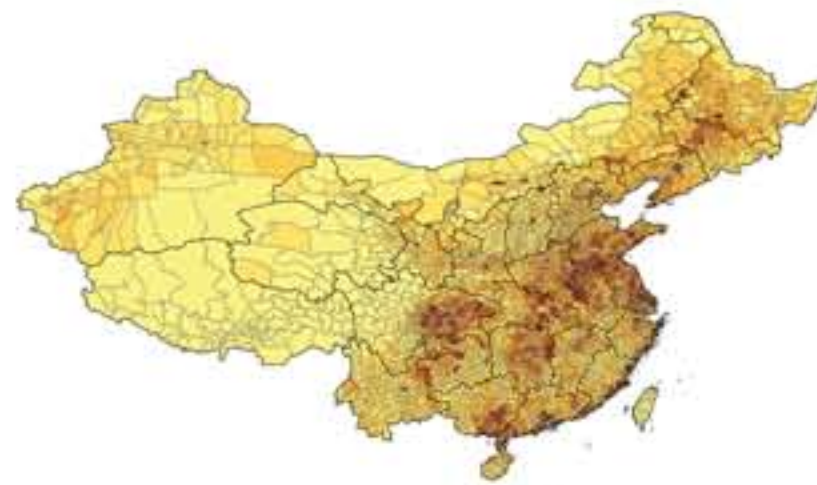
overlayed with historical maps



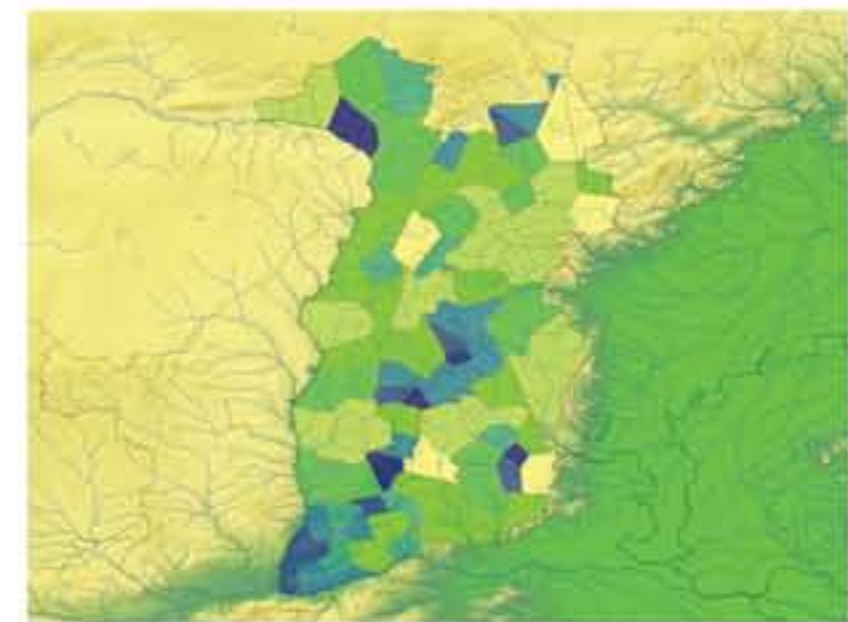
overlayed with remote sensing images



1820 population figures

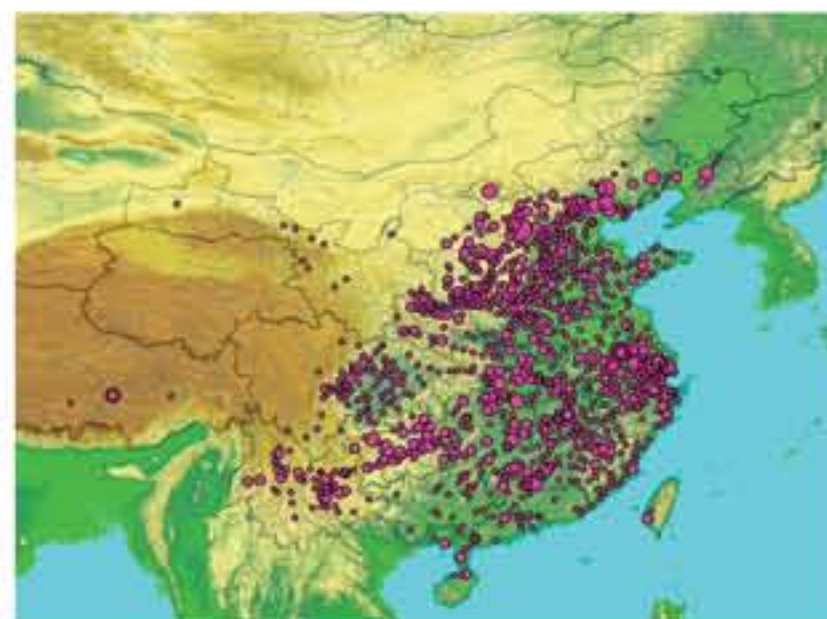


1990 population



1820 grain tax figures

Buddhist
Temples
circa 1820



Mongolian
Administration
1683 to 1911 CE



Harvard Yenching Institute
Fudan University, Center for Historical Geography
Griffith University, ACASIAN
Editors: Peter K. Bol, Jianxiang Ge 主编: 葛剑雄, 包安澜
Executive Editors: Merrick Lee Berman, Zhimin Man 执行主编: 贝明德, 贝明远
Project Funding: Henry Luce Foundation



Harvard Yenching Institute
Fudan University, Center for Historical Geography
Griffith University, GAPRI
Editors: Peter K. Bol, Jianxiang Ge 主编: 葛剑雄, 包安澜
Executive Editors: Merrick Lee Berman, Zhimin Man 执行主编: 贝明德, 贝明远
Project Funding: Henry Luce Foundation



Harvard Yenching Institute
Fudan University, Center for Historical Geography
Editors: Peter K. Bol, Jianxiang Ge 主编: 葛剑雄, 包安澜
Executive Editors: Merrick Lee Berman, Zhimin Man 执行主编: 贝明德, 贝明远
Project Funding: The Henry Luce Foundation, The National Endowment for the Humanities, Harvard Yenching Institute, Harvard Asia Center

free downloads of 40 data layers for all academic researchers

www.fas.harvard.edu/~chgis