

The Open spaces in Nanjing, 1900s-2000s



Zhen Xu

xuzhen@njfu.edu.cn

Visiting scholar of CGA, Harvard University

Associate professor of Landscape Architecture
Nanjing Forestry University, China

questions

- what changes happened ?
- the social background ?
- the potential consequence ?

research areas

open space

park

plaza & square

water

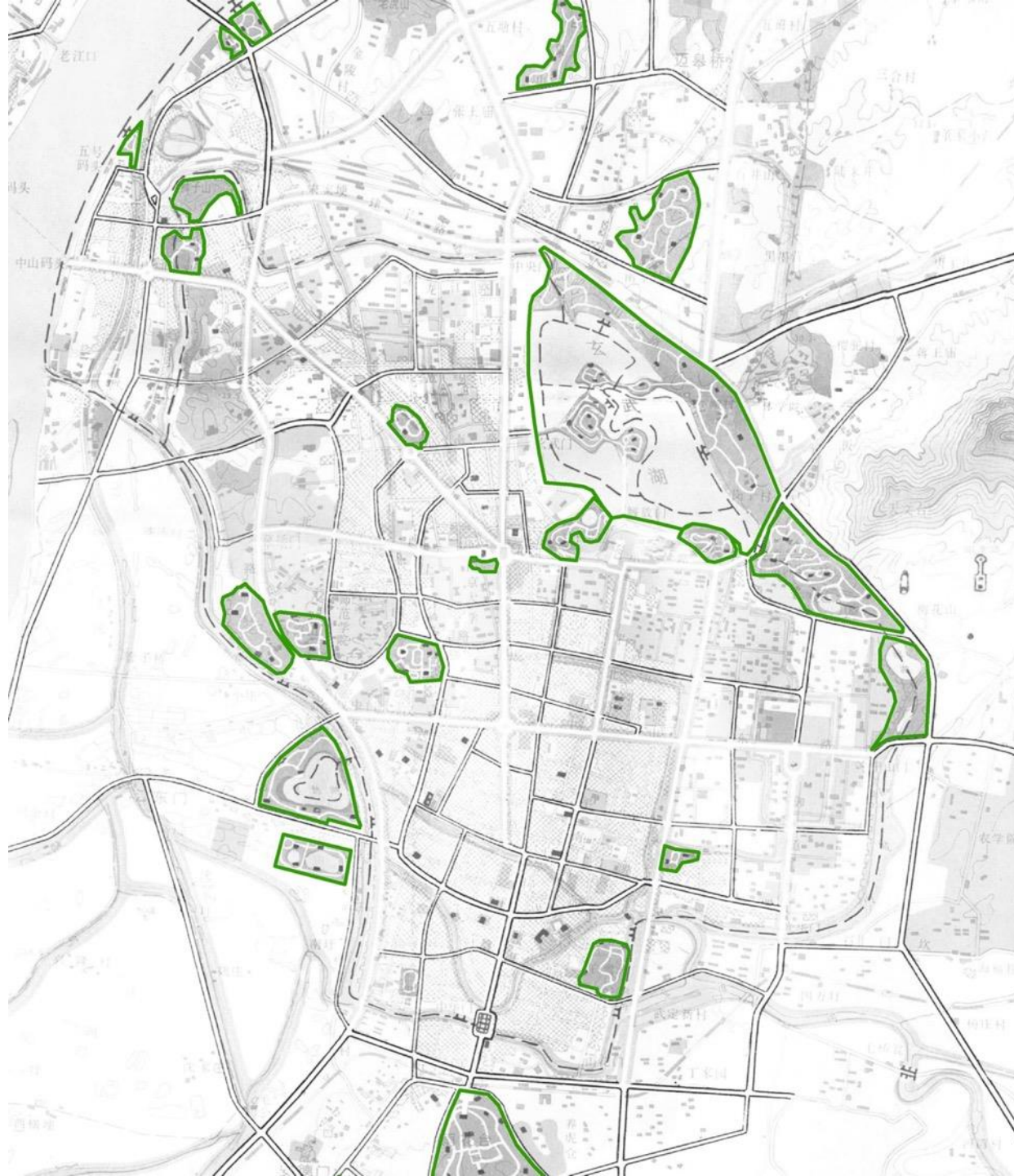
Approach

- Geo-reference
- Field work
- Archives review



Approach

- Geo-reference
- Field work
- Archives review



Nanjing

Eastern Central China



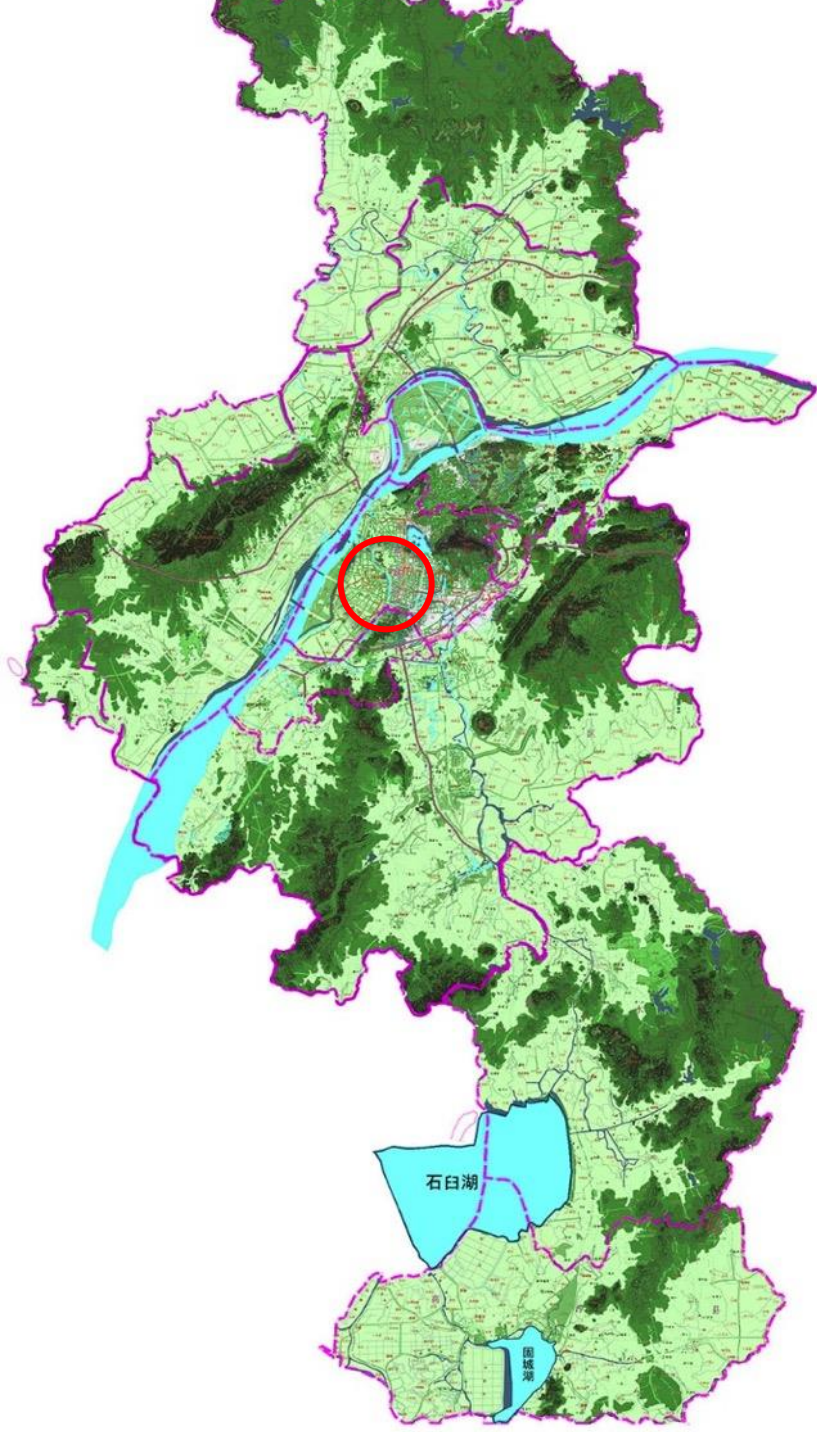
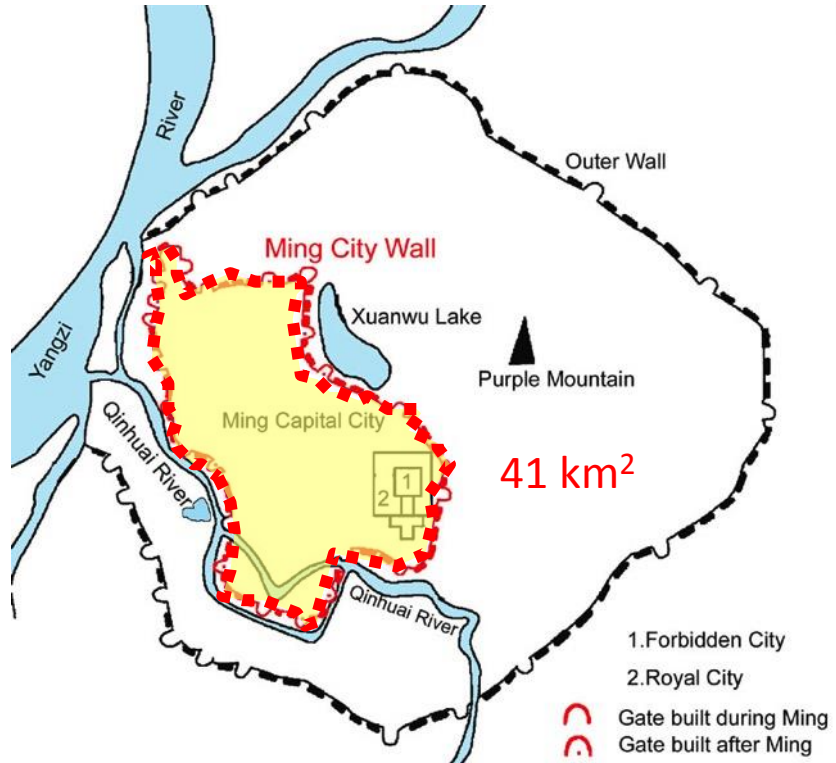
City Profile

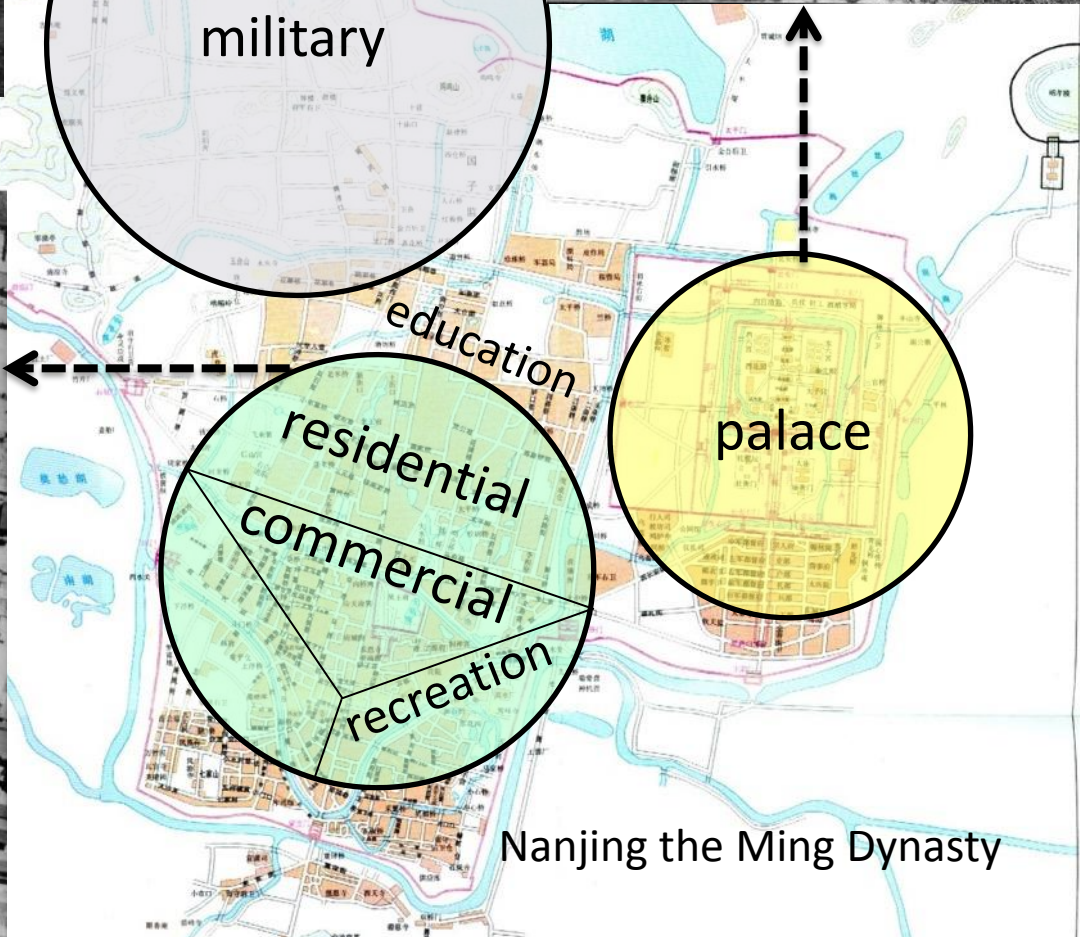
2500 years history

450 years capital

Popu:8,160,000

Area: 6582 km²





military

education

residential
commercial
recreation

palace

Nanjing the Ming Dynasty

1900s-----1912-----1937-----1949-----1979-----2000

Late feudal society

Yang-wu Campaign (learning western, top-down)



曾国藩
1811-1872



张之洞
1837-1909



左宗棠
1812-1885



李鸿章
1823-1901



端方
1861-1911



Hsia-Kuan (The Wharf On River Bank) 頭嗎關下

Xiaguan port, 1900

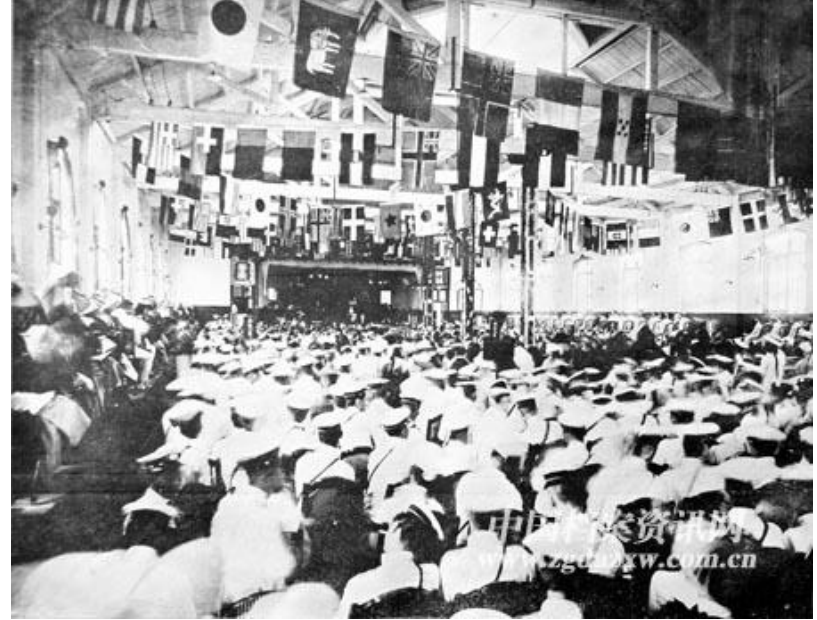


Nanking Station. 場車停京南

Nanjing Station, 1905

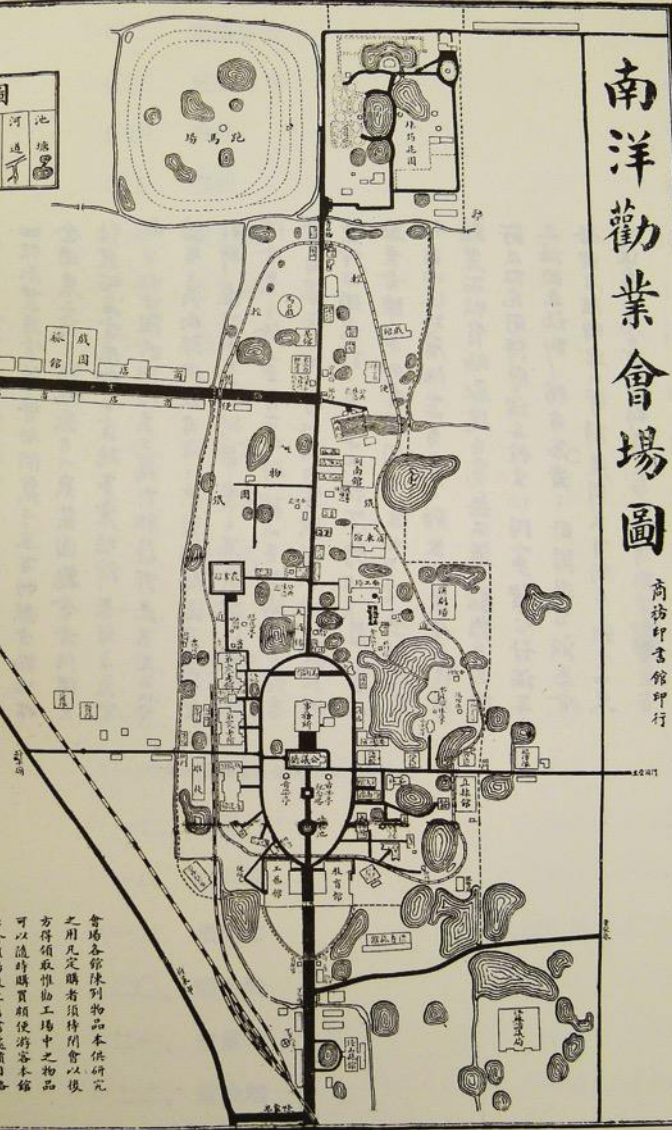


Ku Uou (Drum Tower) 樓鼓
first asphalt road in Nanjing, 1894



Nan-yang Exposition, 1910
南洋劝业会

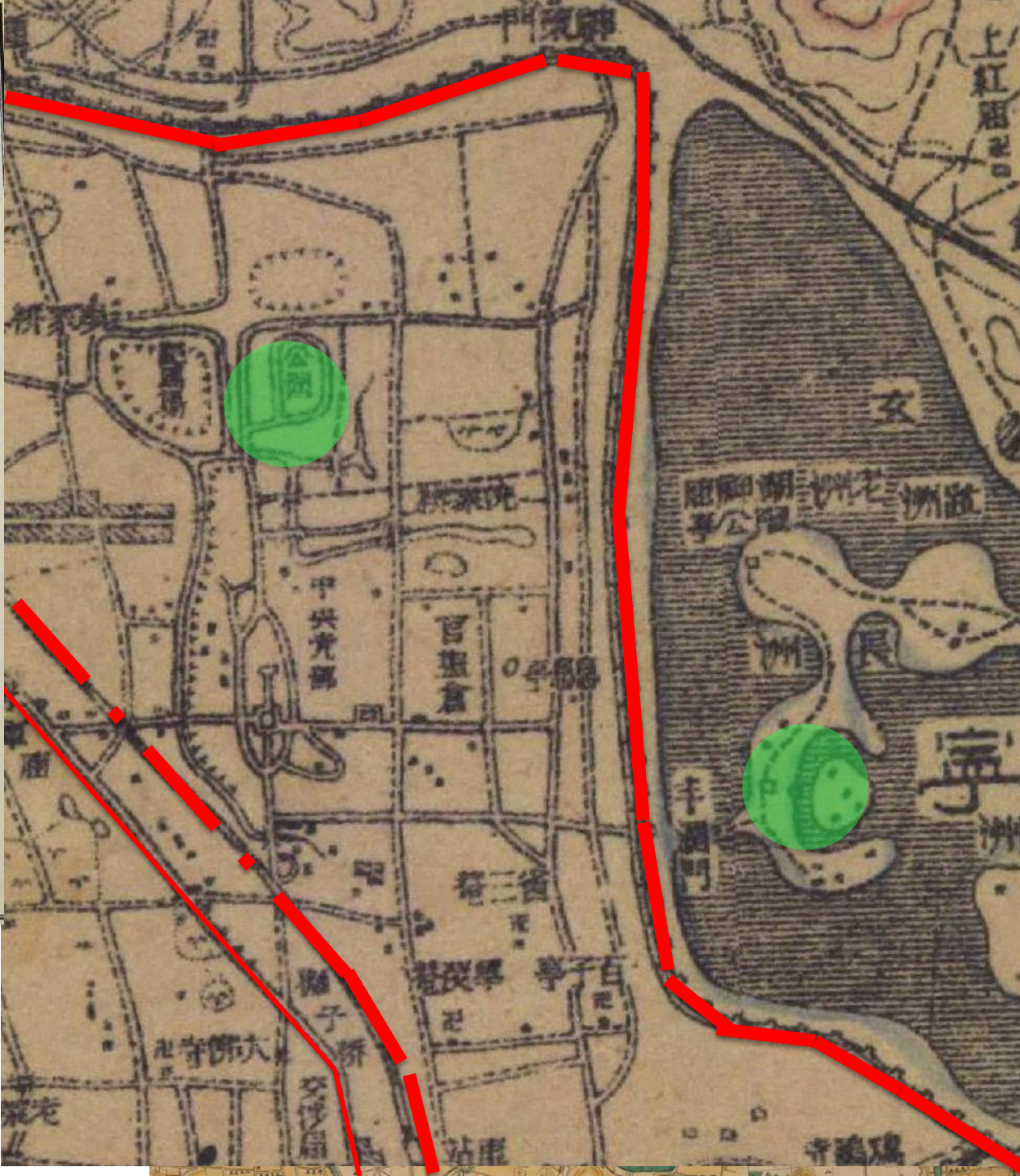




南洋勸業會場圖

商務印書館印行

會場各館陳列物品本館研究
之用凡定購者須待開會以後
方得領取惟助工場中之物品
可以隨時購買頗便遊客本館



上紅廟

女

湖洲老洲

洲長

寧洲

寺觀明

街三黃

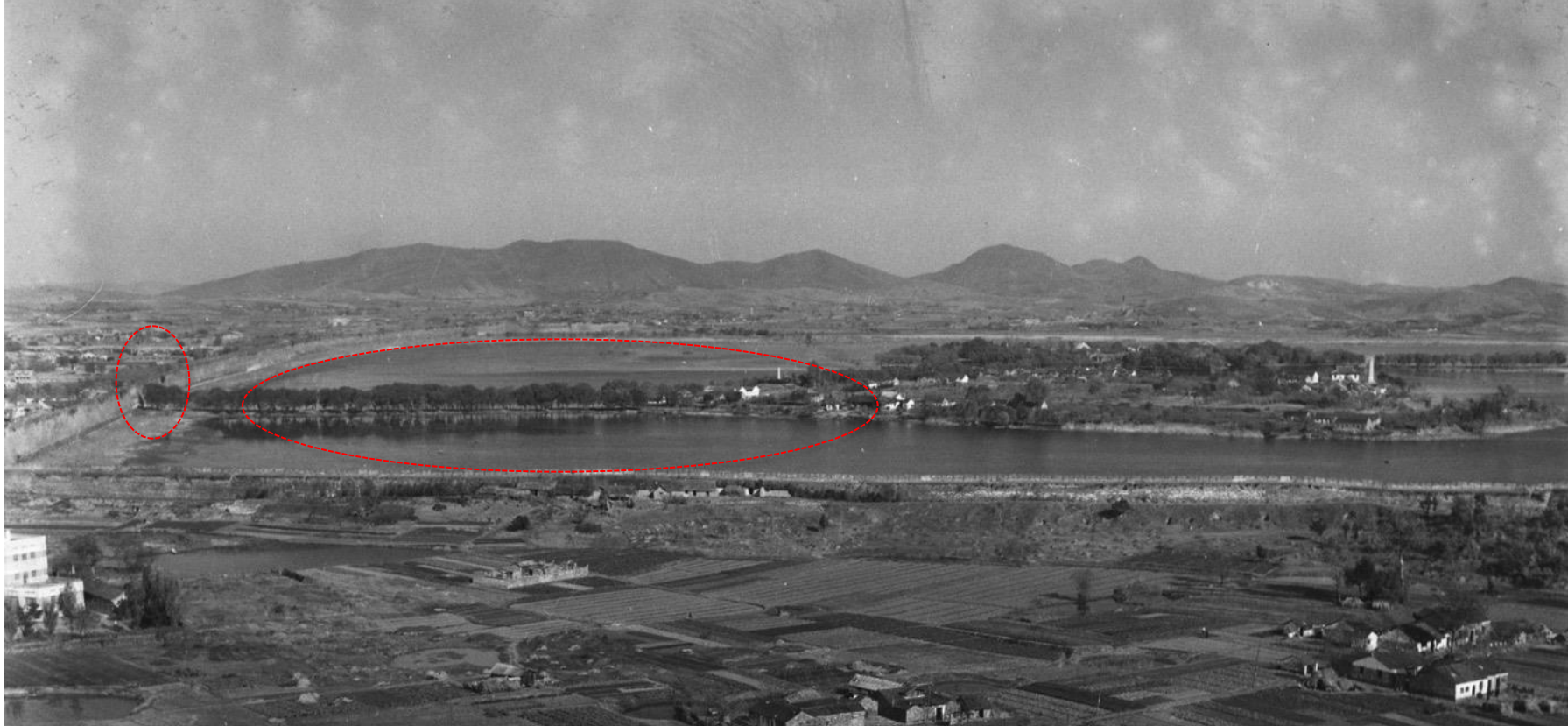
亭子百

橋子新

寺佛大

站車

寺觀



Xuanwu Gate 2007



Mo-Chu-Hu (A Lake) And Shan-Chin-Lou. (樓拱) 湖 愁 莫



Mochou lake



Wulong Tan lake

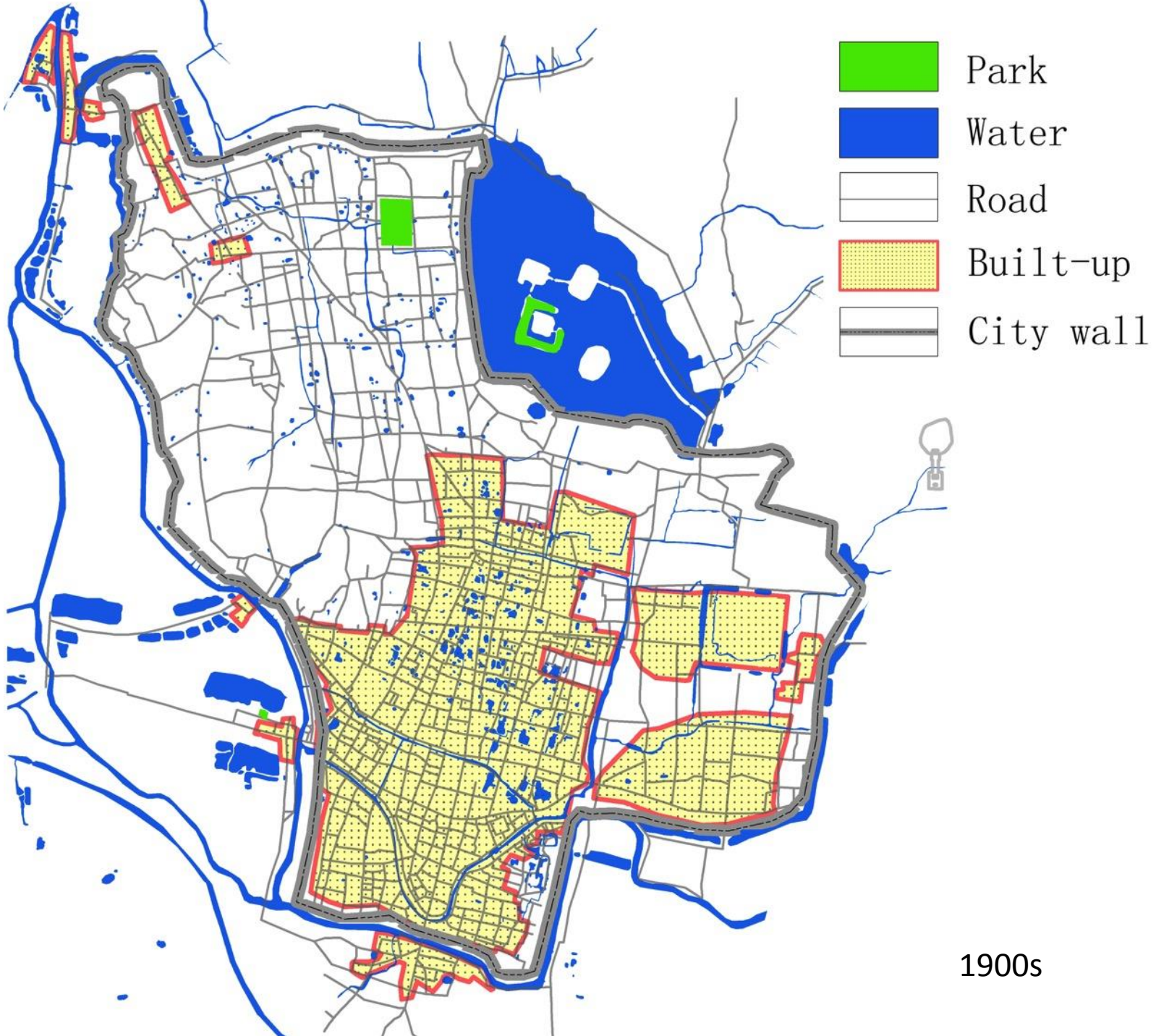


Confucius Temple



Confucius Temple market





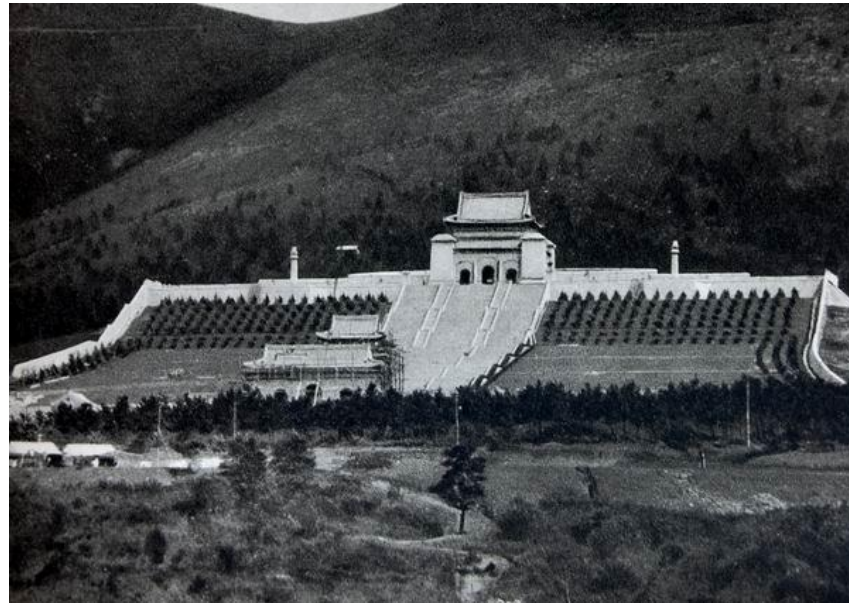
1900s

1900s-----1912-----1937-----1949-----1979-----2000

the Republic of China
building *Capital city*



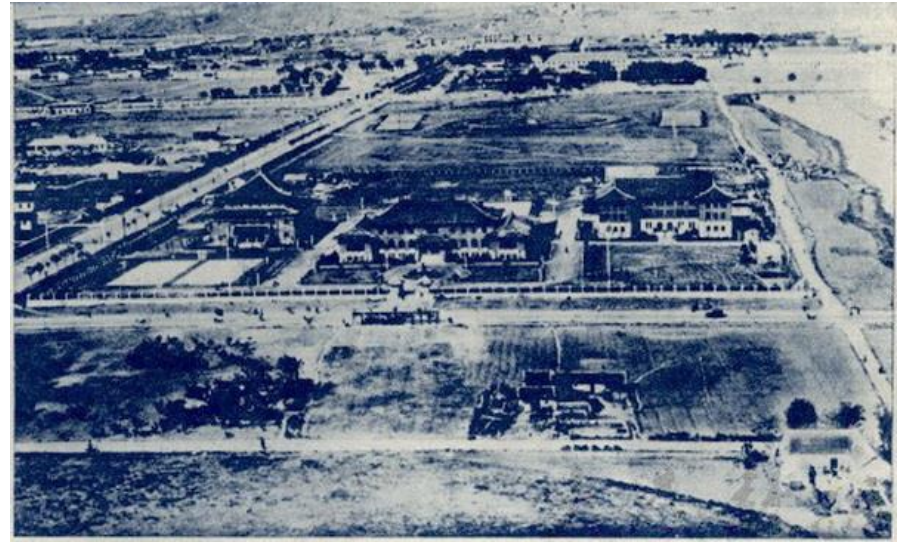
Sun Yat-sen (1866-1925)



Mausoleum of Sun Yat-sen

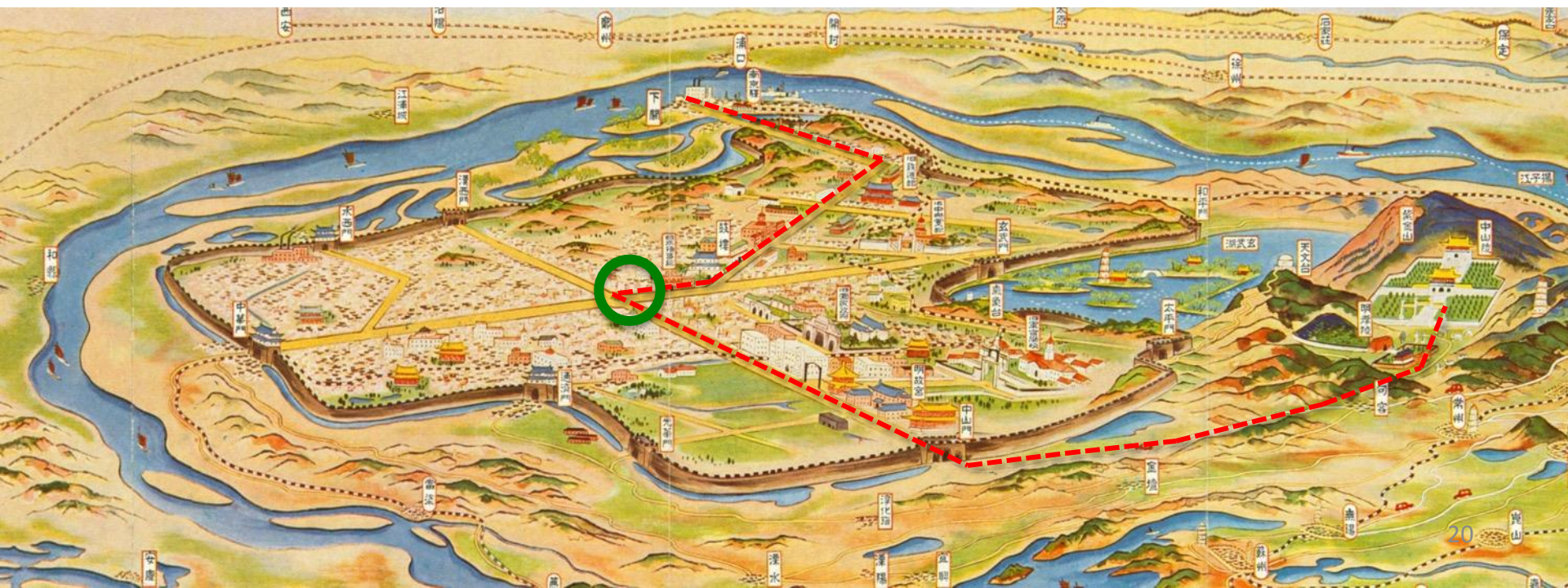


Zhongshan Road



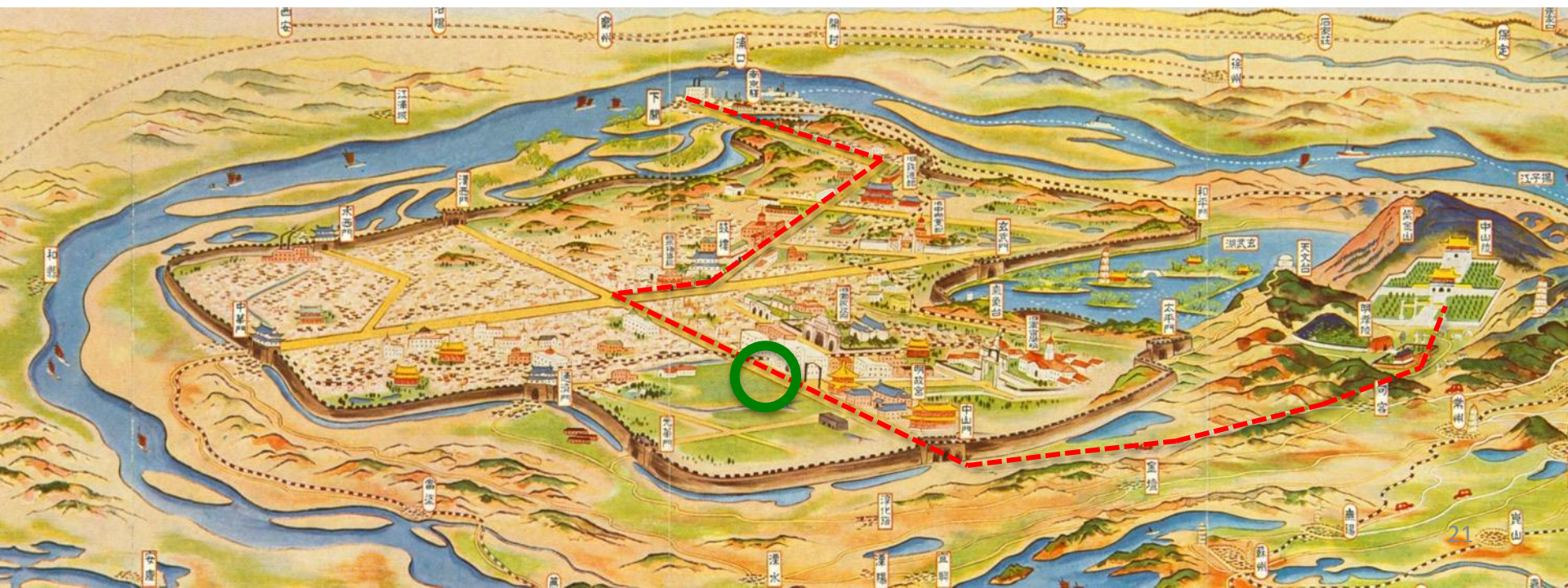


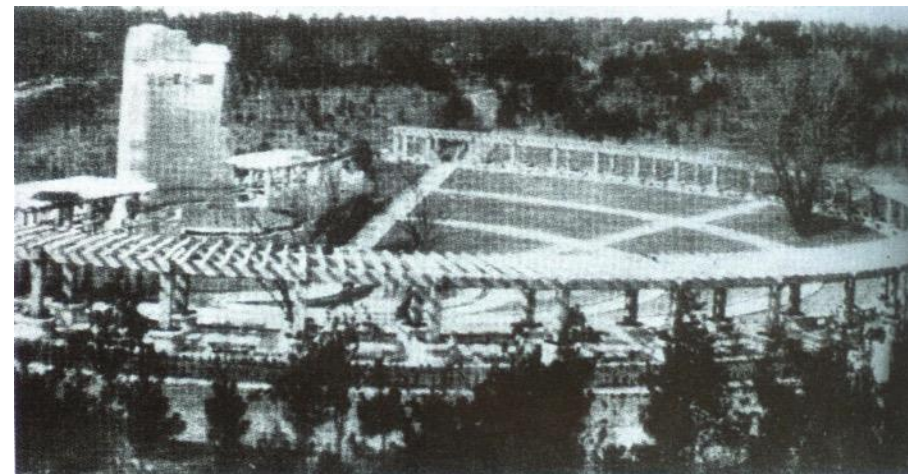
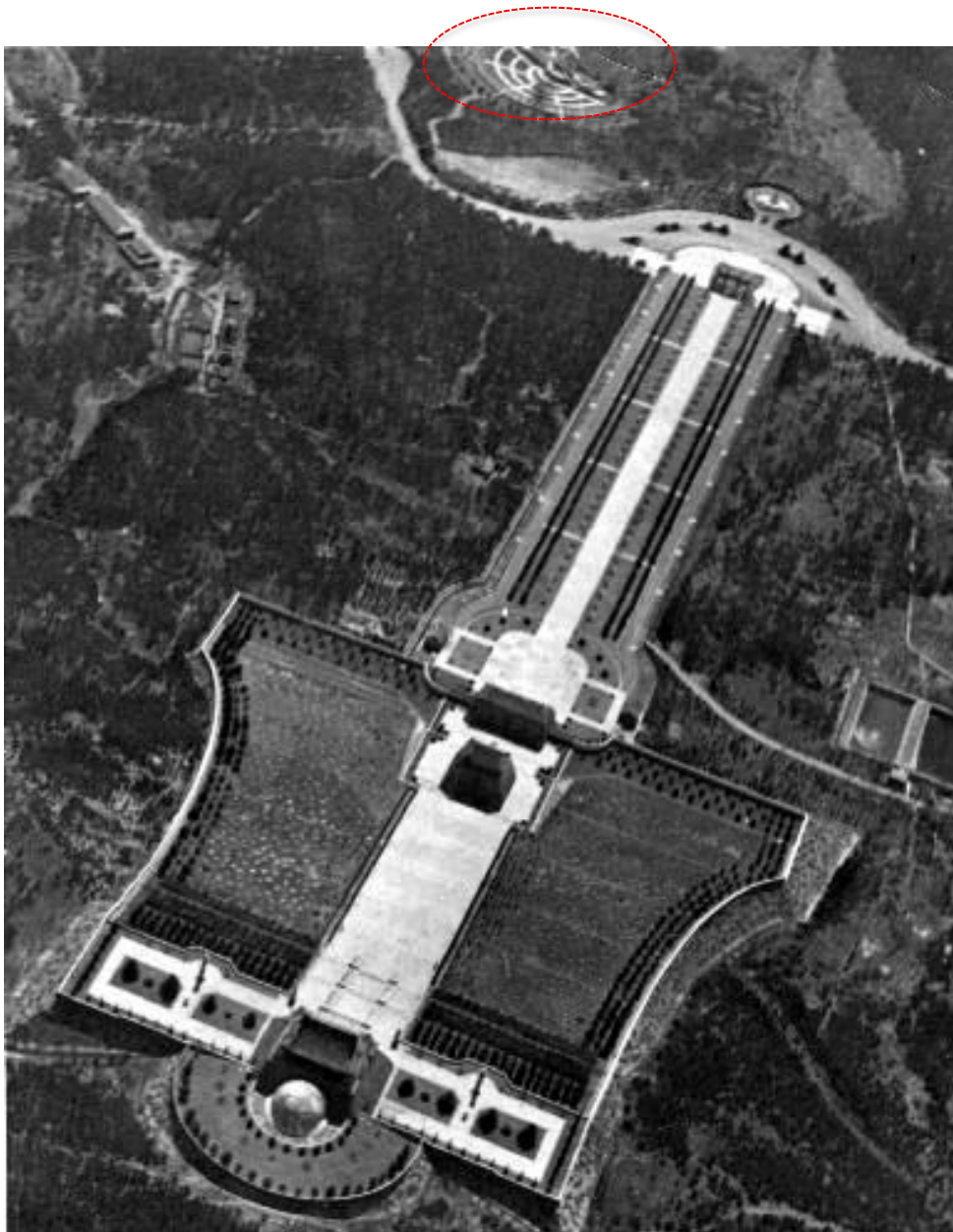
Xinjiekou square



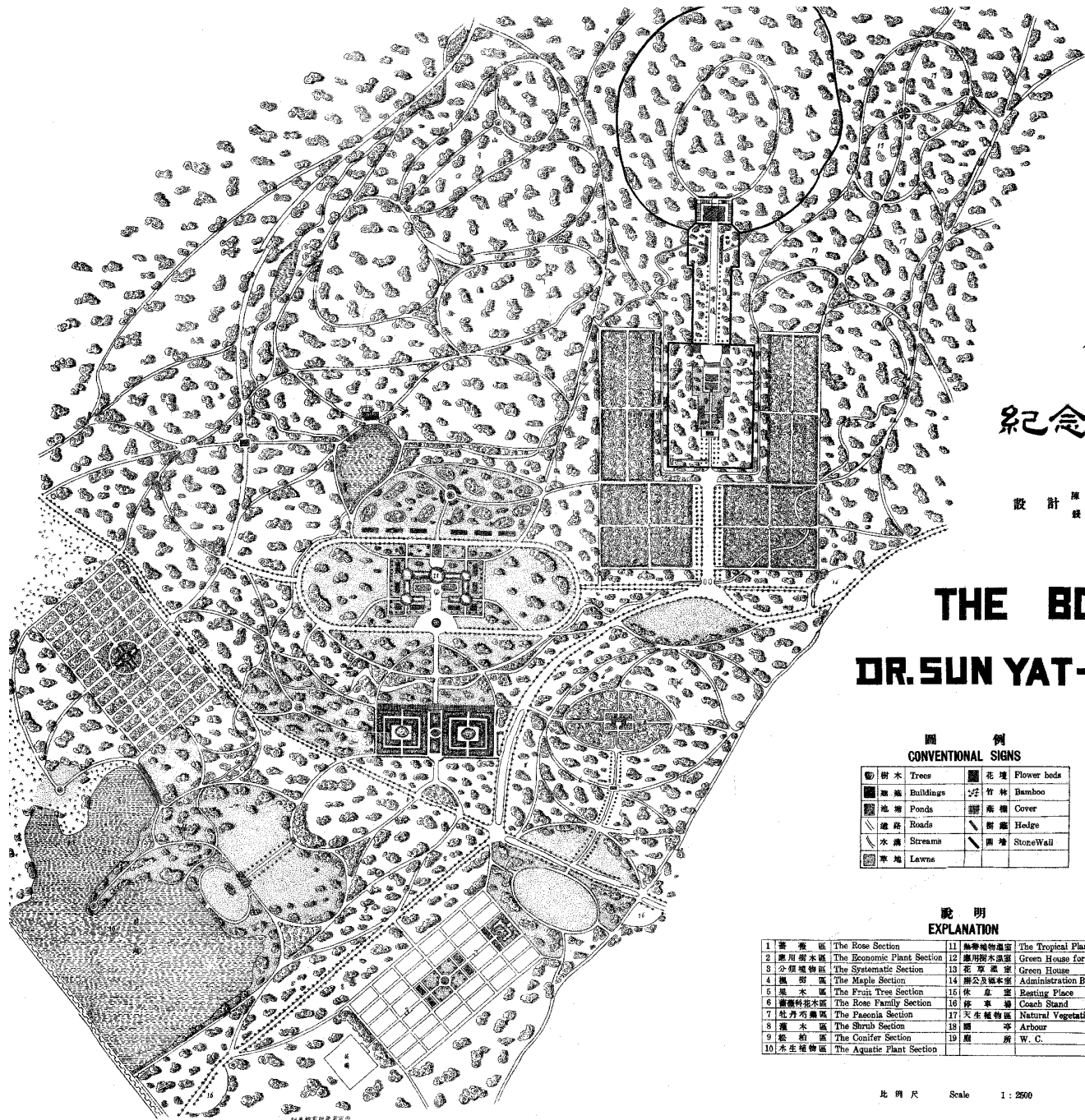


The political park





Music amphitheater



總理陵園

紀念植物園設計圖

設計 陳 維 傳 煥 光 秦 仁 昂 繪 圖 章 君 瑞 吳 士 八 *

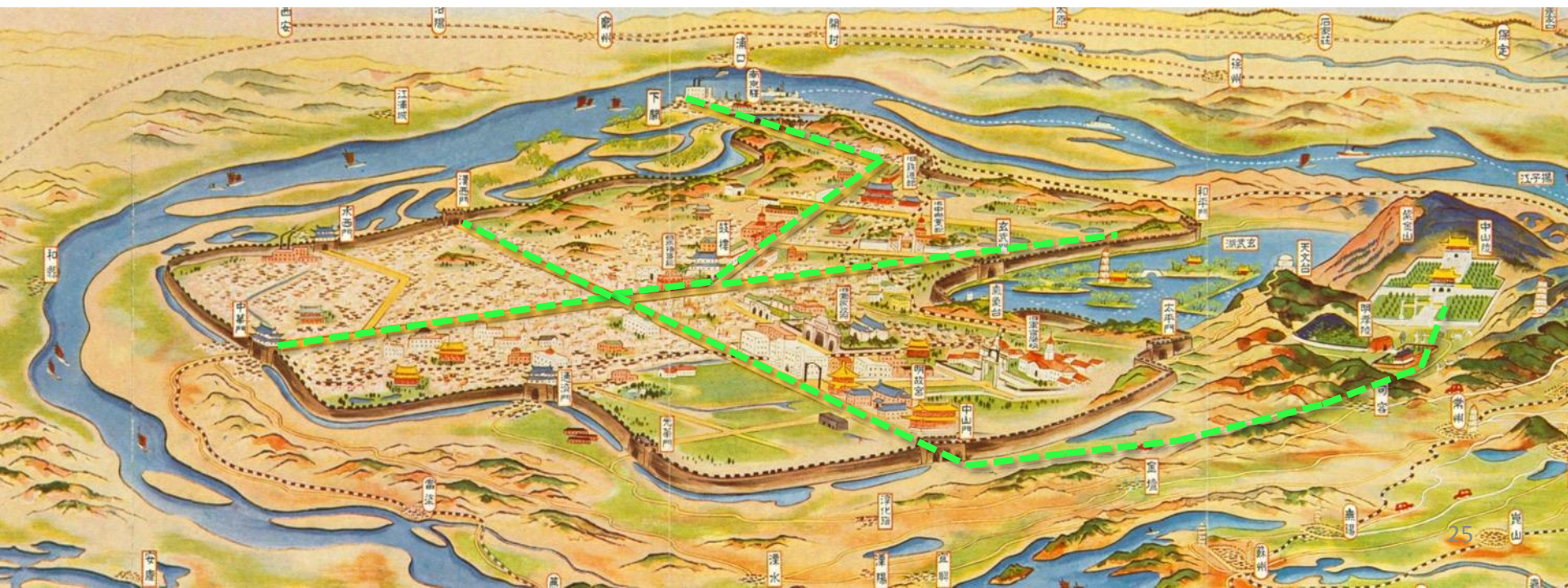
THE BOTANIC GARDEN DR. SUN YAT-SENS MEMORIAL PARK

圖 例 CONVENTIONAL SIGNS

樹木 Trees	花壇 Flower beds
建築 Buildings	竹林 Bamboo
池塘 Ponds	廣棚 Cover
道路 Roads	樹籬 Hedge
溪流 Streams	圍牆 StoneWall
草地 Lawns	

說 明 EXPLANATION

1 薔薇區 The Rose Section	11 熱帶植物溫室 The Tropical Plant Section
2 應用樹木區 The Economic Plant Section	12 應用樹木溫室 Green House for Economical Plants
3 分類植物區 The Systematic Section	13 花草溫室 Green House
4 楓樹區 The Maple Section	14 辦公及藏書室 Administration Building and Museum
5 果木區 The Fruit Tree Section	16 休息室 Resting Place
6 薔薇科花木區 The Rose Family Section	16 停車場 Coach Stand
7 亞力克蘭區 The Faecnia Section	17 天然植物區 Natural Vegetation Section
8 灌木區 The Shrub Section	18 湖 亭 Arbour
9 松柏區 The Conifer Section	19 廁 所 W. C.
10 水生植物區 The Aquatic Plant Section	



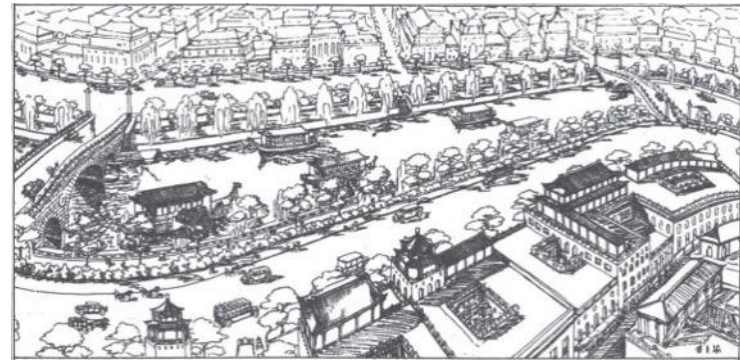


圖 獸 鳥 通 大 庭 林 岸 河 河 淮 泰

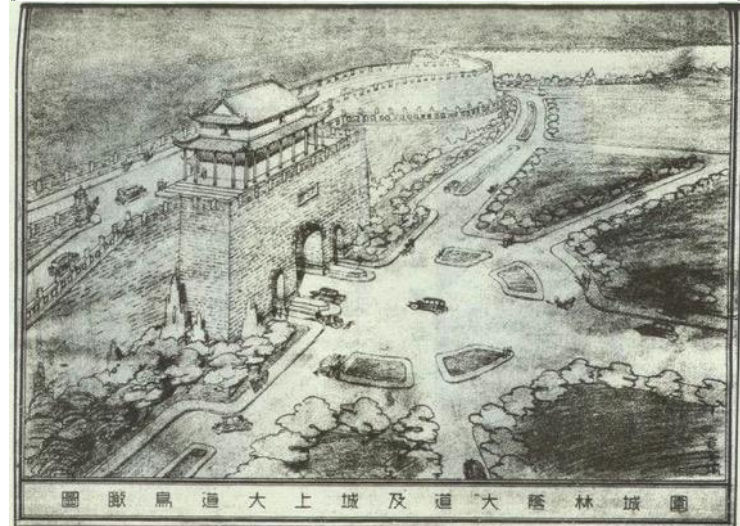
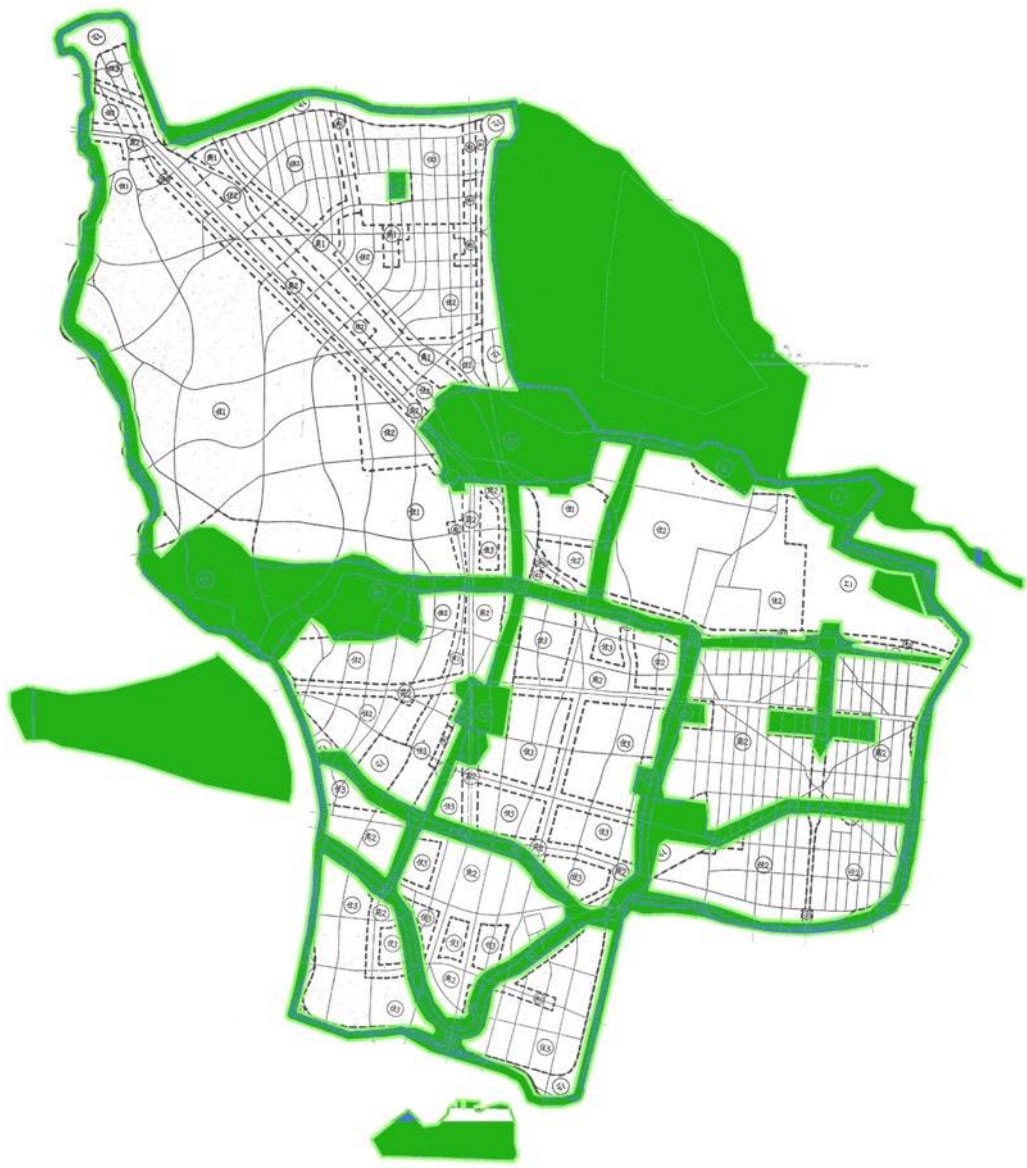
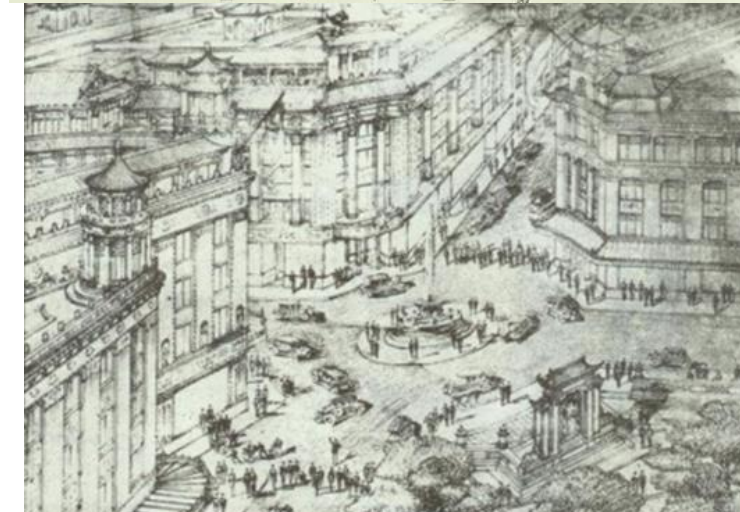
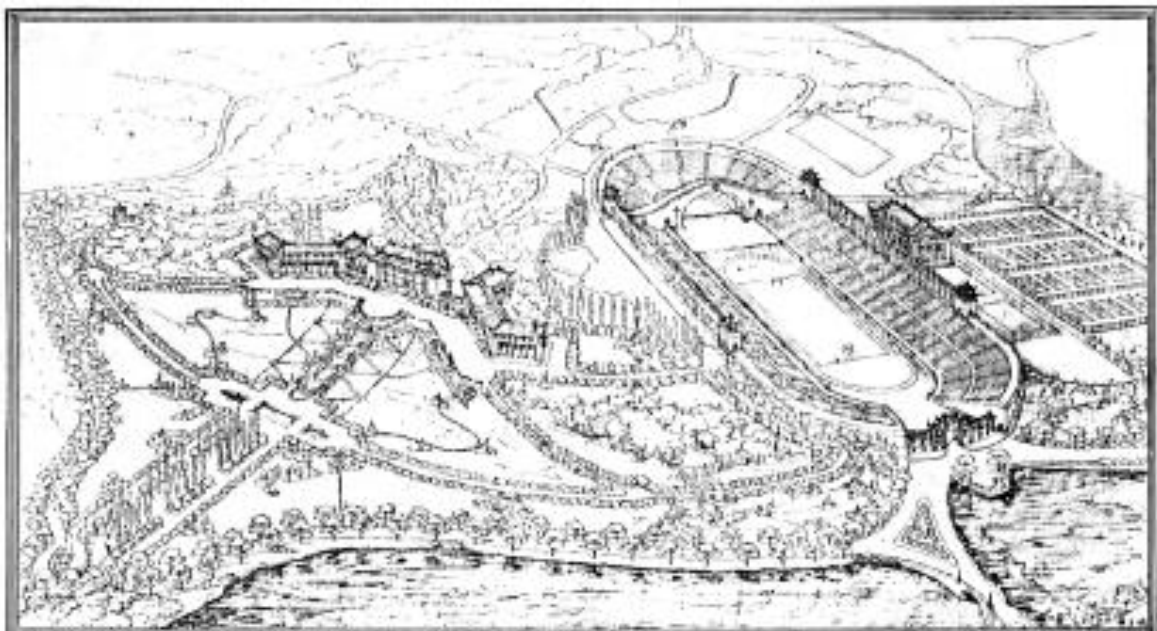
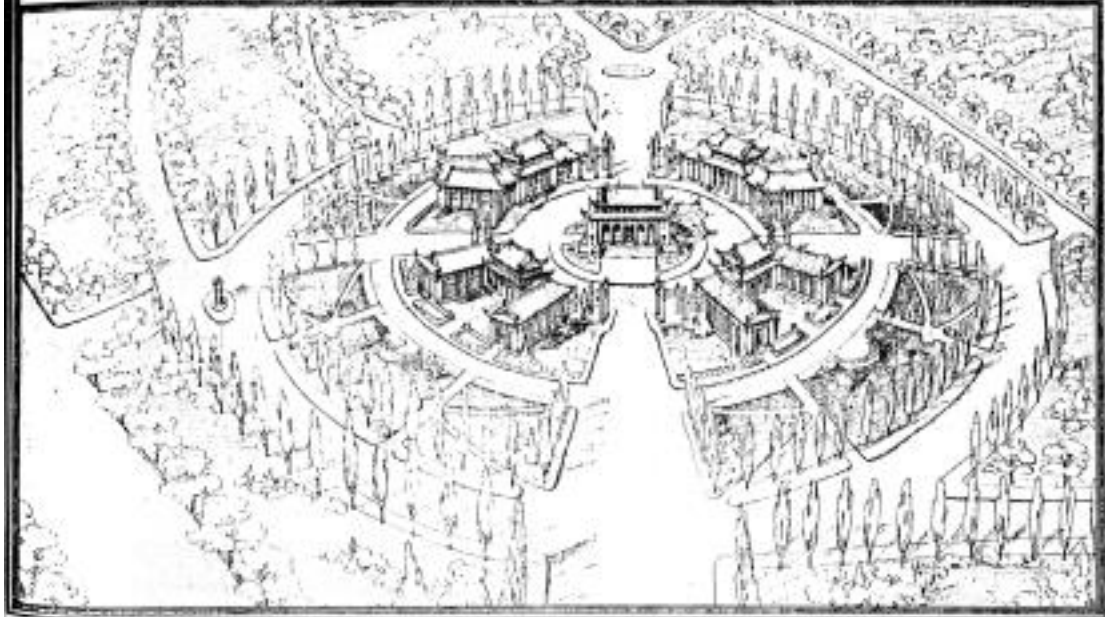


圖 獸 鳥 通 大 上 城 及 道 大 庭 林 城 園

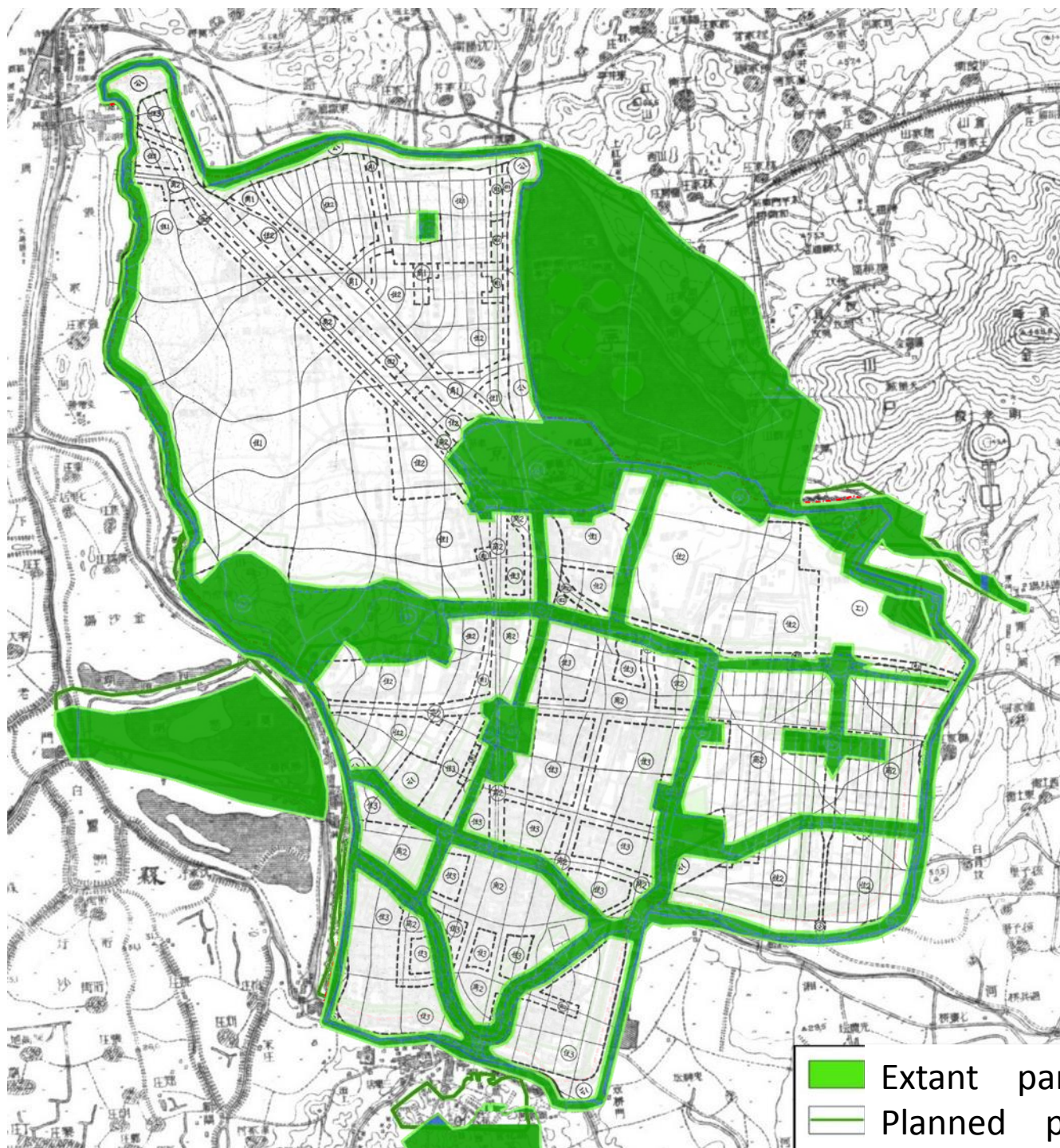
圖 五 十 二 第





傅厚崗市行棧區鳥瞰圖



五台山一帶文化區鳥瞰圖



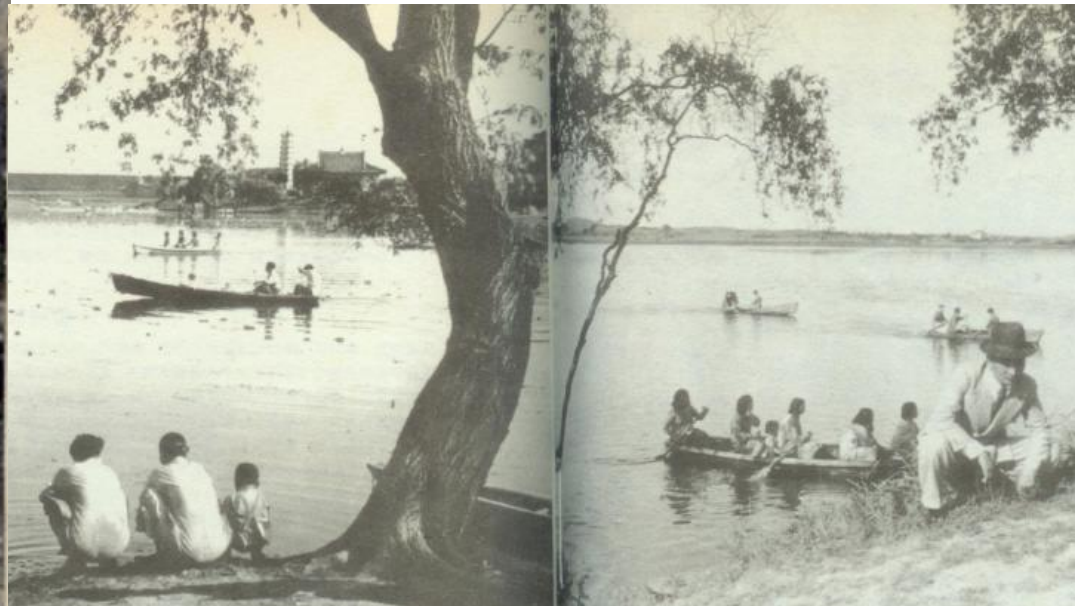
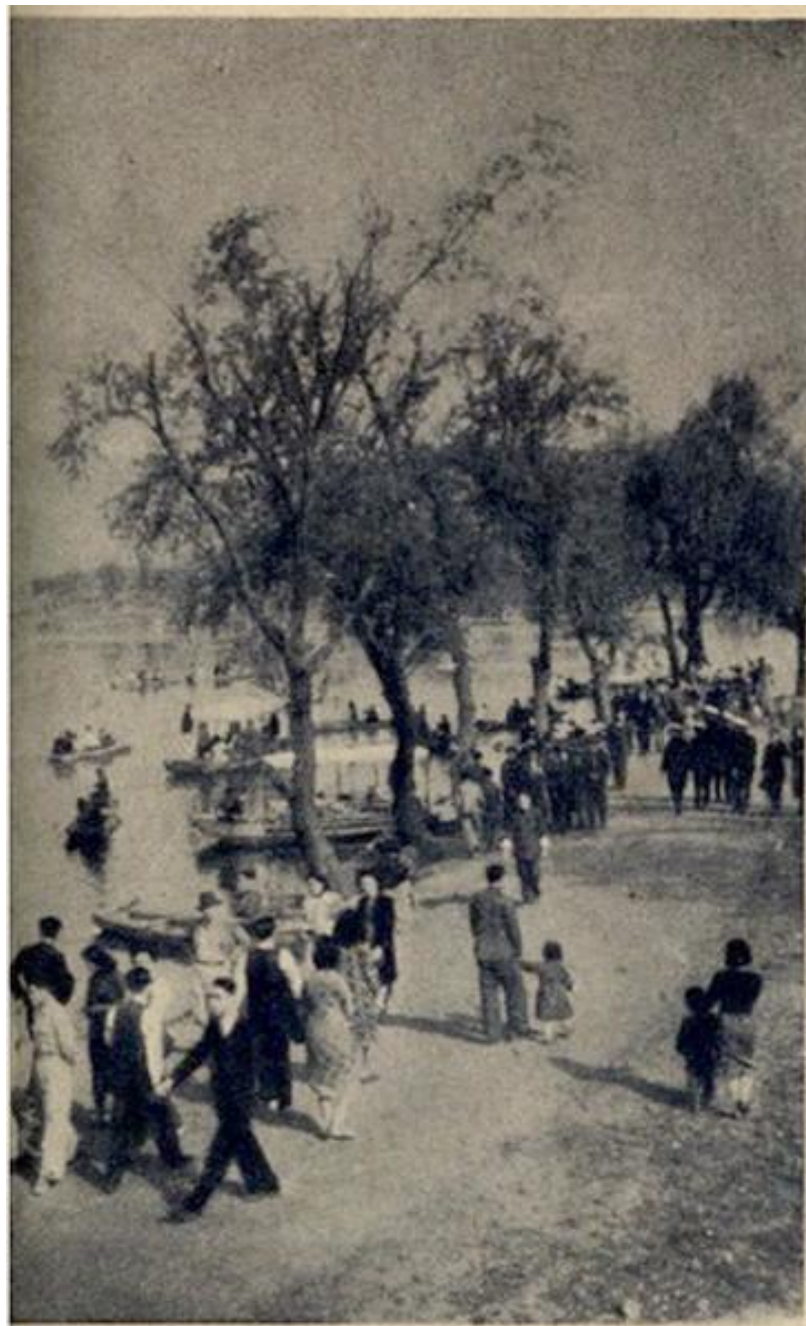
-  Extant parks
-  Planned parks



Xuanwu lake Park

五洲公園遊艇賞荷





Xuanwu lake Park

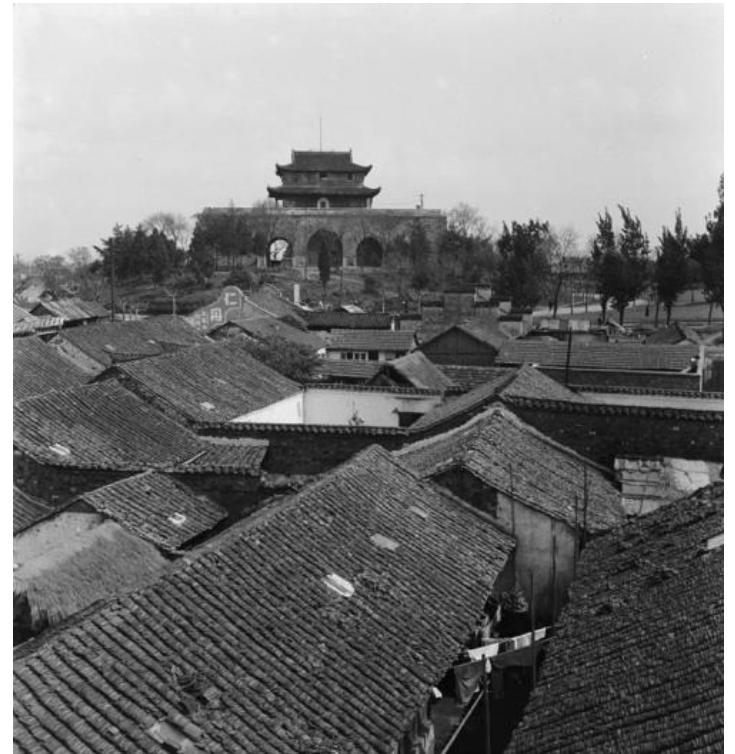


Mochou lake Park

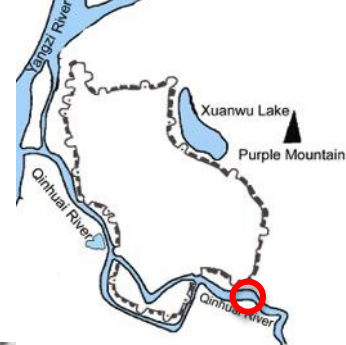




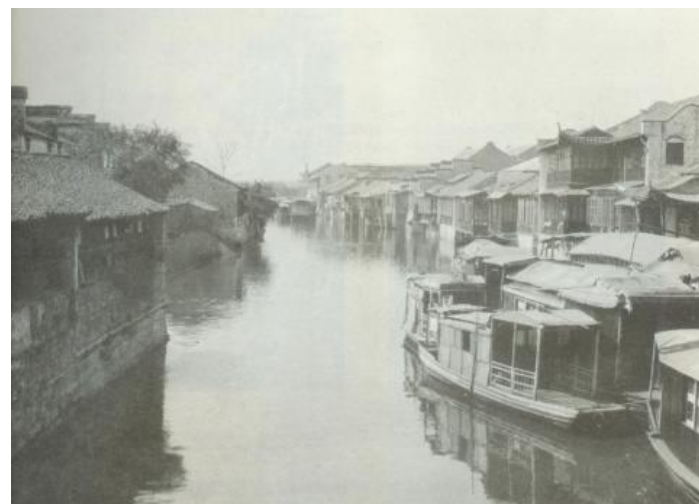
Drum Tower Park



View from the south



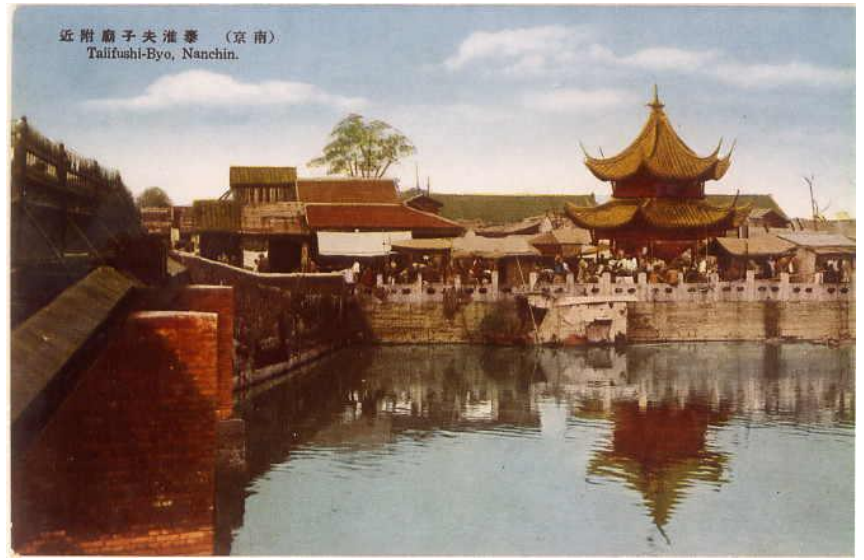
First Park



クーリタノ外壁城 (京南)
Creek, Outside Stonghold, Nanchin.

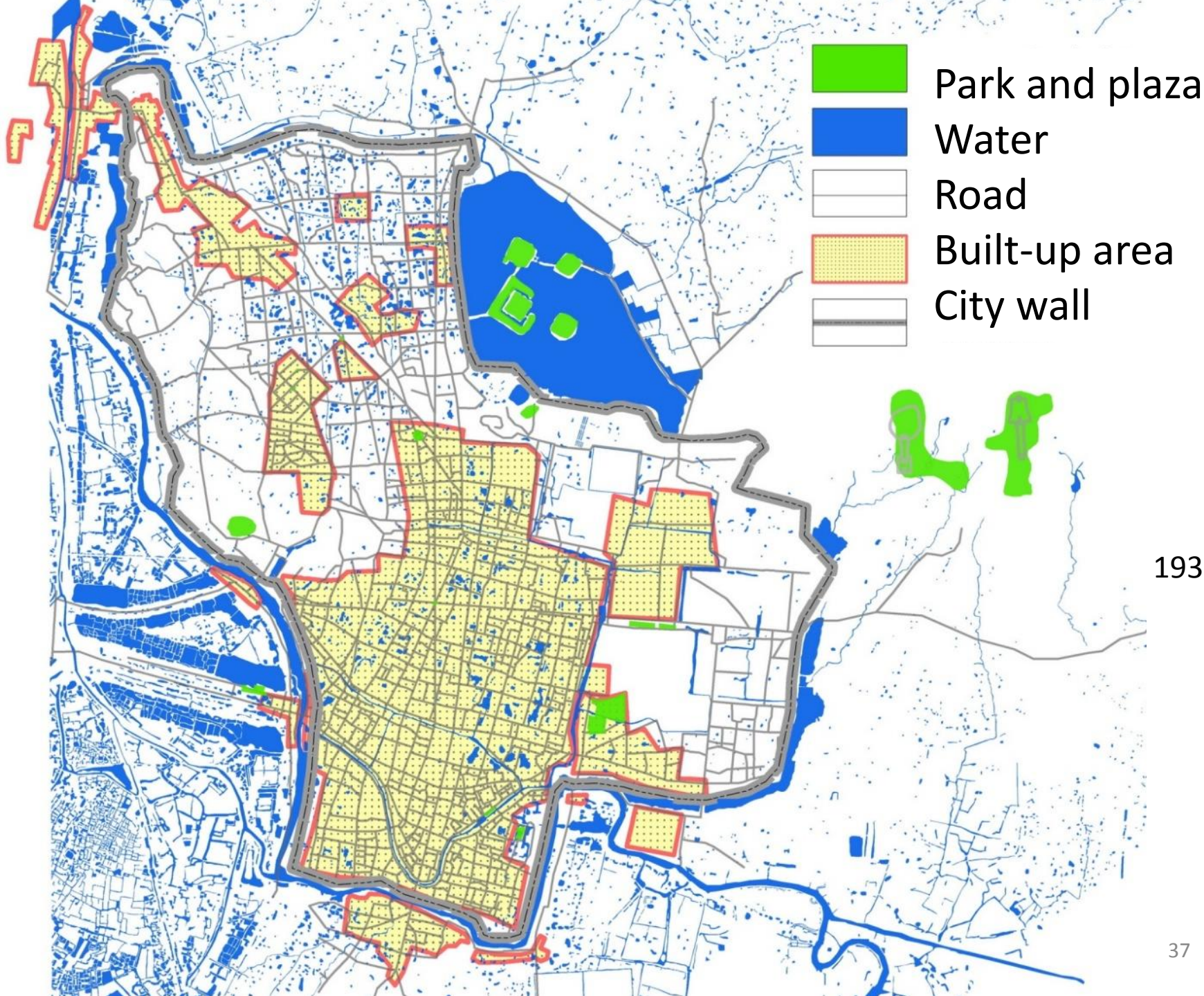


近附廟子夫淮臺 (京南)
Taliifushi-Byo, Nanchin.



近附門濟通 (京南)
Shusaimon, Nanchin.





1930s

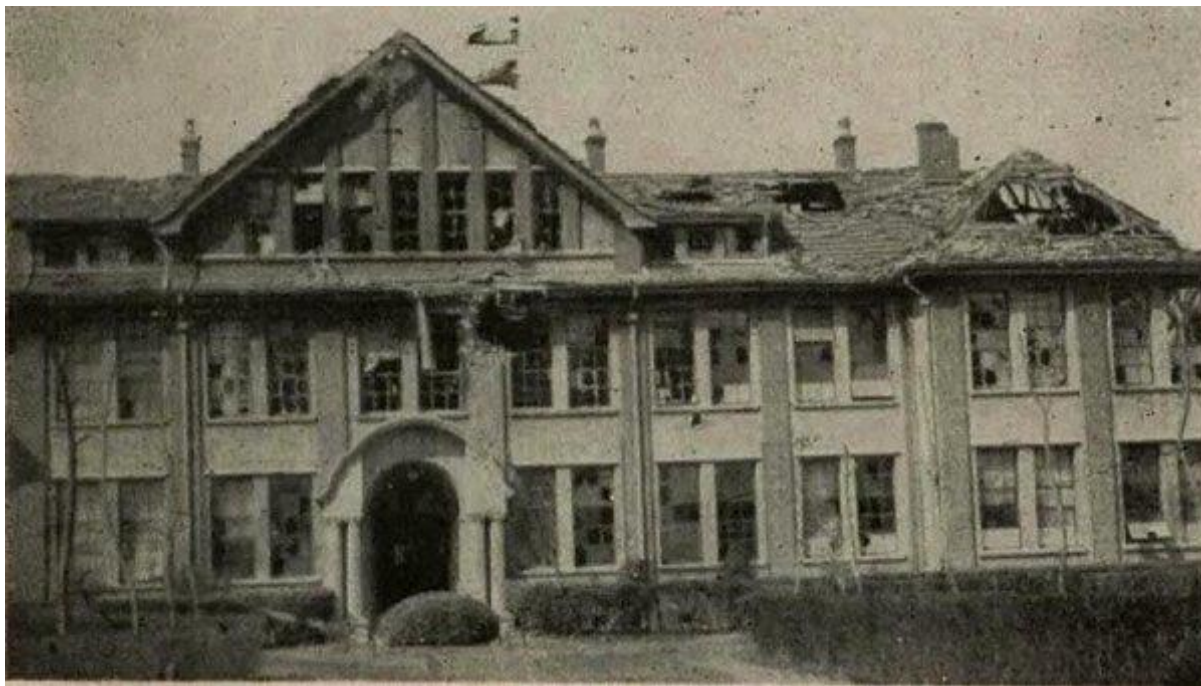
1900s-----1912-----1937-----1949-----1979-----2000

WWII and the civil war



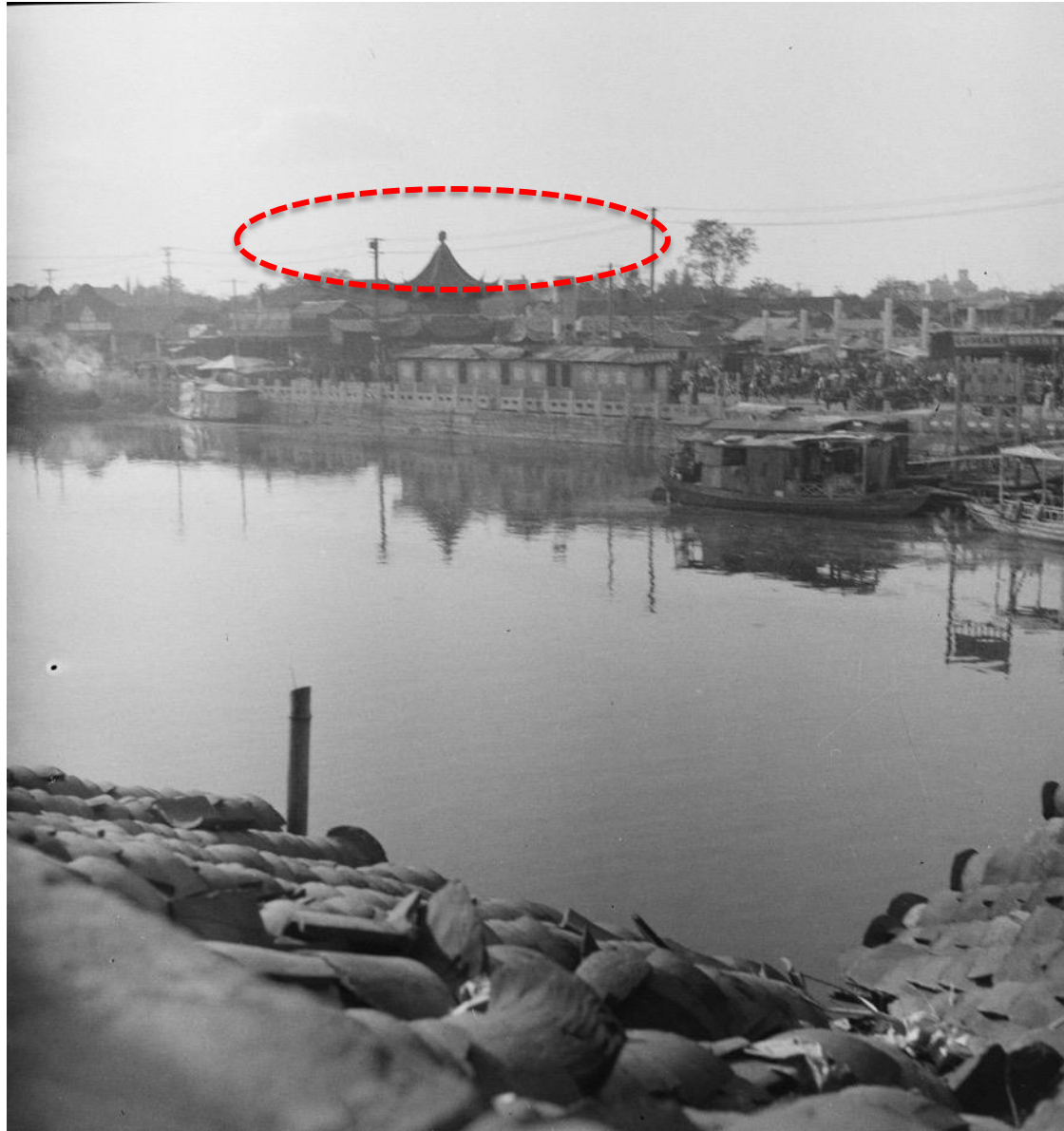


City wall Gates

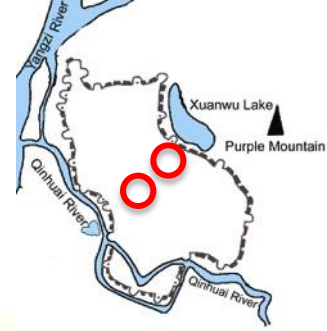


National Central University

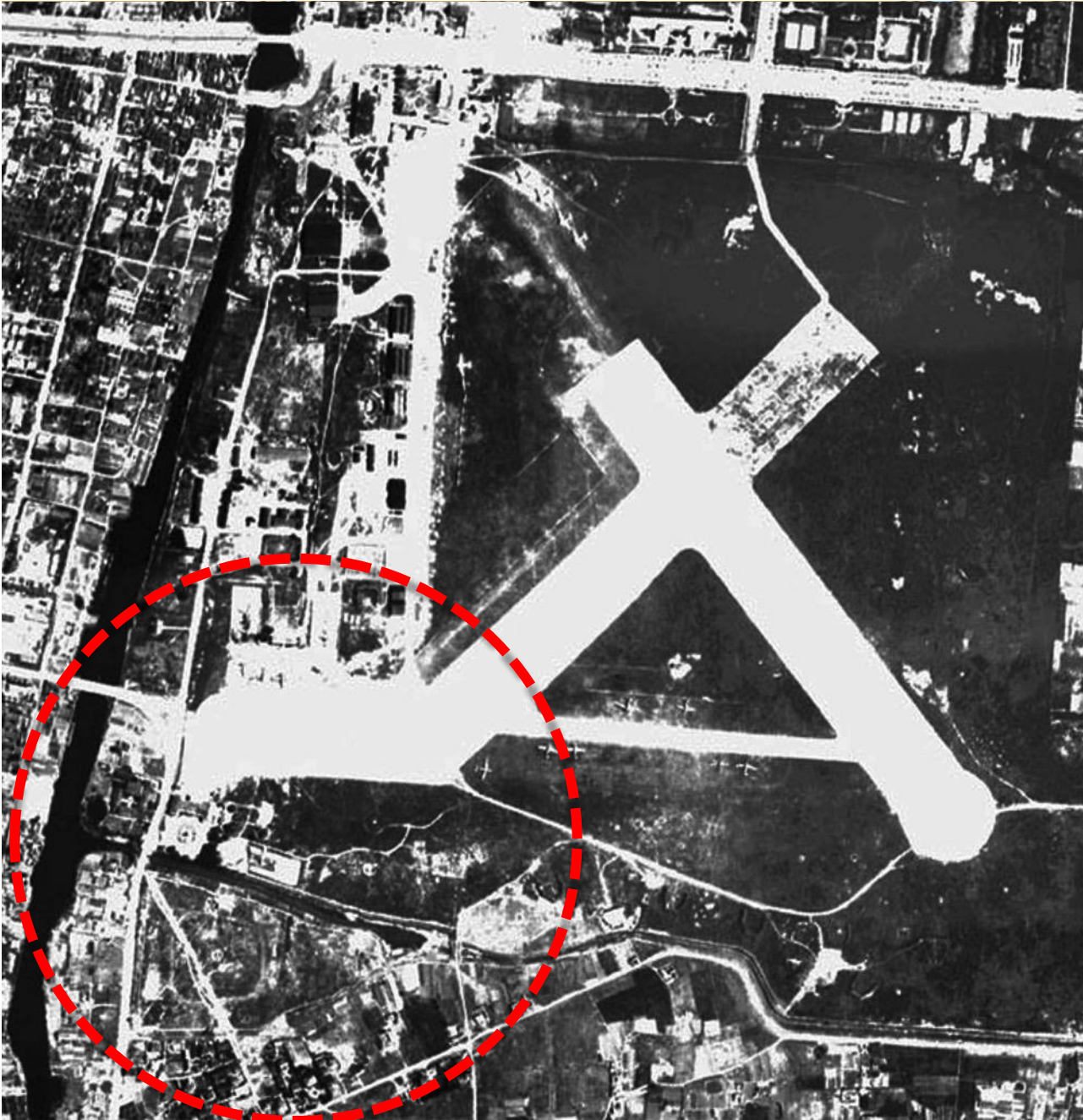


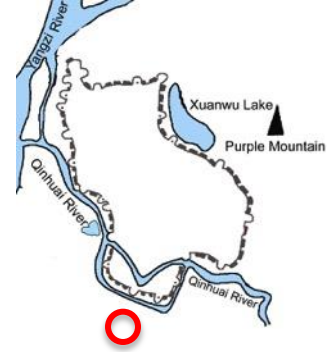


Bombed Confucius Temple



BROWNIE PHOTO CO.
HAWAII, U.S.A.
CHINA





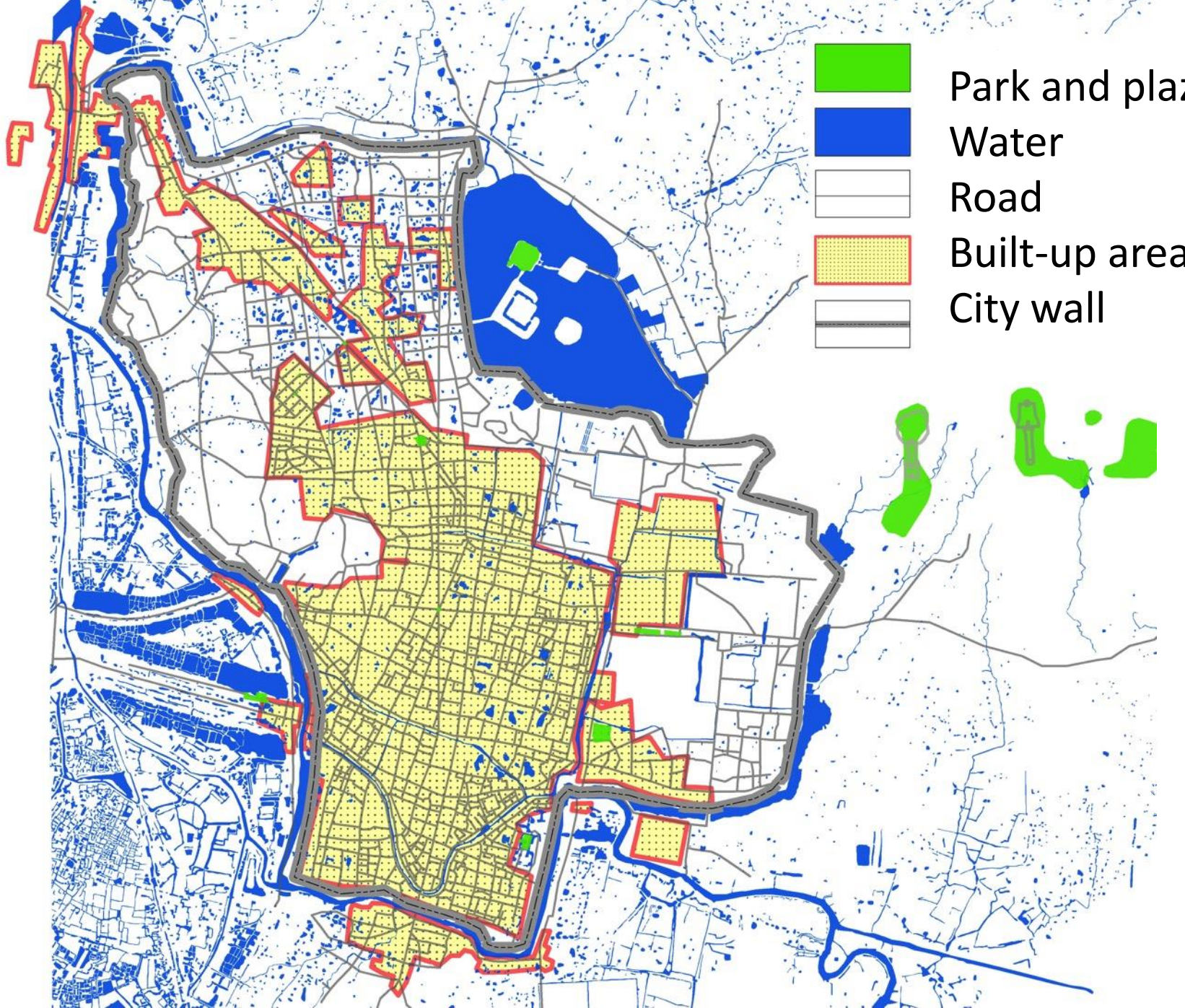
An-de-men Park, 1937



Guomindang army retreating from Nanjing
1948



Communist army entering Nanjing
1949



1949

1900s-----1912-----1937-----1949-----1979-----2000

exploring socialist society





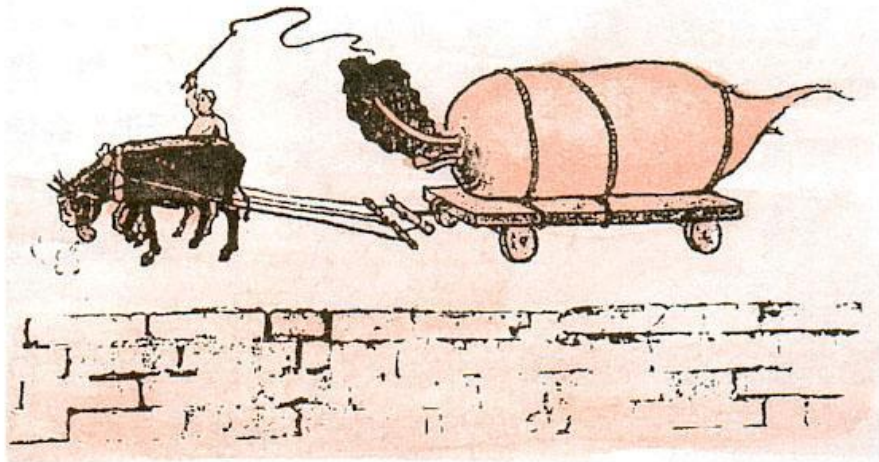


1948



1978

Mo-chou lake



“大跃进”时壁画：“一个萝卜千斤重，两头毛驴拉不动”。



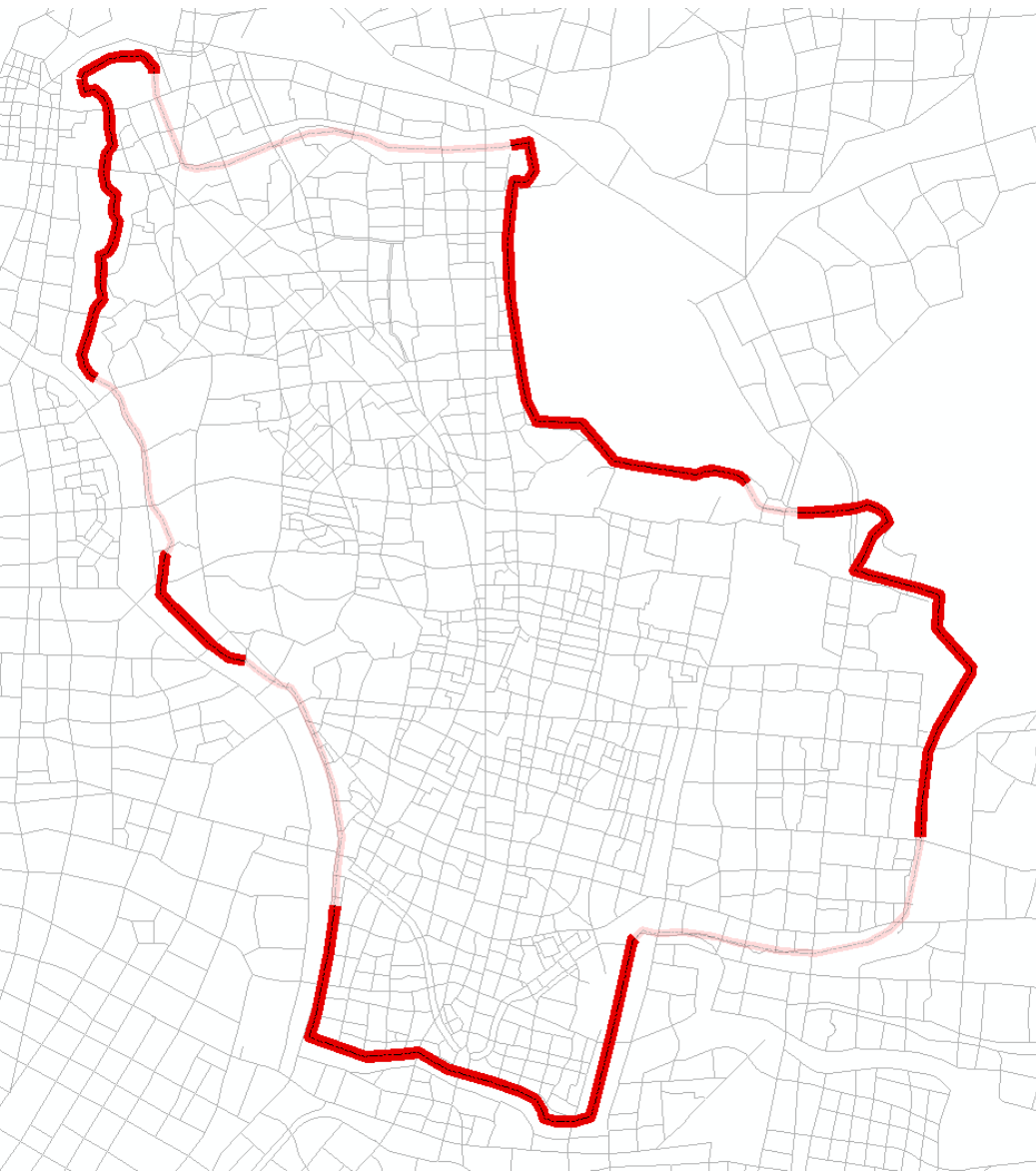
Rice Production, 10 ton per Chinese acre

The Great Leap

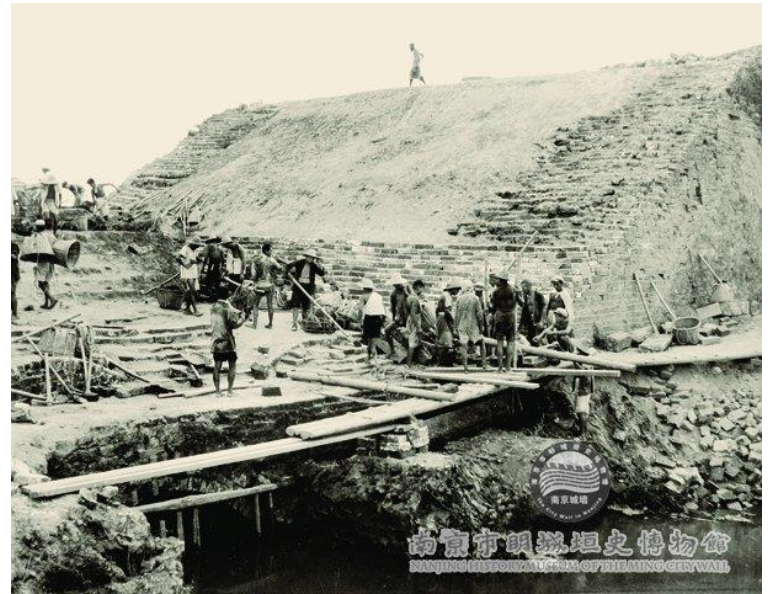
Coupling Green Space with Production



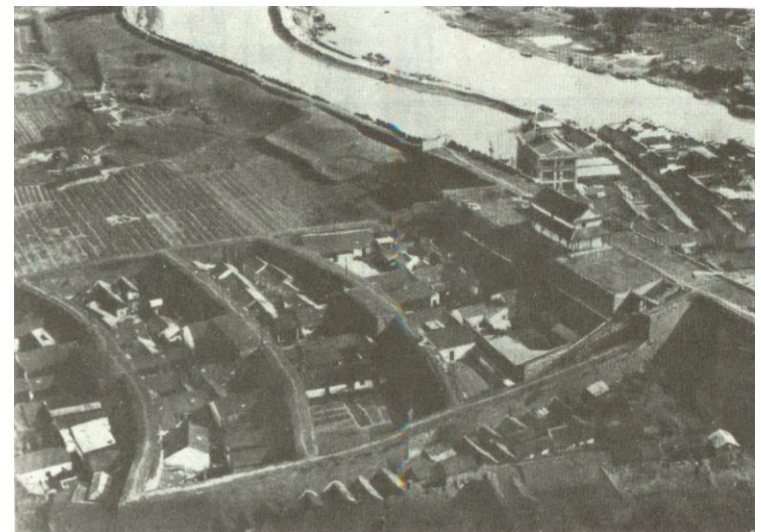
Xuanwu lake park



 extant city wall



Demolishing the city wall, 1960s



Tongji Gate, demolished 1950s



Drum Tower Square 1960s



Xinjiekou Square 1960s



“文革”开始后，新街口成为“破四旧”重点区域。1966年，矗立在新街口广场的孙中山先生铜像换成了宫灯形牌楼，铜像被转移到中山陵园管理处保存，1985年3月12日又被安置到藏经楼孙中山纪念馆前。

@南京·吉吉
weibo.com/332710572



1937年12月，日军占领南京之前，新街口广场中央曾经放置过一枚巨大的炸弹模型，意在提醒人们警惕日军的空袭。



1937



1949年10月2日，南京50万市民在新街口庆祝新中国成立。

1949



1980s



2000s

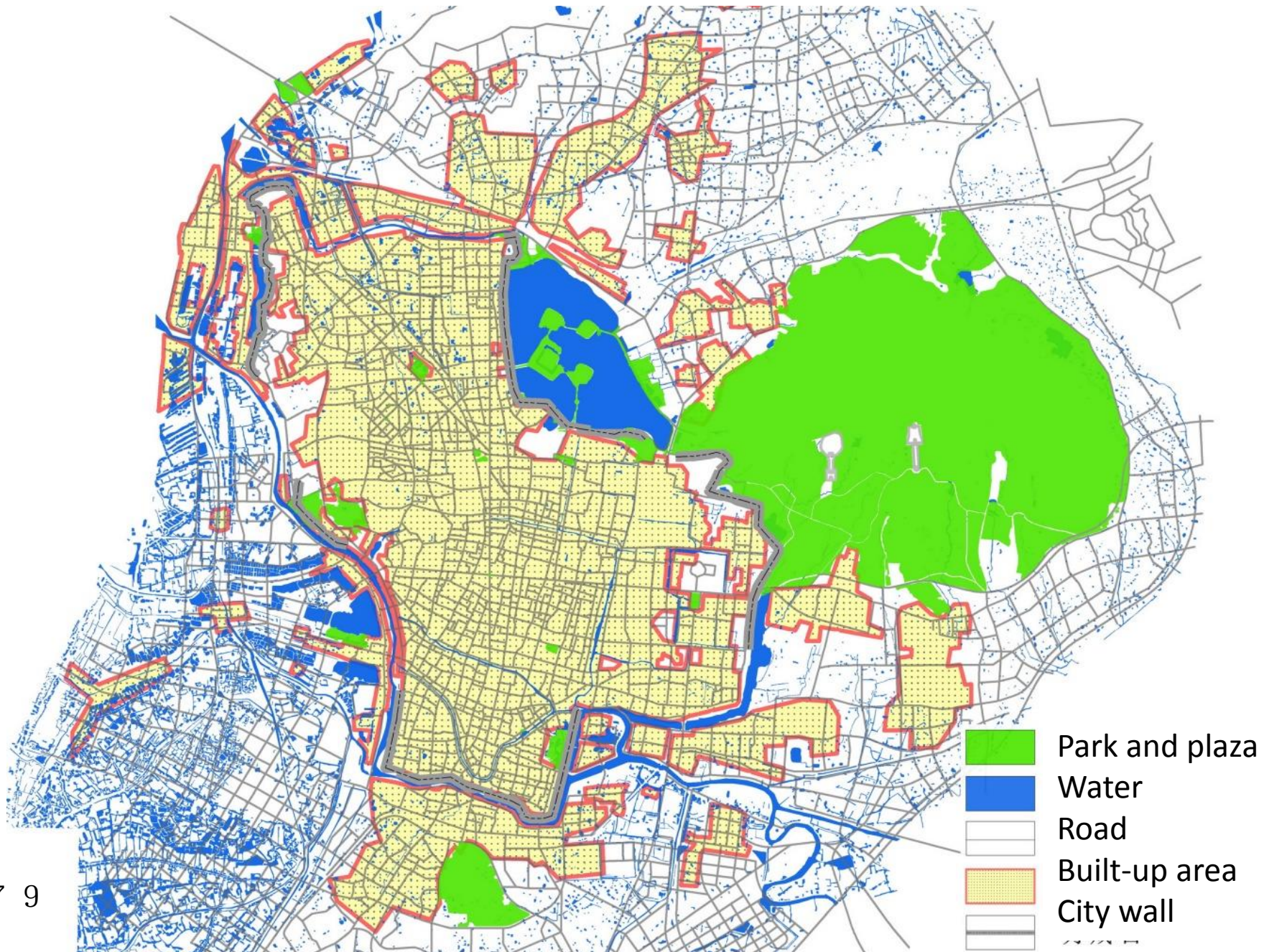


1970s



2000s

1 9 7 9

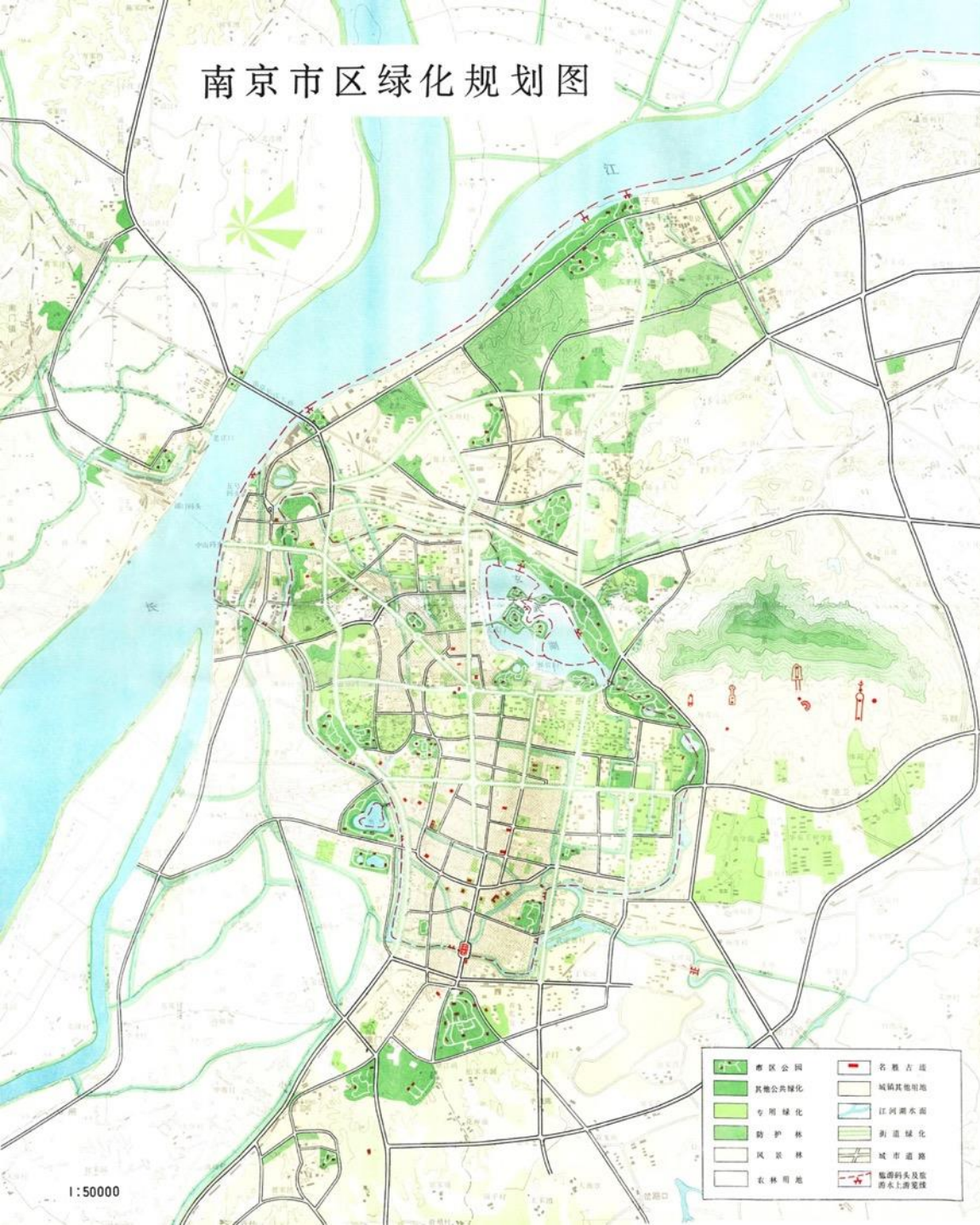


1900s-----1912-----1937-----1949-----1979-----2000

Toward market economy



南京市绿化规划图



Open space master plan, 1980

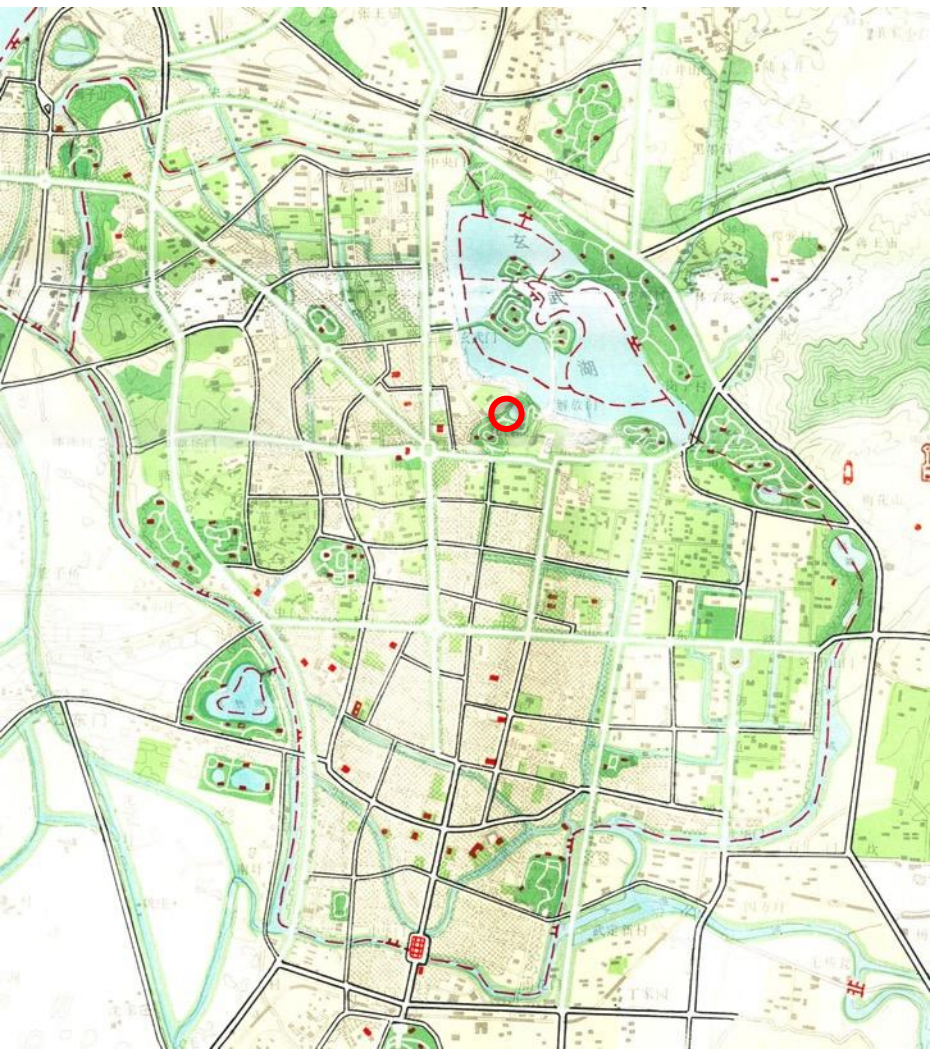




1980



2007



1980 master plan

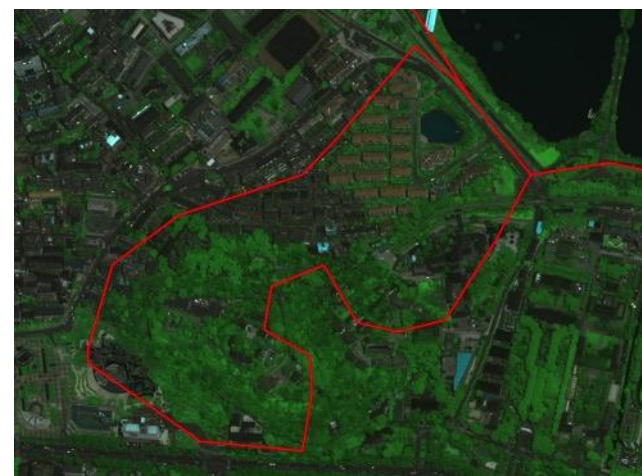
1979



1980 plan

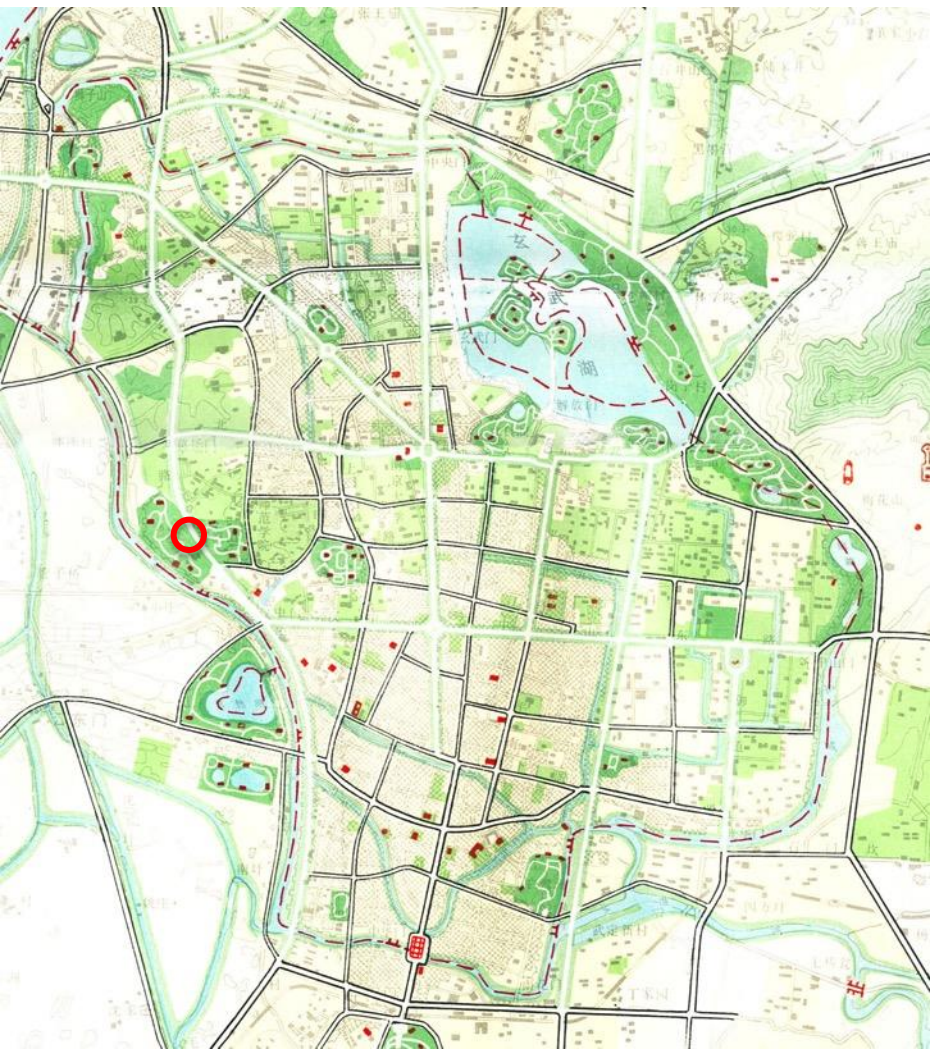


2007









1980 master plan

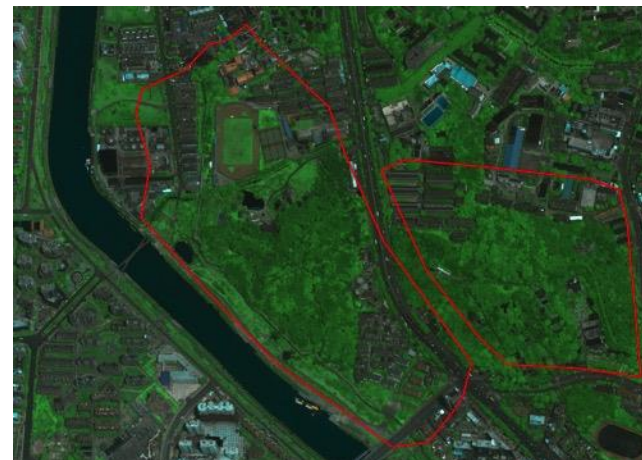
1979



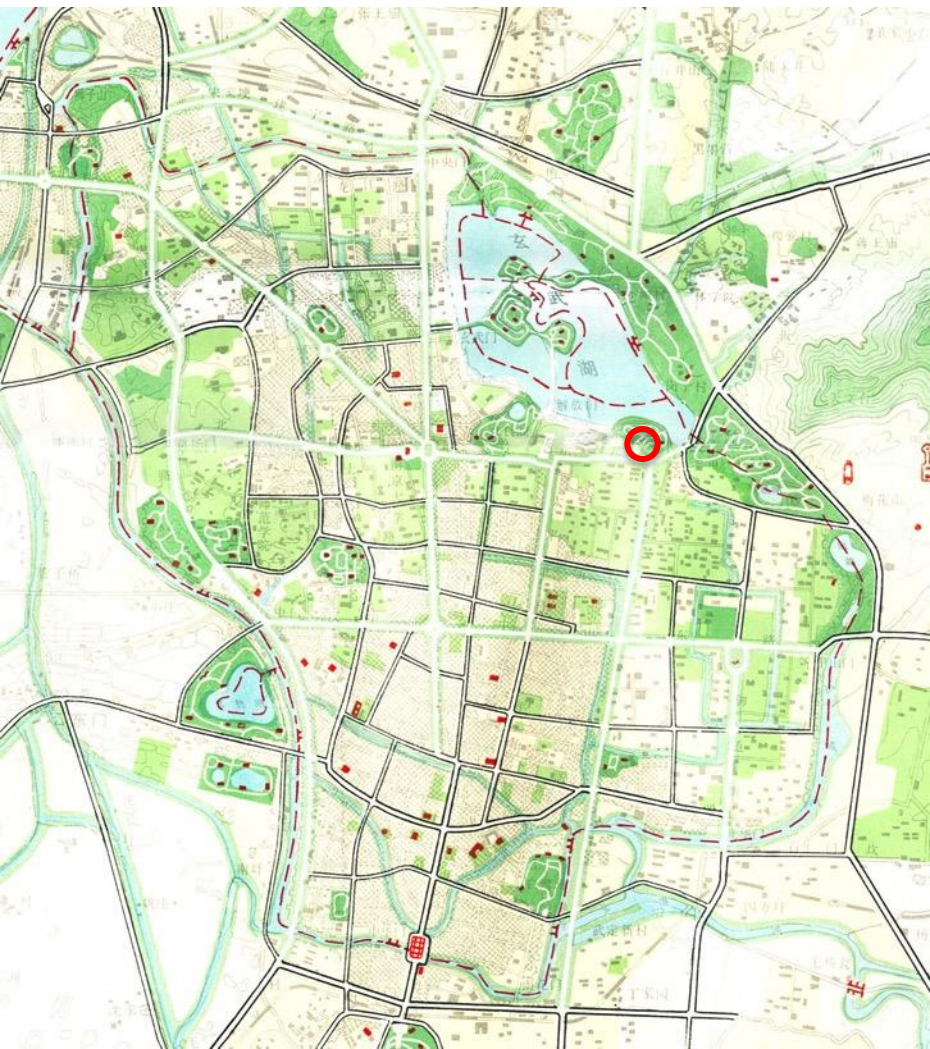
1980 plan



2007







1979



1980 plan



2007









City wall near South Gate 1978



City Wall park 2007



Mochou lake park 2000s



Bailu park 2000s



Xiaotaoyuan Park, 2007

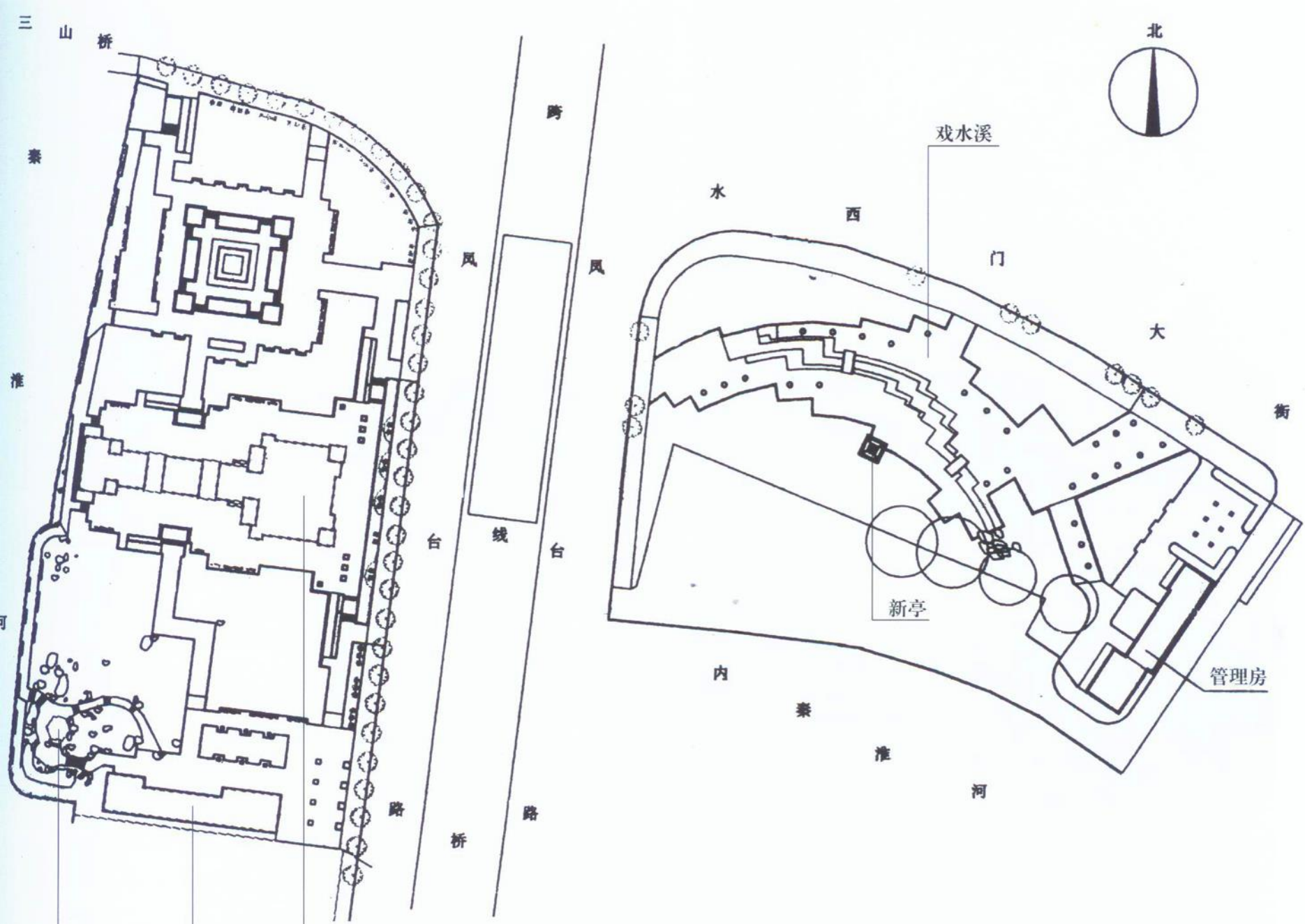




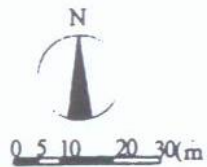
Xian Gate plaza, 2007







南京中医学院



虎

中

路

陶炼厂

汉

南京水泥研究院

- ① 石城堡
- ② 古城墙
- ③ 残存古城墙基础
- ④ 人口广场
- ⑤ “回归田园”广场
- ⑥ 下沉广场
- ⑦ 舞台
- ⑧ 石灯笼小品
- ⑨ 坐凳
- ⑩ 管理服务用房
- ⑪ 绿地

石城桥

路

秦

淮

河

路

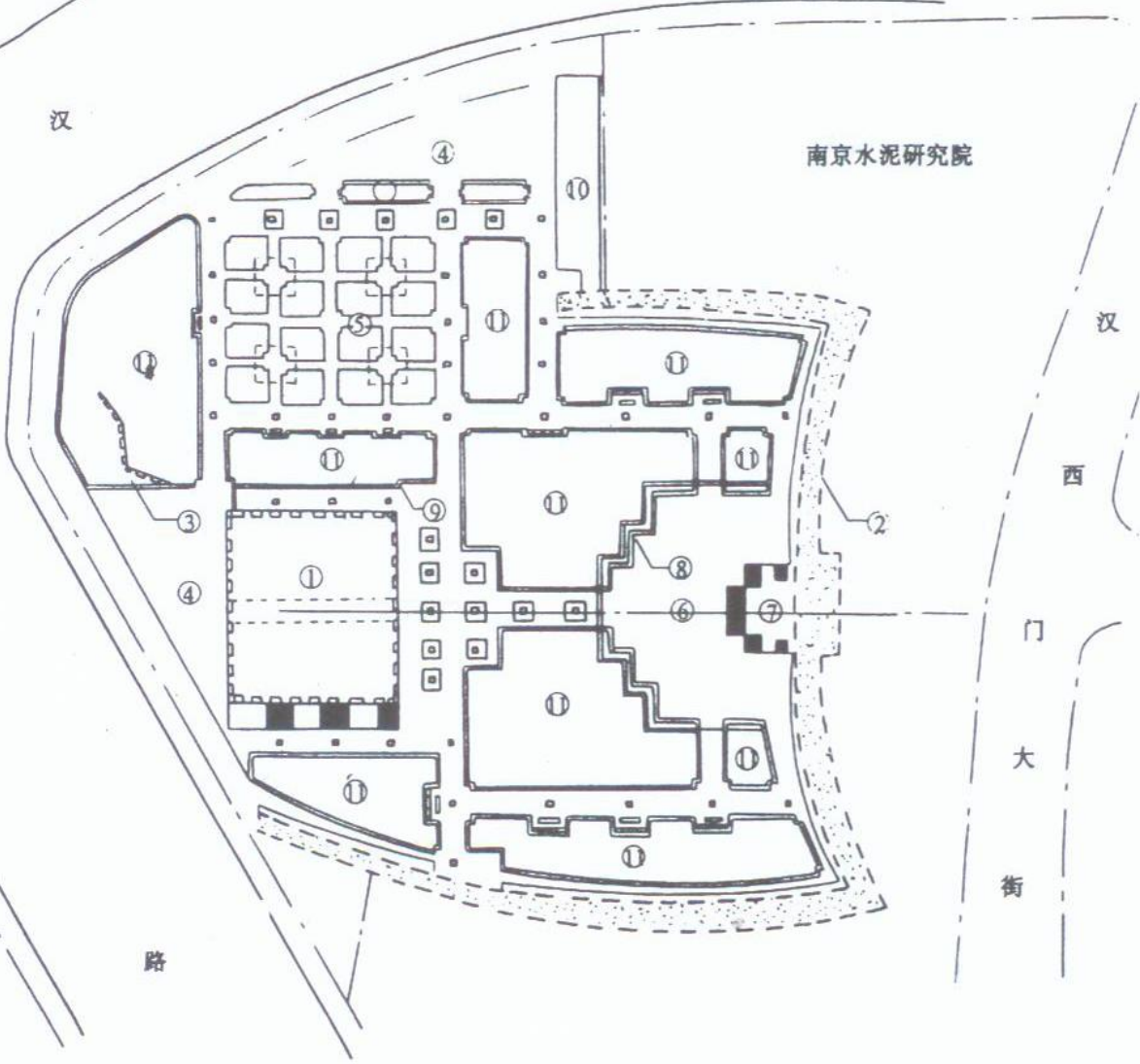
汉

西

门

大

街



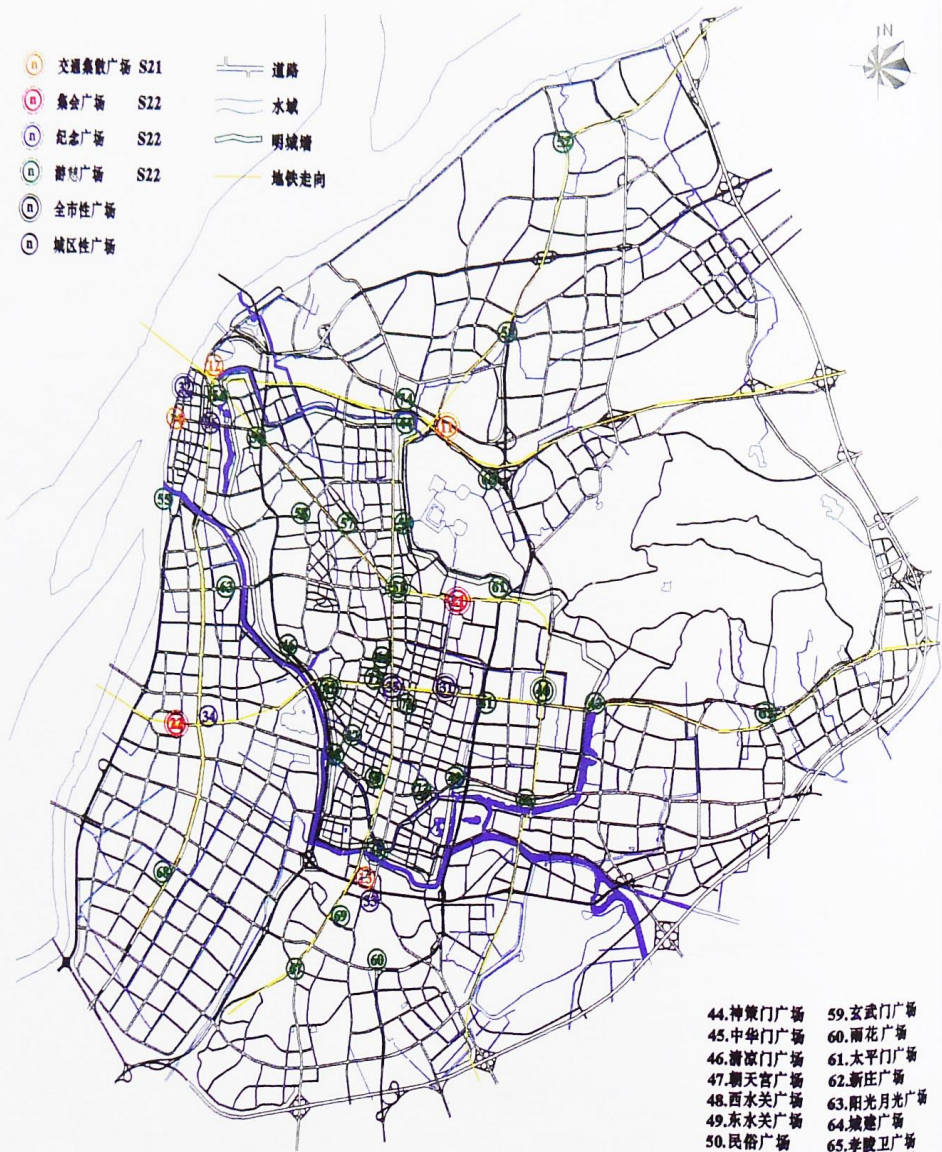




Shanxilu Square, 2007

- 交通集散广场 S21
- 集会广场 S22
- 纪念广场 S22
- 游憩广场 S22
- 全市性广场
- 区域性广场

- 道路
- 水域
- 明城墙
- 地铁走向



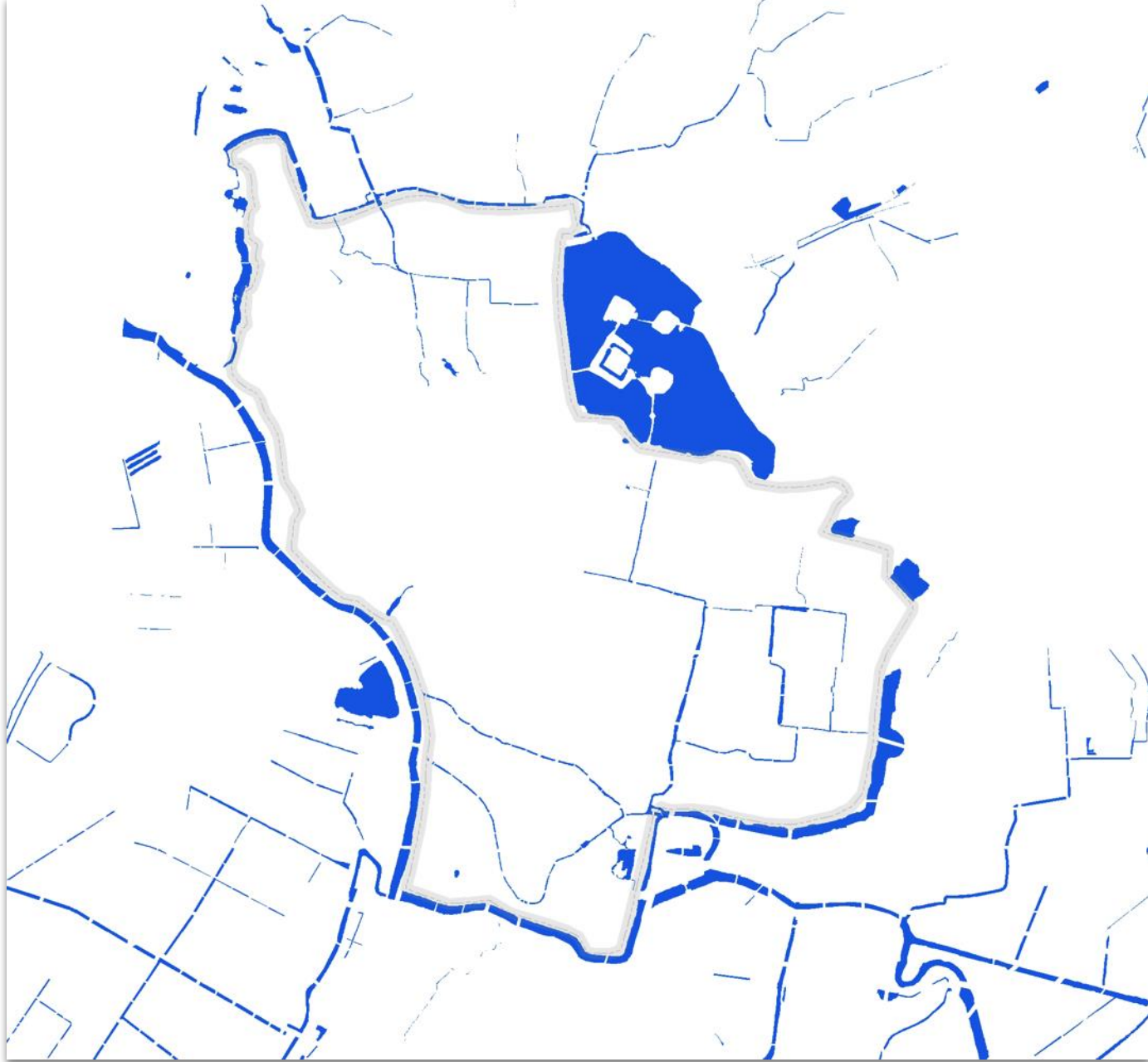
- 11. 火车站广场
- 12. 西站广场
- 13. 南站广场
- 14. 江边广场
- 21. 市政广场
- 22. 河西中心
绿地广场
- 31. 近代史广场
- 32. 晋江纪念广场
- 33. 雨花台北广场
- 34. 江东门广场
- 35. 新街口广场
- 36. 热河路广场



- 40. 明故宫广场
- 41. 西华门广场
- 42. 汉中门广场
- 43. 中山门广场

- 44. 神策门广场
- 45. 中华门广场
- 46. 清凉门广场
- 47. 朝天宫广场
- 48. 西水关广场
- 49. 东水关广场
- 50. 民俗广场
- 51. 鼓楼广场
- 52. 燕子矶广场
- 53. 迈皋桥广场
- 54. 狮子山广场
- 55. 三义河广场
- 56. 盐仓桥广场
- 57. 西渡湾广场
- 58. 新模袍广场
- 59. 玄武门广场
- 60. 雨花广场
- 61. 太平门广场
- 62. 新庄广场
- 63. 阳光月光广场
- 64. 城隍广场
- 65. 孝陵卫广场
- 66. 光华门广场
- 67. 安德门广场
- 68. 沙洲广场
- 69. 天界寺广场
- 71. 正洪街广场
- 72. 乐富来广场
- 73. 夫子庙广场
- 74. 中央门广场

Plazas distribution proposal, 2000



2007



1960s







2000s

On parks

Periods and process

1900s	Scholars' aesthetics legacy and the shifting
1912	Embodiment of nationalism in the capital construction
1937	Desolate and dark fate during the wars
1949	Fluctuating space in the centrally planned system
1980	Space opened to adapt to market economy
2000	

Accessibility



1900s



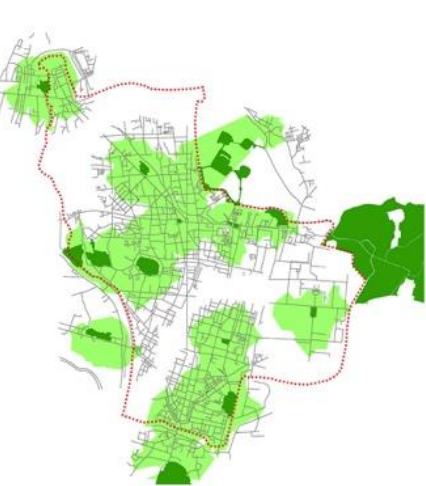
1928



1937



1948



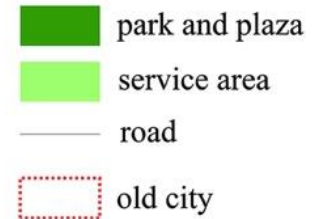
1960s



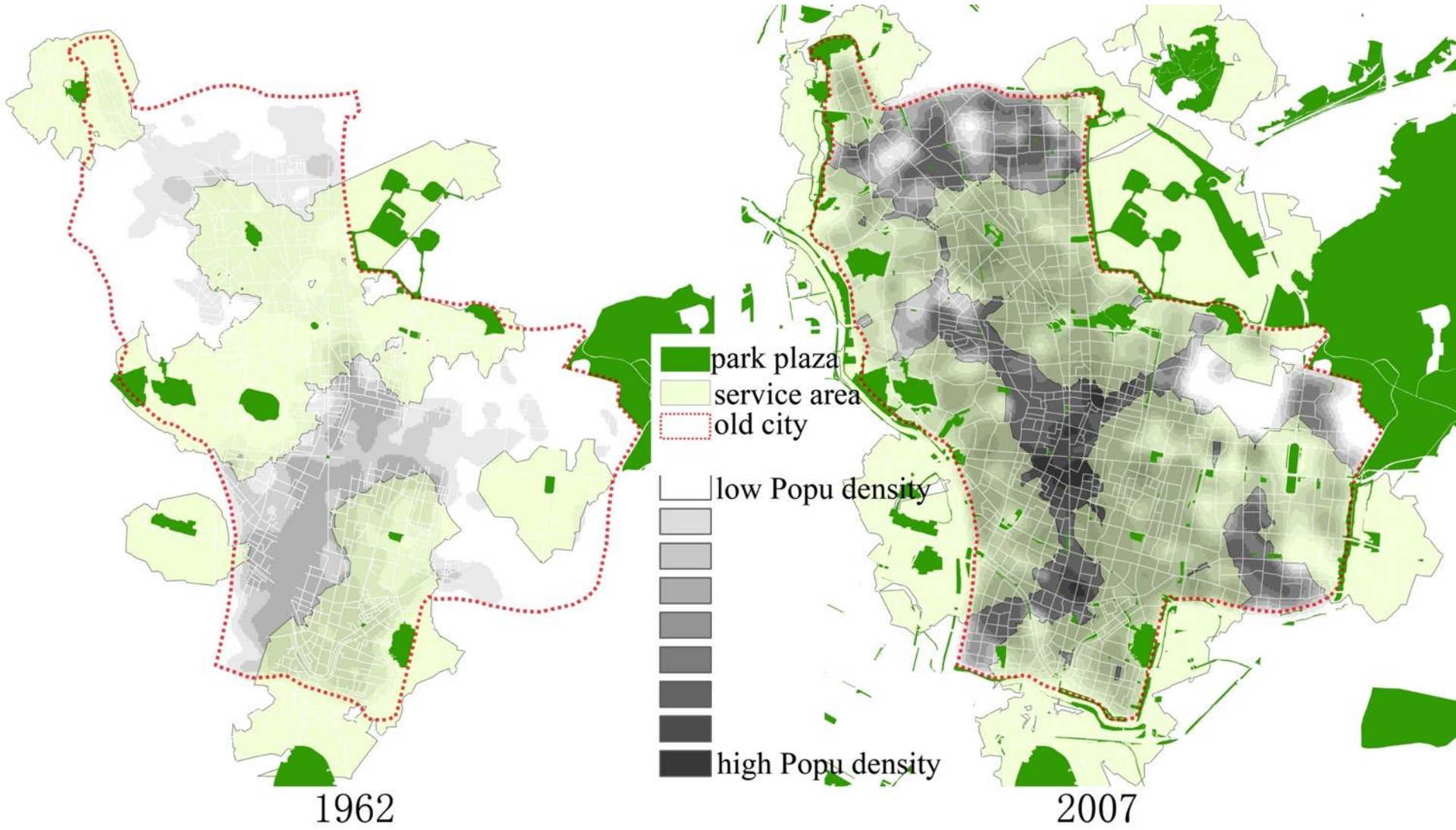
1990s



2000s



spatial equity



On plaza and square



1900s



1930s



1960s



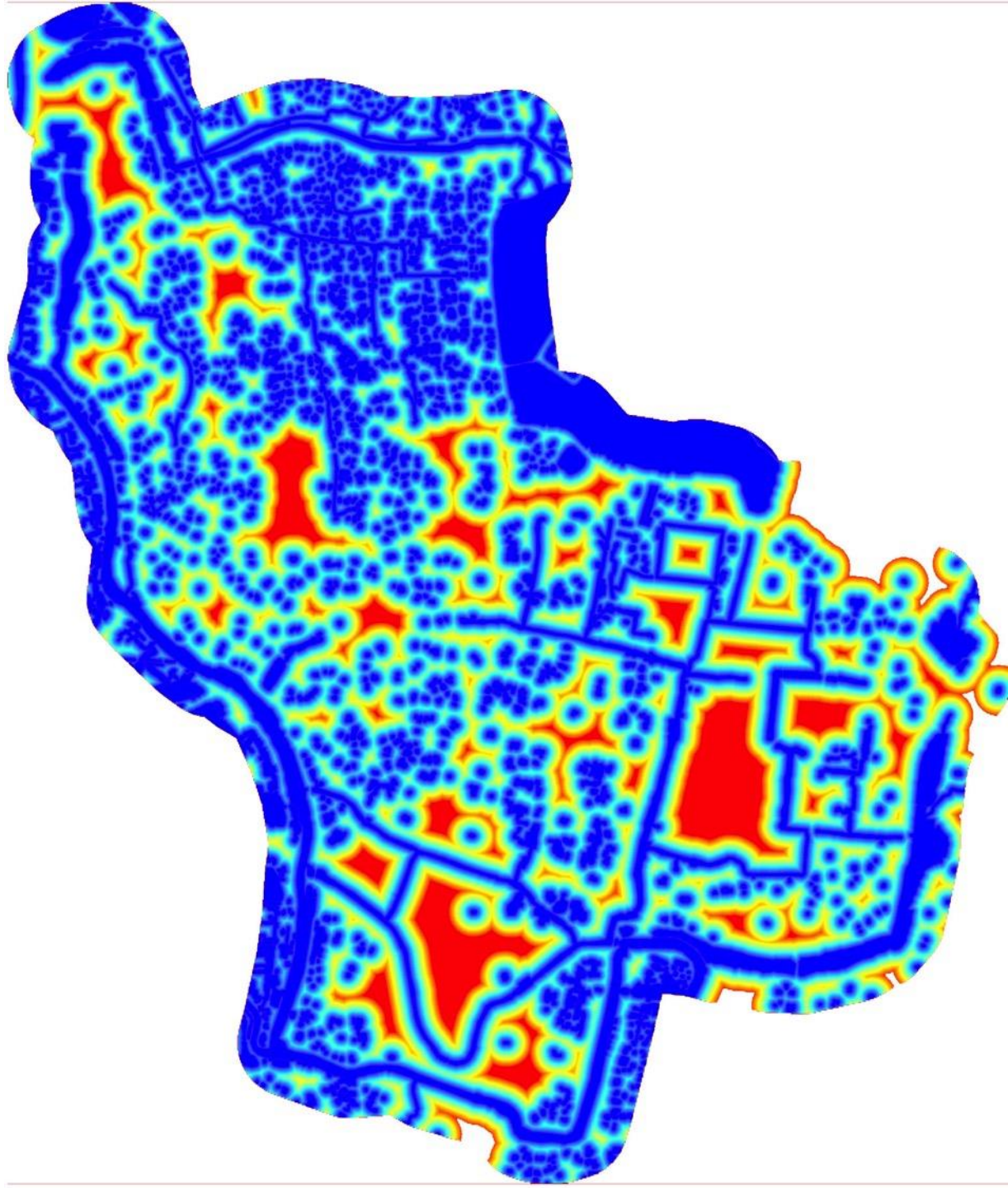
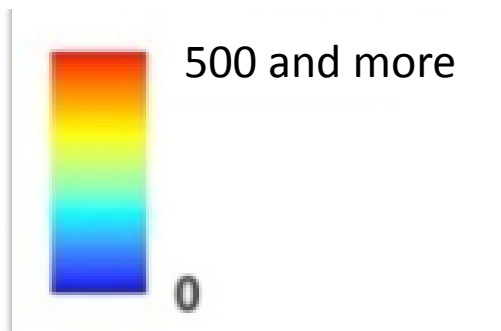
2000s



On water

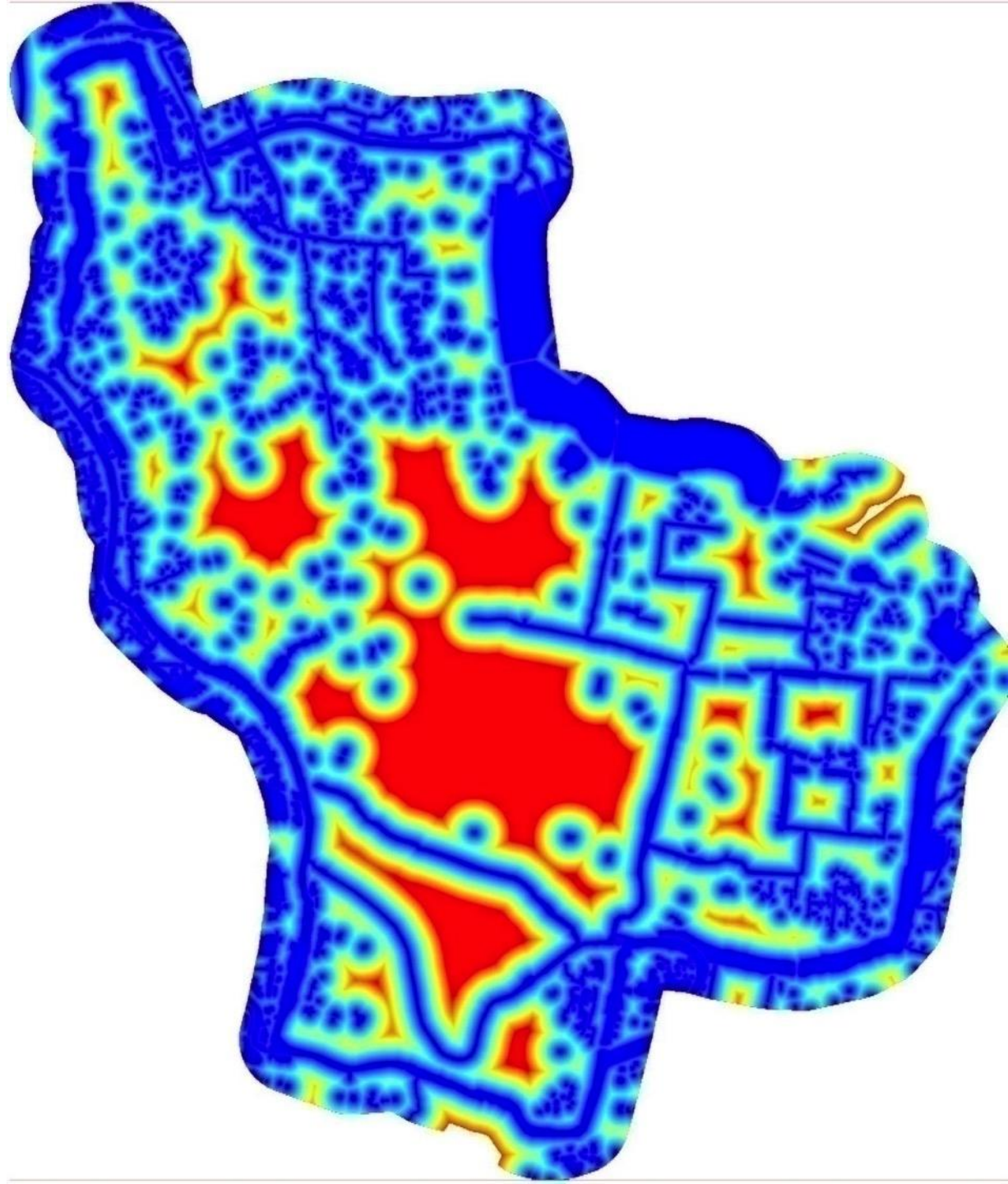
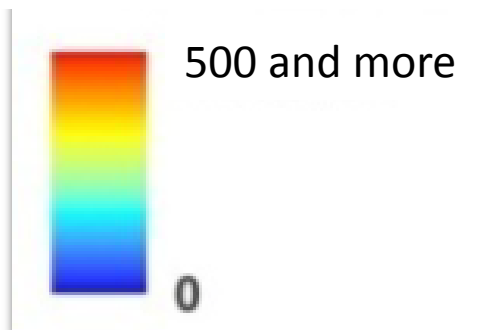
1930s

Distance from water (M)



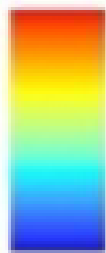
1960s

Distance from water (M)



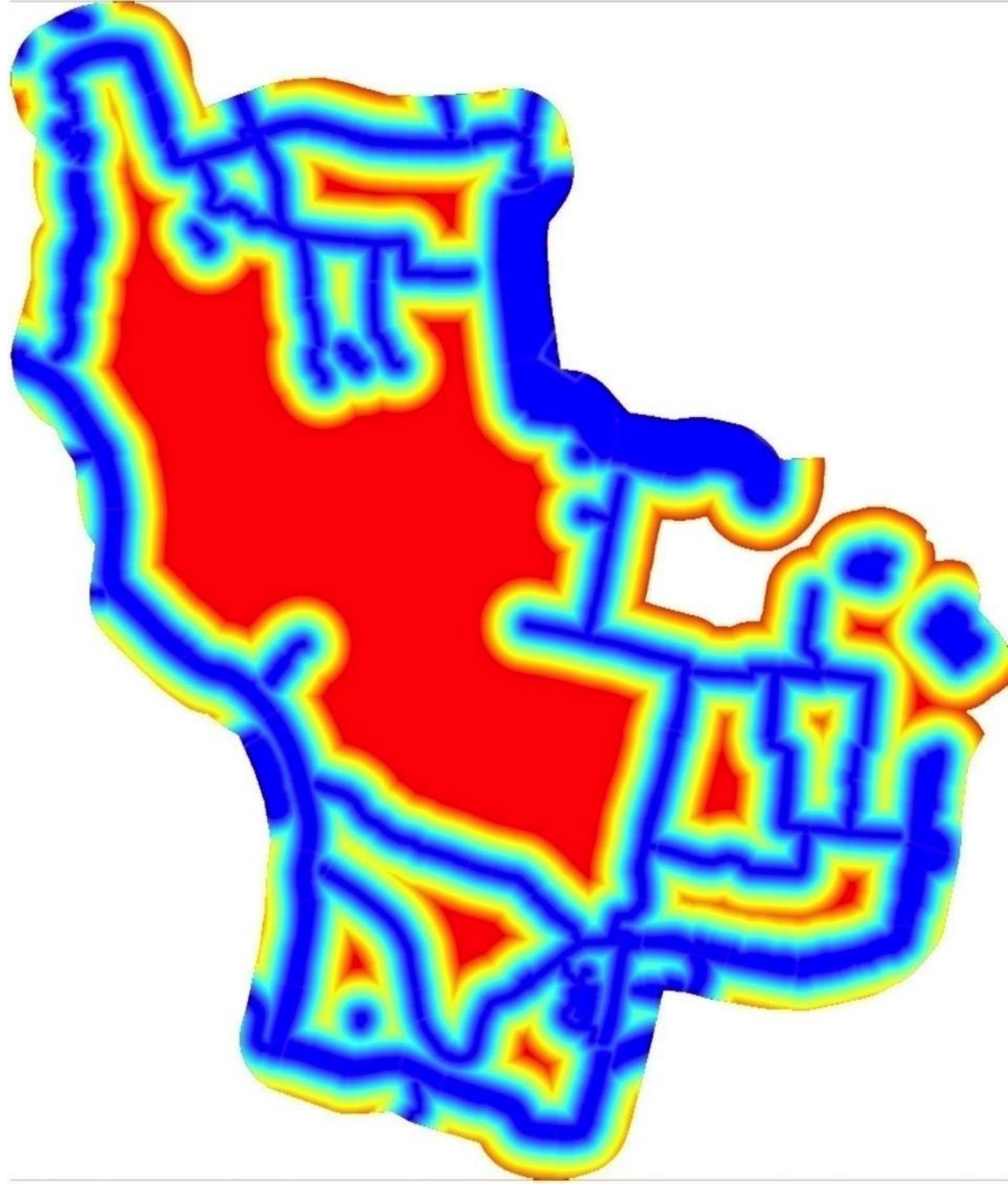
2007

Distance from water (M)



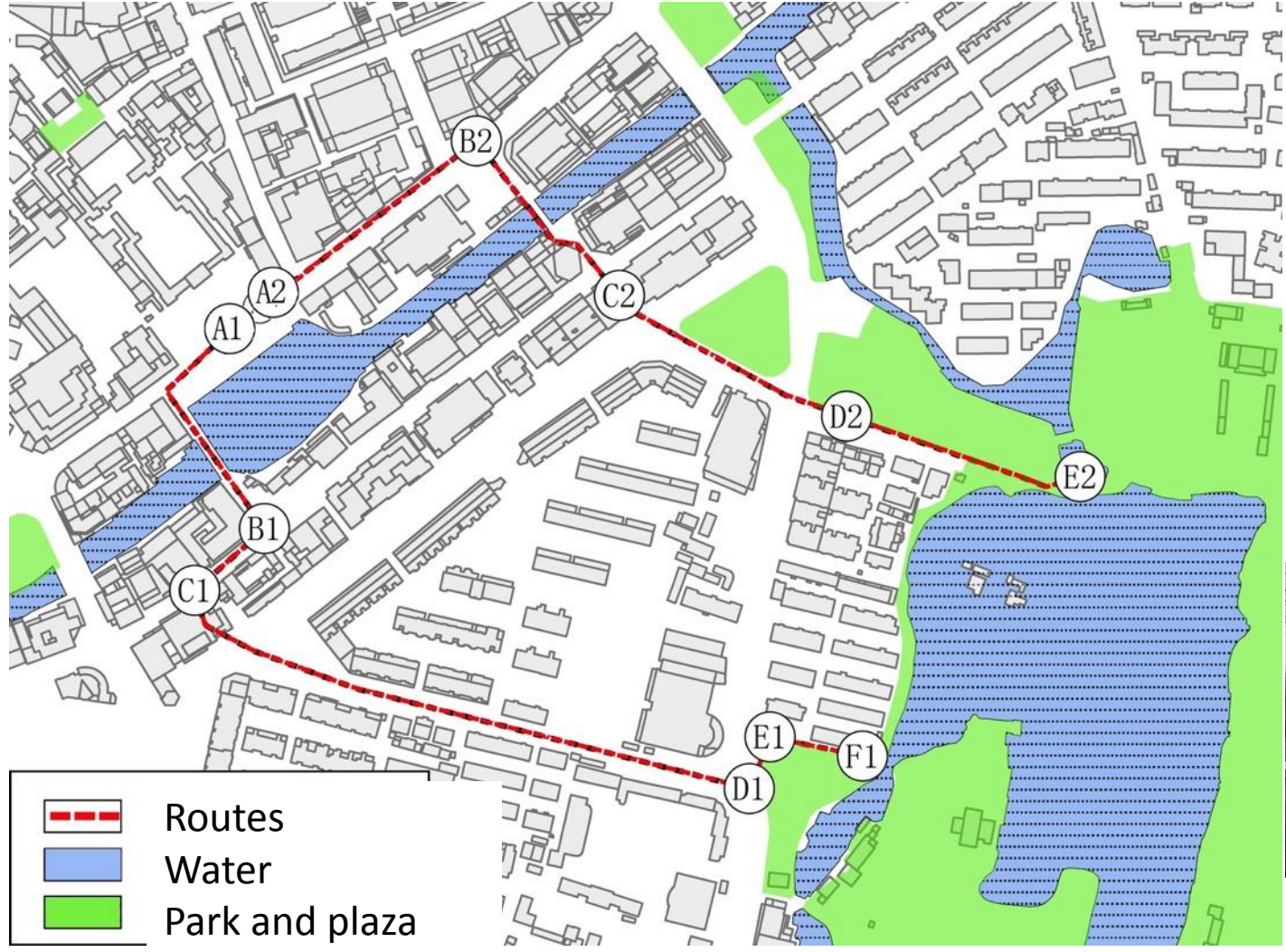
0

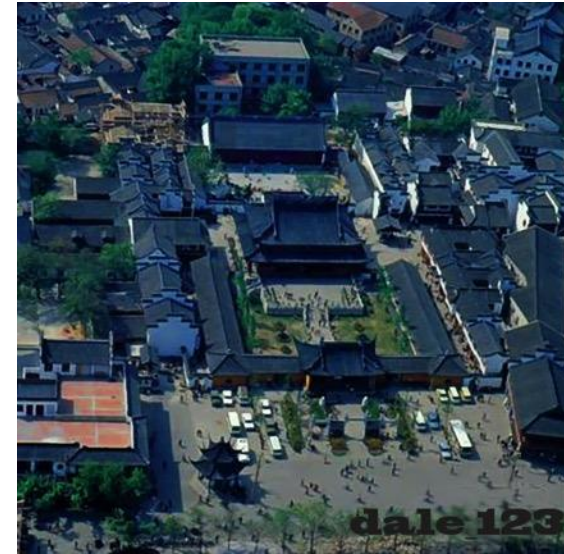
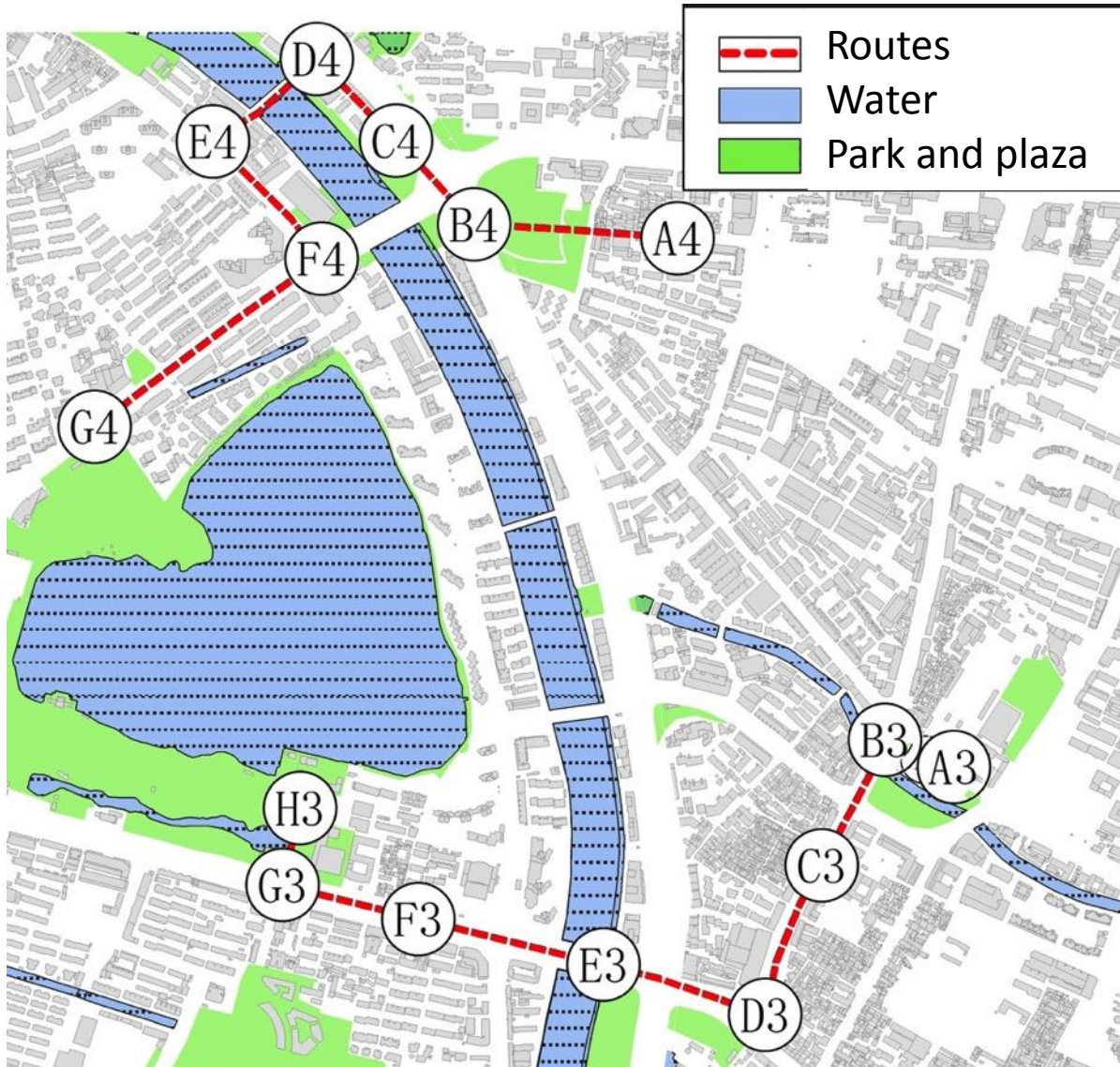
500 and more

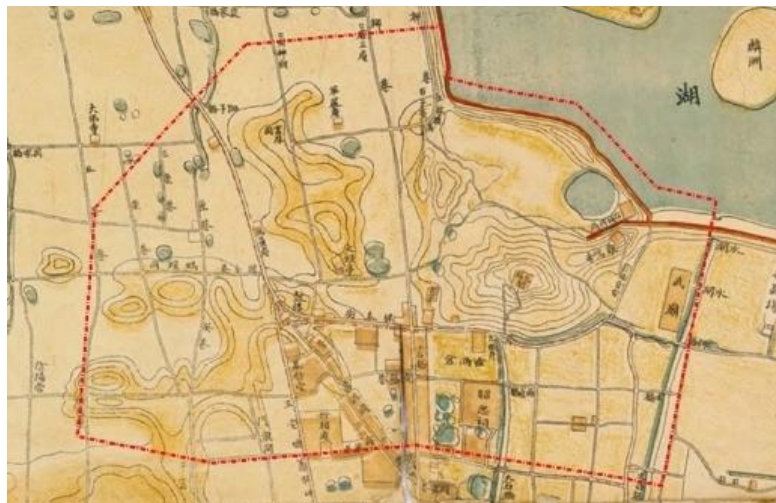


Perception of openness of city

- serial vision







1900s



1930s

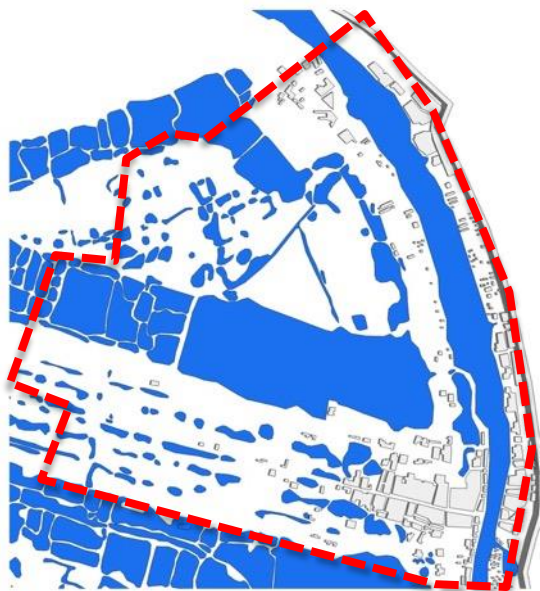


1960s

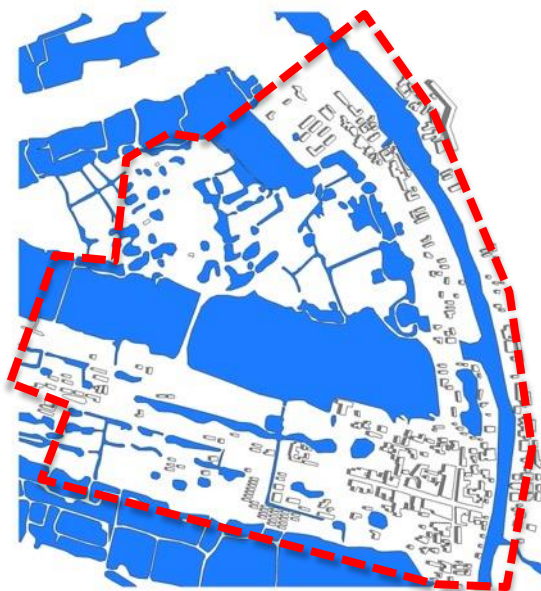


2000s

Micro-climate changes



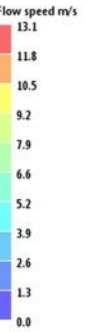
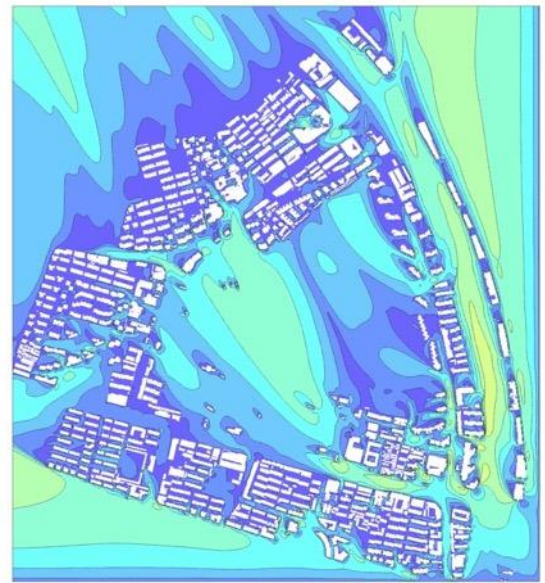
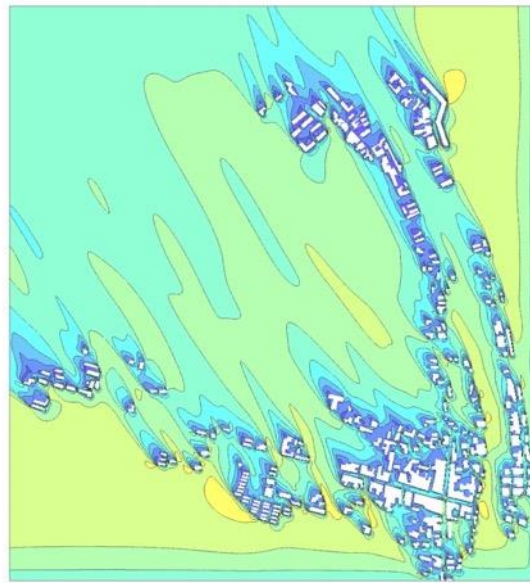
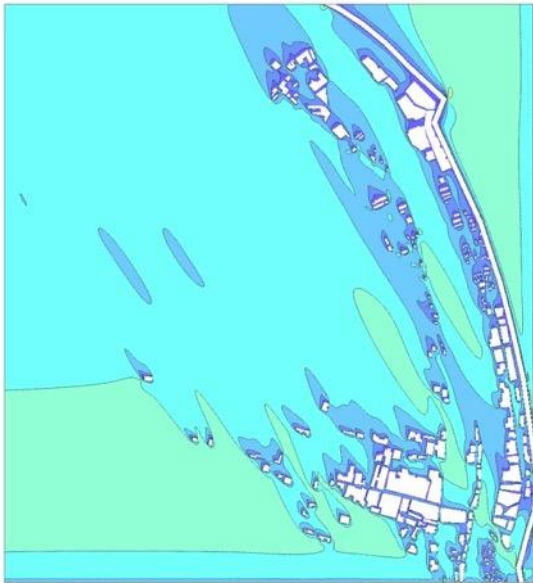
1930



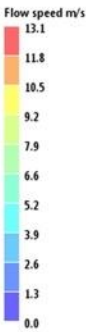
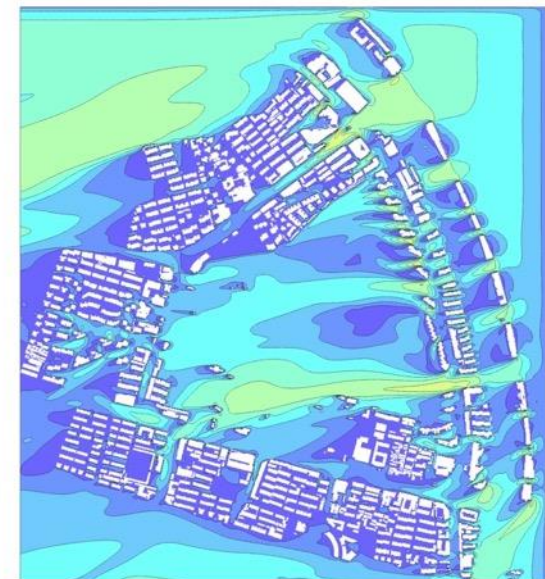
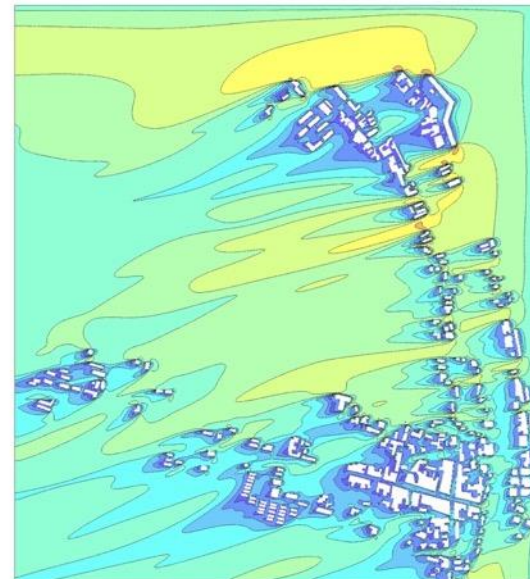
1960



2007



July



January

1930

1960

2007

landscape

風景

風光

wind + view

wind + light



Thank you

xuzhen@njfu.edu.cn